

①


2'10" - 2'20"

Pista de Grama



Overture

A. C. Jobim



fl e picc

Pist

37

fl e picc

Pist

fl e picc

g. acina

Timbales e g. caixa

Pist 3/4

Tubopi

Tabi

Pist. Sala

f

1=3

Handwritten musical score for the first system, featuring multiple staves with various instruments and dynamic markings.

- Staff 1 (Top):** Flute 1 (fl₁) and Flute 2 (fl₂) parts with dynamic markings *ff* and *f*.
- Staff 2:** Clarinet (Cl) and Bassoon (B) parts with dynamic markings *ff* and *f*.
- Staff 3:** Trumpet (T) and Trombone (Tb) parts with dynamic markings *ff* and *f*.
- Staff 4:** Violin (V) and Viola (Vla) parts with dynamic markings *ff* and *f*.
- Staff 5:** Cello (C) and Double Bass (Cb) parts with dynamic markings *ff* and *f*.
- Staff 6:** Piano (P) part with dynamic markings *ff* and *f*.
- Staff 7:** Percussion (Perc) part with dynamic markings *ff* and *f*.
- Staff 8:** Additional part, possibly for a second flute or clarinet.

Handwritten annotations include "1-2 V" with an arrow pointing to a measure, and "Vlas" written above a note in the violin part. The score is heavily annotated with slurs, accents, and dynamic markings.

Handwritten musical score for the second system, primarily focusing on string and percussion parts.

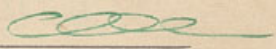
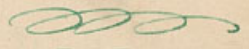
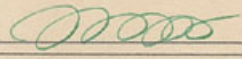
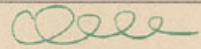
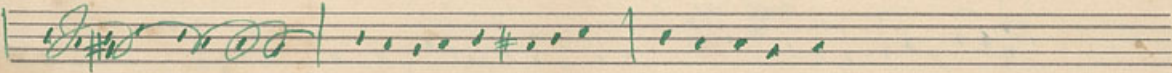
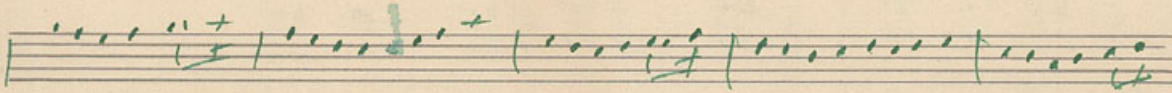
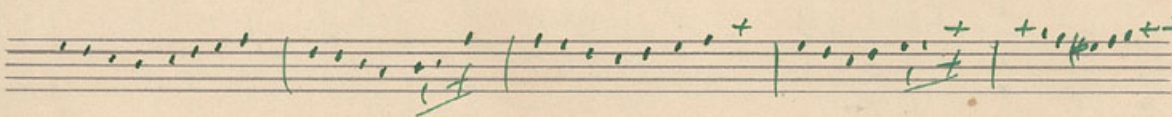
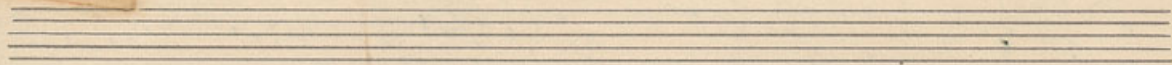
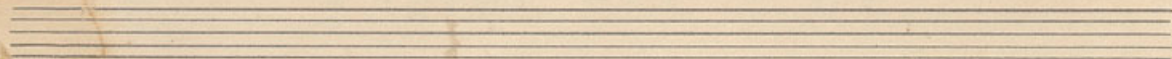
- Staff 1:** Violin (V) part with the instruction "tutti V." and rhythmic markings "6" and "6".
- Staff 2:** Viola (Vla) part with the instruction "Vlas" and rhythmic markings.
- Staff 3:** Cello (C) and Double Bass (Cb) parts with rhythmic markings.
- Staff 4:** Percussion (Perc) part with rhythmic markings.

The score includes various rhythmic notations such as "6" and "6" with arrows, and "tutti V." indicating a change in dynamics or tempo.

Handwritten musical score for the third system, featuring woodwind and percussion parts.

- Staff 1:** Flute (Fl) part with rhythmic markings "++" and "++".
- Staff 2:** Clarinet (Cl) and Bassoon (B) parts with rhythmic markings.
- Staff 3:** Trumpet (T) and Trombone (Tb) parts with rhythmic markings.
- Staff 4:** Percussion (Perc) part with the instruction "Trampa" and rhythmic markings.
- Staff 5:** Additional part, possibly for a second flute or clarinet.

Handwritten annotations include "Trampa" above a note, "Piston" with an arrow, and "2°" and "3°" markings. The score is heavily annotated with slurs and accents.



Tutti ✓

6 6 6

Piston

1-2-3 Trbani

2:3: abasing
Tramp
T: br

Trb e V.C. e Bursa

fl e picc

Ob

Ob e fl 8^a acina

Com picc 16^a

Piston

Matus

Handwritten notes in the bottom right corner, possibly indicating page numbers or other markings.

~~Fl~~ ~~picc~~ ~~8^a~~ ~~acina~~
Fl^{8^a} e picc 8^a acina

2
1

Trombe

C. Barca

tutti *f.* *la*

vlas e cl

v.c. e c.b.

Trampe

v.c. e c.b.

and div

6

6

Tutti V.

Handwritten musical notation for the first staff, showing a sixteenth-note pattern with two groups of six notes bracketed and labeled '6'.

Three measures of a staff with a diagonal slash through each, indicating a rest or a section to be omitted.

Handwritten musical notation for the second staff, featuring a treble clef, a key signature of one sharp (F#), and a series of eighth notes with accents.

Handwritten musical notation for the third staff, featuring a bass clef, a key signature of one sharp (F#), and a series of eighth notes with accents.

Passaggio
C.B.

Handwritten musical notation for the fourth staff, featuring a bass clef, a key signature of one sharp (F#), and a series of eighth notes with accents, including a triplet of notes.

Handwritten musical notation at the bottom left, showing a series of notes with a key signature of one sharp (F#) and a common time signature (C).