

23

Pista e Gramma

23

Cor 2

Obol 2

1-2 fl 2

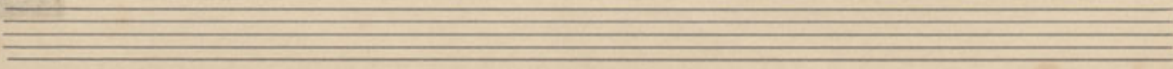
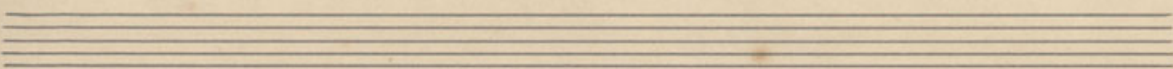
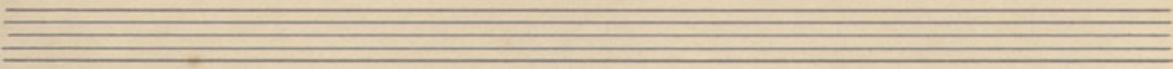
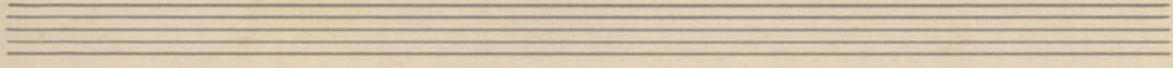
1-2 2

V.
3-4 2

Vla 2

Cell 2

Basso 3



23

Pista de Grama

23

23

○

Handwritten musical score for the first system. It consists of three staves. The top staff is a treble clef with a key signature of two sharps (F# and C#) and a 2/4 time signature. It begins with a section marked 'A'. The middle staff is labeled 'V. cl+Vln.' and contains notes with 'Pizz' (pizzicato) and 'sempre' markings. The bottom staff is labeled 'V.C.' and contains a bass line with various rhythmic notations and accents.

Handwritten musical score for the second system, consisting of three staves. The top staff continues the melodic line. The middle staff has 'Pizz' markings. The bottom staff has 'Pizz' markings and a 'D.C. al fine' instruction. The system concludes with a double bar line and repeat dots.

Handwritten musical score for the third system, consisting of three staves. The top staff continues the melodic line. The middle staff has 'Pizz' markings. The bottom staff has 'Pizz' markings and a 'D.C. al fine' instruction. The system concludes with a double bar line and repeat dots.

Four empty musical staves at the bottom of the page, with a small green scribble on the first staff.

B
Trampa

Handwritten musical notation for the first staff, featuring a treble clef, a 4/4 time signature, and a key signature of one flat. The notation consists of several measures of rhythmic patterns, primarily eighth and sixteenth notes.

Oboe

Handwritten musical notation for the second staff, featuring a treble clef and a key signature of one flat. The notation includes various rhythmic values and rests.

Trampa

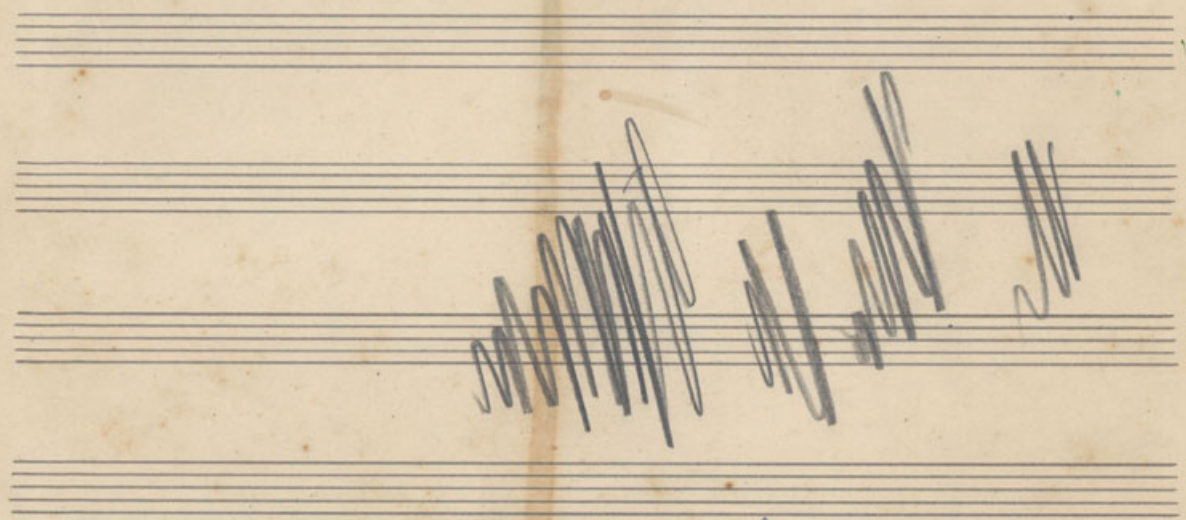
Handwritten musical notation for the third staff, featuring a bass clef and a key signature of one flat. It includes notes and rests, with some markings above the staff.

Oboe

Handwritten musical notation for the fourth staff, featuring a treble clef and a key signature of one flat. The notation includes notes, rests, and some accidentals.

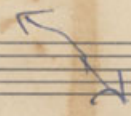
Trampa Ob Trampa

Handwritten musical notation for the fifth staff, featuring a bass clef and a key signature of one flat. It includes notes and rests, with labels 'Trampa', 'Ob', and 'Trampa' above the staff.



Una

Sicura



Aristides Spindola
49 apt 101

23

Pista de Gramma 1'20"

Artista Carlos J. L.

Oboe

(from rec'd)

cl (from rec'd)

Harp

1-2 V.

3-4 V.

Pizz

Vla

Celli

Pizz

Basso

Pizz

Ob^o $\frac{1}{2}$

Trmpⁿ $\frac{3}{4}$

cl $\frac{1}{2}$

Flarp $\frac{1}{2}$

1-2 $\frac{1}{2}$

V. $\frac{3-4}{4}$

Viol^o $\frac{1}{2}$

cell $\frac{1}{2}$

Bass $\frac{1}{2}$

Oboe

Tampana

Copiar uma 4ª abaixo

Cl

Harp

1-2 V.

3-4

Viol

Cell

Basso

Oboe

Trp

Cl

Harp

1-2 V. 3-4

Bas

Cell

Basso

Ob²

Tr¹

D

Harp

1-2 V.

V.

3-4 V.

Clar

cell

Basso



Rep. Ad Lib.

Ob

Trampa

d

Harp

1-2 V.

3-4 V.

Vcllo

cell

Basso

Rep

Fi

Fi