

95 Bars Scored

(CLAUS) WHICH OF THE RHYTHM, HAS THE SOLO'S

# BATIDINHA

**A.C. JOBIM**

Arr by **CLAUS OGERMAN**

**WEDO'S MUSIC WRITING SERVICE**

218 West 49th Street  
New York, N. Y. 10019 Circle 5-2150-1

"BATIDINHA"

Arr. by C. OGERMAN

(A)

3 Fl.

Handwritten musical notation for 3 Flutes, including a treble clef, a key signature of one flat, and a 4/4 time signature. The first measure contains a whole note chord with a downward arrow below it.

~~T.B.~~

Handwritten musical notation for Trombone, including a treble clef, a key signature of one flat, and a 4/4 time signature. The first measure contains a whole note chord with a downward arrow below it.

Colins (2)

Handwritten musical notation for Collins, including a treble clef, a key signature of one flat, and a 4/4 time signature. The first measure contains a whole note chord with a downward arrow below it.

Celli (4)

Handwritten musical notation for Celli, including a treble clef, a key signature of one flat, and a 4/4 time signature. The first measure contains a whole note chord with a downward arrow below it.

OND/R  
Bass-Th  
Guitar

(Solo) Insert CHORDS + RAS LINE ON Rhythmic

Handwritten musical notation for Guitar, including a treble clef, a key signature of one flat, and a 4/4 time signature. The first measure contains a whole note chord with a downward arrow below it. A circled 'A1' is written below the first measure.

Piano

Handwritten musical notation for Piano, including a treble clef, a key signature of one flat, and a 4/4 time signature. The first measure contains a whole note chord with a downward arrow below it. Chords are written below the staff: E MA 9/7, Eb MA 7 (+9), Eb 7 +9, E MA 9/7, C# MA 7 +9, and C# 7 +9.

Bass

Handwritten musical notation for Bass, including a bass clef and a 4/4 time signature. The first measure contains a whole note chord with a downward arrow below it. Dynamics markings include p, bp, and pp.

Drums


Handwritten musical notation for Drums, including a 4/4 time signature. The first measure contains a whole note chord with a downward arrow below it. A note with an arrow pointing right is written below the staff.

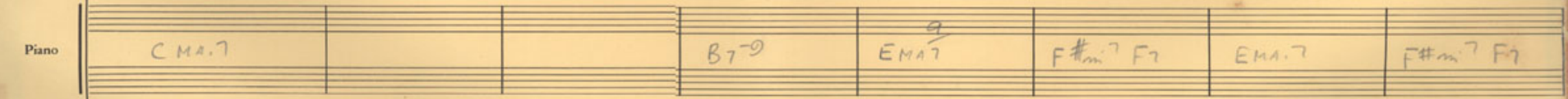
8

Fl. 

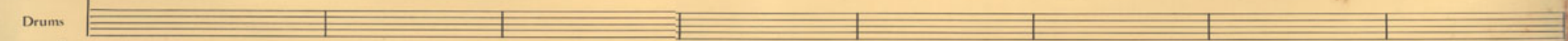
Tb. 

Spr. 

Guitar 

Piano 

Bass 

Drums 

(C)

Handwritten musical score for a jazz ensemble. The score is arranged in a vertical stack of staves, with the following parts from top to bottom:

- Flute (Fl.)**: A set of three staves, currently empty.
- Trumpet (Tr.)**: A set of three staves, currently empty.
- Saxophone (Sax.)**: A set of three staves. The top staff contains a melodic line with notes and slurs, starting with a circled 'C' and a '5' above it. The middle and bottom staves are empty.
- Guitar**: A single staff, currently empty.
- Piano**: A single staff containing a chord progression:  $E_{MA} 7$ ,  $E^b_{MA} 7$ ,  $E^b 7^+9$ ,  $E_{MA} \frac{9}{7}$ ,  $C\#m 7^+9$ , and  $C\# 7^+9$ . There are also some handwritten notes and a circled 'C' above the first measure.
- Bass**: A single staff containing rhythmic notation, including notes and rests, with some handwritten markings like 'bp' and '4p'.
- Drums**: A set of three staves, currently empty.

Additional annotations include a circled 'C' at the top left, a circled 'C' above the first measure of the Piano staff, and a circled '5' above the first measure of the Saxophone staff. A large arrow points from the circled '5' in the Saxophone staff down to the circled 'C' in the Piano staff.

D

Handwritten musical score for a band. The score is written on ten staves, with the following instruments labeled on the left:

- Fl. (Flute)
- TB. (Trumpet)
- Str. (String)
- Guitar
- Piano
- Bass
- Drums

The score is in 4/4 time. The key signature has one sharp (F#). The music is written in a common staff with a treble clef. The notes are mostly quarter and eighth notes, with some rests. There are several slurs and accents throughout the piece.

Handwritten annotations include:

- col Vlns* (Violins) and *D1* (Double Bass) written above the first staff.
- CMA.7* (C Major 7) written below the first staff.
- Geo. Add. Cello* (George's Additional Cello) written below the string staff.
- Chord symbols: *C+*, *F#m.7*, *B7-9*, *Em.7*, *F#7*, *F#m.*, and *B7-9* are written below the piano staff.
- Dynamic markings: *sfz* (sforzando) and *div.* (divisi) are present.

The score is divided into measures by vertical bar lines. The first staff (Flute) has a long slur over the first four measures. The string staff has a long slur over the first six measures. The piano staff has a long slur over the first six measures. The bass staff has a long slur over the first four measures.

C.F. (E)

R.

T.B.

S.H.

Guitar

Piano

Bass

Drums

(E)

celli

E MA7

E<sup>b</sup> +5

E MA7

C#m7 +9

C#7 +9

p p x. bp qp bp b2 qp qp z. d p d #p

F

Fl.

TB.

Str.

Guitar

Piano

Bass

Drums

Cells  
2x only  
2x only

colpings  
F11

F#m(MA.7) F#m7 Ami(MA.7) Am6 G#m7 G13 F#m7 F13 E MA.7/7 F#m7F7

G

FR.

TR.

G.

Str.

Guitar

GTR (solo)

A1

A2

A3

A4

A5

A6

A7

A8

Piano

Bass

Drums



(H)

TR.

TR.

(H)

Str.

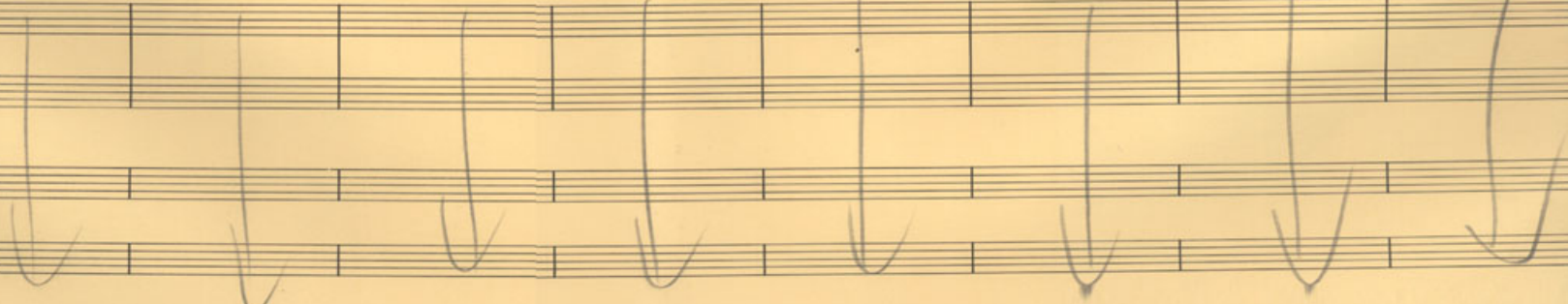
Guitar

Piano

Bass

Drums

B1
B2
B3
B4
B5
B6
B7
B8



Geo  
Add FLUTES

23

Fl.

TB.

Sh.

Guitar

Piano

Bass

Drums

D. S. al  $\text{ff}$   
to Cobu

~~ff~~

(K)

FE.

TR.

(K)

Str.

Guitar

Piano

Bass

Drums

① Coda

79

Fl.

TR.

CODA

Str.

Guitar   
 F#m7 F7 Ema:9   
 VINS

Piano

Bass

Drums

M

R.

T.B.

M.

SW

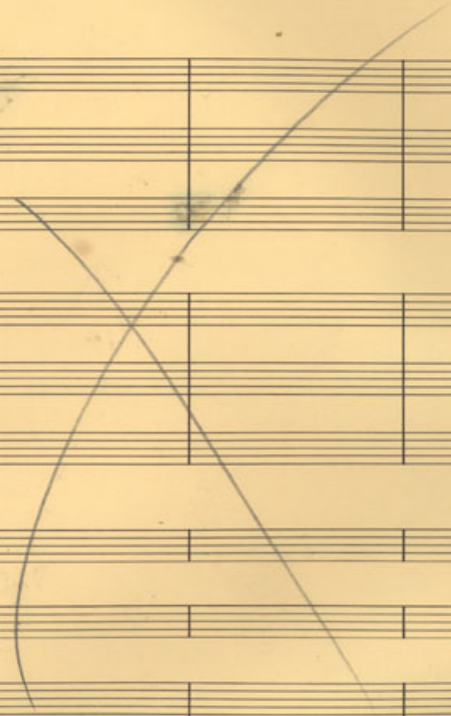
Guitar

Piano

Bass

Drums

fade



Musical score for multiple instruments. The score is divided into two systems by a double bar line. The first system contains handwritten notes and chords for several instruments. The second system is mostly empty, with a large 'X' drawn over it.

**First System:**

- SW (Saxophone/Wind):** Notes include  $\sharp C$ ,  $C$ ,  $\sharp D$ ,  $D$ ,  $\sharp E$ ,  $E$ ,  $F$ ,  $F$ ,  $G$ ,  $G$ ,  $A$ ,  $A$ ,  $B$ ,  $B$ ,  $C$ .
- Guitar:** Chords  $F\sharp m7$  and  $F7$  are written above the staff.
- Piano:** Notes include  $\sharp C$ ,  $C$ ,  $\sharp D$ ,  $D$ ,  $\sharp E$ ,  $E$ ,  $F$ ,  $F$ ,  $G$ ,  $G$ ,  $A$ ,  $A$ ,  $B$ ,  $B$ ,  $C$ .
- Bass:** Notes include  $C$ ,  $C$ ,  $D$ ,  $D$ ,  $E$ ,  $E$ ,  $F$ ,  $F$ ,  $G$ ,  $G$ ,  $A$ ,  $A$ ,  $B$ ,  $B$ ,  $C$ .

**Second System:** Empty staves with a large 'X' drawn across them.