

1. Flauta

que é que a baiana tem?

Samba

Handwritten musical score for Flute 1, measures 1-4. The score is in 2/4 time with a key signature of two flats. It features various musical notations including notes, rests, and dynamic markings like 'p' and 'p p'. Measure 1 starts with a circled '1'. Measure 2 has a circled '2' and a 'p' marking. Measure 3 has a circled '3' and a 'p p Só na Reb.' marking. Measure 4 has a circled '4' and a '2' marking. Below the main staff, there are two additional staves: the first contains a '2' and a circled '1', and the second contains a circled '1'.

Ad lib.

2. 4. Flautas. O que é que a baiana tem? Samba.

Ad lib.

3. Flauta. ⑥ que é que a baiana tem? Samba.

Musical staff with treble clef, key signature of two flats (Bb, Eb), and 2/4 time signature. The staff contains a whole rest followed by a measure with a quarter note F, a quarter note F with a dot, an eighth note G, and an eighth note A. This is followed by a measure with a quarter note G and a quarter note F, and a final measure with a whole rest. A circled '4' is written above the first measure.

Musical staff with treble clef, key signature of two flats, and 2/4 time signature. It contains a measure with a quarter note F, a quarter note F with a dot, an eighth note G, and an eighth note A. This is followed by a measure with a quarter note G and a quarter note F, and a final measure with a whole rest. A circled '1' is written to the left of the first measure.

Musical staff with treble clef, key signature of two flats, and 2/4 time signature. It contains a measure with a quarter note F, a quarter note F with a dot, an eighth note G, and an eighth note A. This is followed by a measure with a quarter note G and a quarter note F, and a final measure with a whole rest. A circled '2' is written above the first measure. The text "p Só' na Rep." is written below the staff.

Musical staff with treble clef, key signature of two flats, and 2/4 time signature. It contains a measure with a quarter note F, a quarter note F with a dot, an eighth note G, and an eighth note A. This is followed by a measure with a quarter note G and a quarter note F, and a final measure with a whole rest. A circled '3' is written to the left of the first measure.

Musical staff with treble clef, key signature of two flats, and 2/4 time signature. It contains a measure with a quarter note F, a quarter note F with a dot, an eighth note G, and an eighth note A. This is followed by a measure with a quarter note G and a quarter note F, and a final measure with a whole rest. A circled '4' is written above the first measure. There are some scribbles and a circled '2' in the second measure.

Musical staff with treble clef, key signature of two flats, and 2/4 time signature. It contains a measure with a quarter note F, a quarter note F with a dot, an eighth note G, and an eighth note A. This is followed by a measure with a quarter note G and a quarter note F, and a final measure with a whole rest. A circled '1' is written to the right of the final measure.

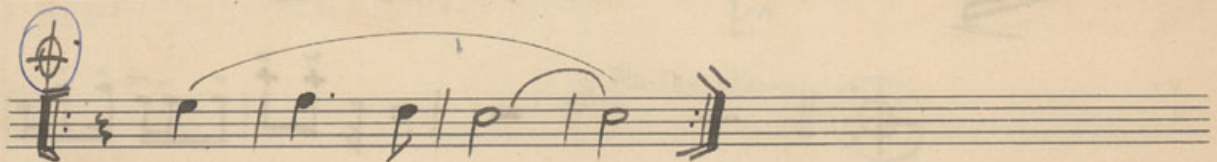
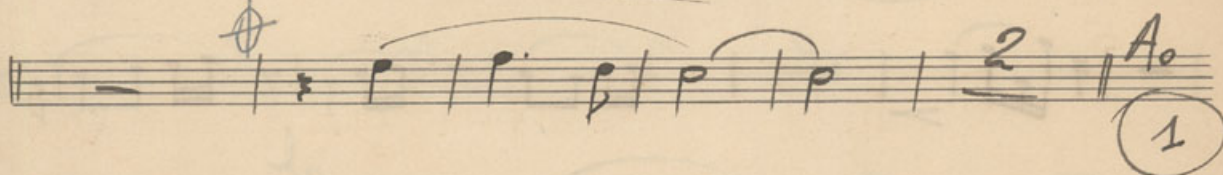
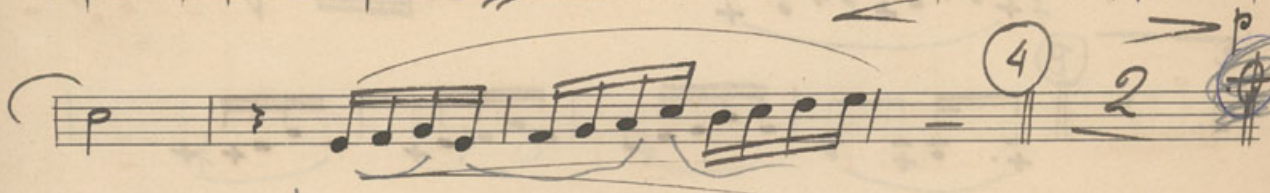
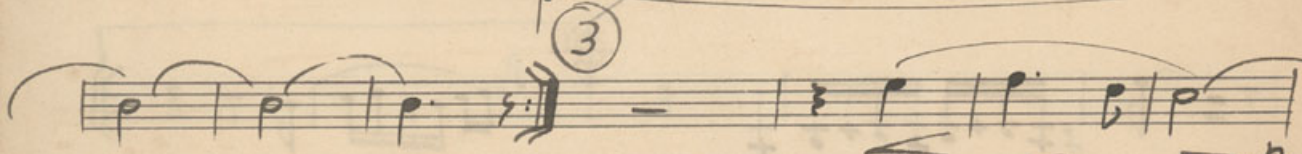
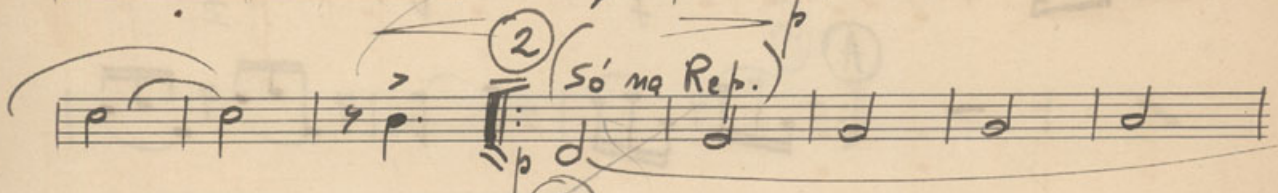
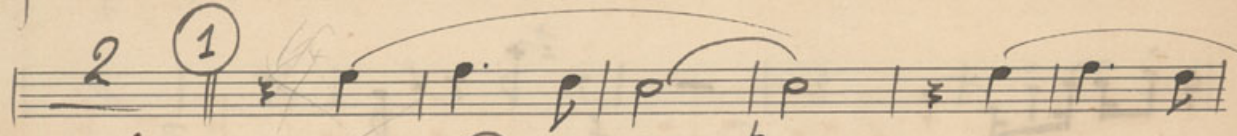
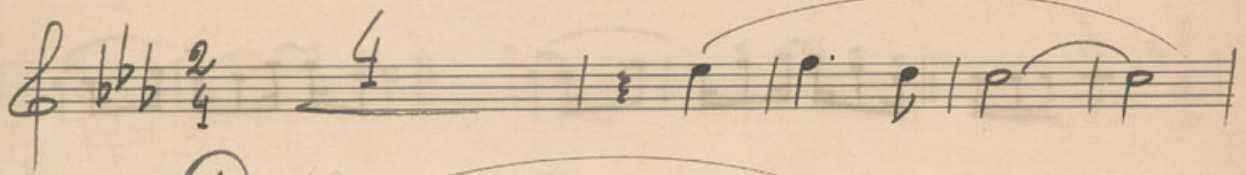
Musical staff with treble clef, key signature of two flats, and 2/4 time signature. It contains a measure with a quarter note F, a quarter note F with a dot, an eighth note G, and an eighth note A. This is followed by a measure with a quarter note G and a quarter note F, and a final measure with a whole rest. A circled '1' is written above the first measure.

Ad lib.

5. Flauta.

O que é que a baiana tem?

Samba.



Ad lib.

⑥ que é que a baiana tem?

Samba.

1.
3.
Clarinetta.

Ad lib.

2. Clarineta. 6 que é que a baiana tem? Samba.

Handwritten musical score for Clarinet in 2/4 time, titled "que é que a baiana tem? Samba". The score consists of six staves. The first staff is the treble clef melody. The second staff shows a bass clef accompaniment with a circled "1" above the first measure. The third staff continues the melody with a circled "2" above the first measure. The fourth staff continues the melody. The fifth staff shows a bass clef accompaniment with a circled "3" above the first measure and a "5" below the first measure. The sixth staff shows a bass clef accompaniment with a circled "4" above the first measure and a "2" below the first measure. The seventh staff continues the melody with a circled "1" above the first measure. The eighth staff shows a bass clef accompaniment with a circled "1" above the first measure and a "2" below the first measure. The score ends with a double bar line and a circled "1" above the final measure.

Ad lib. ...

Arone. *que é que a baiana tem?* Samba.

Handwritten musical notation for the first system of the piece. It consists of two staves. The top staff is in treble clef with a key signature of one flat (Bb) and a 2/4 time signature. It contains four measures of music, primarily eighth and sixteenth notes. The bottom staff is in bass clef and contains five measures of music, mostly consisting of chords and rests. A circled number '1' is written above the second measure of the bottom staff.

Handwritten musical notation for the second system. It consists of two staves. The top staff is in treble clef and contains four measures of music with eighth and sixteenth notes. The bottom staff is in bass clef and contains four measures of music, mostly chords and rests. A circled number '2' is written above the first measure of the top staff.

Handwritten musical notation for the third system. It consists of two staves. The top staff is in treble clef and contains four measures of music with eighth and sixteenth notes. The bottom staff is in bass clef and contains four measures of music, mostly chords and rests.

Handwritten musical notation for the fourth system. It consists of two staves. The top staff is in treble clef and contains four measures of music, including a triplet of eighth notes and a five-measure rest. The bottom staff is in bass clef and contains four measures of music, including a circled number '4', a '2', a circled number '3', and a '3'. A circled number '3' is also written above the first measure of the top staff.

Handwritten musical notation for the fifth system. It consists of two staves. The top staff is in treble clef and contains four measures of music, ending with a double bar line and a circled number '1'. The bottom staff is in bass clef and contains four measures of music, mostly chords and rests.

Handwritten musical notation for the sixth system. It consists of two staves. The top staff is in treble clef and contains four measures of music, starting with a circled number '2'. The bottom staff is in bass clef and contains four measures of music, mostly chords and rests.

Ad lib.

GUITARRA. ① que é que a baiana tem? Samba.

Musical notation for guitar, including chords (E^{b6}, B^{b9}, B^{b7}, E^{b6}, B^{b9}, E^{b6}, B^{b7}, E^{b6}, B^{b9}, A₀) and circled numbers (1, 2, 3, 4) indicating fingerings or measures.

Musical notation for guitar, including chords (E^{b6}, B^{b9}) and a circled symbol.

Ad lib.

Baixo ^① que é que a baiana tem? Samba

Handwritten musical notation on a single staff, starting with a bass clef, a key signature of two flats (B-flat and E-flat), and a 2/4 time signature. The notation consists of six measures of music, each containing a quarter note followed by a dotted quarter note, with a double bar line at the end.

Handwritten musical notation on a single staff, continuing from the previous staff. It features a circled '1' at the beginning and a circled '2' above the fifth measure. The notation includes quarter notes, dotted quarter notes, and some notes with stems that are crossed out.

Handwritten musical notation on a single staff, continuing the piece. It includes a circled '3' above the fourth measure. The notation consists of quarter notes and dotted quarter notes.

Handwritten musical notation on a single staff, continuing the piece. It includes a circled '4' above the first measure. There are some blue ink scribbles over the notation in the third and fourth measures.

Handwritten musical notation on a single staff, continuing the piece. It ends with a circled '1' above the final measure, which contains a whole note.

Handwritten musical notation on a single staff, continuing the piece. It begins with a circled treble clef and contains four measures of music, ending with a double bar line.

Ad lib.

que é que a baiana tem?

Ritmo.

Samba.

Handwritten musical notation for a samba rhythm, consisting of three staves. The first staff is a bass clef with a 2/4 time signature, showing a 2-measure rest, a 10-measure rest, and an 8-measure rest, with a circled '1' above the 8-measure rest. The second staff is a treble clef with a 2/4 time signature, starting with a quarter note, followed by a circled '2' above a 2-measure rest, the word "seque" written above the staff, an 8-measure rest, a circled '3' above a 2-measure rest, and another 8-measure rest. The third staff is a bass clef with a circled '4' at the beginning, a 2-measure rest, a circled '5' above a 2-measure rest, a 7-measure rest, and a circled '1' above the final measure which contains the letter "A".

Handwritten musical notation on a single staff. It starts with a circled '6' above a treble clef, followed by a 4-measure rest, and ends with a double bar line.

Ad lib.