

Samba

"Na barra chegou"

Handwritten musical notation for the Samba piece "Na barra chegou". The notation is written on four staves in treble clef with a 2/4 time signature. The melody consists of eighth and sixteenth notes, with some beamed eighth notes and a final double bar line.

Samba canção - "Nem eu"

Handwritten musical notation for the Samba canção "Nem eu". The notation is written on one staff in treble clef with a 2/4 time signature. The melody consists of eighth notes, followed by a quarter note, a half note, and a final double bar line.

Samba canção "Não tem solução"

Handwritten musical notation for the Samba canção "Não tem solução". The notation is written on one staff in treble clef with a 2/4 time signature and a key signature of one flat. The melody consists of eighth notes, followed by a quarter note, a half note, and a final double bar line.

Samba - "Moinho da Baía"



Samba - "Qual é o bicho"

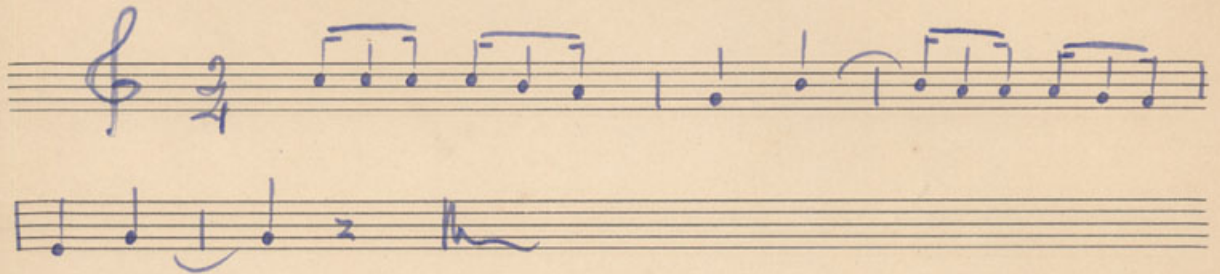


Samba "Seudades da Baía"



Samba

"Quem vem p'ta beita do mar"



~~Marcha "Marinheiro chora"~~



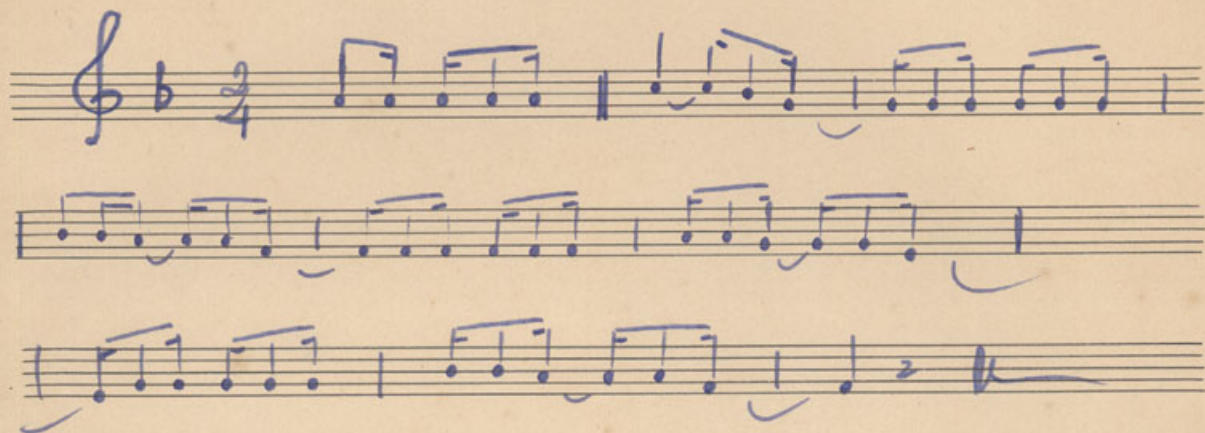
Samba "Vou-me embora p'ro sertão"

Handwritten musical notation for the Samba "Vou-me embora p'ro sertão". The score is written on five staves. The first staff begins with a treble clef, a key signature of one flat (B-flat), and a 2/4 time signature. The melody consists of eighth and sixteenth notes, with some slurs and ties. The notation includes various rhythmic markings such as '+' and 'x' below the notes, and a final double bar line with a repeat sign.

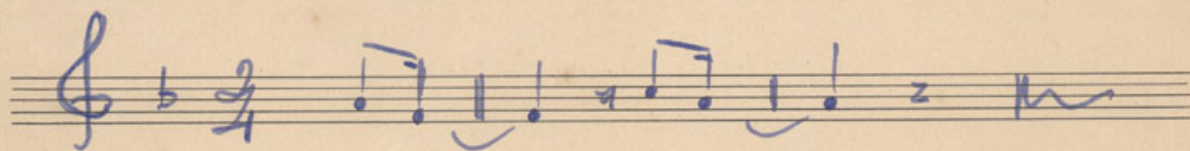
Samba "Maracangalha"

Handwritten musical notation for the Samba "Maracangalha". The score is written on one staff. It begins with a treble clef, a key signature of one flat (B-flat), and a 2/4 time signature. The melody consists of eighth and sixteenth notes, with some slurs and ties. The notation includes various rhythmic markings such as '+' and 'x' below the notes, and a final double bar line with a repeat sign.

Samba "Adalgisa"



"Tão só..." Samba canção



Toada "O Bem" do mar"

