

1ª Filatura 50 min. (2)

Introdução a Euridice

Violão

Calmo

p.

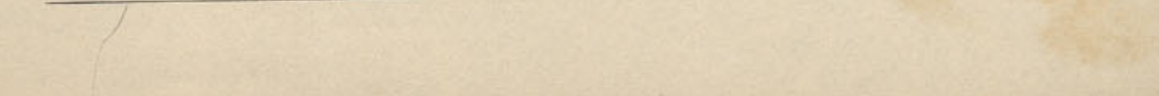
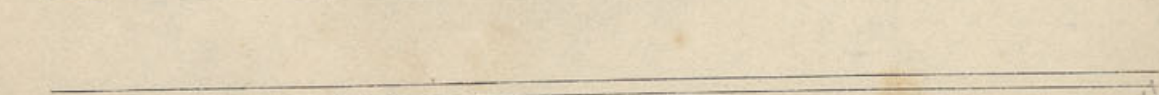
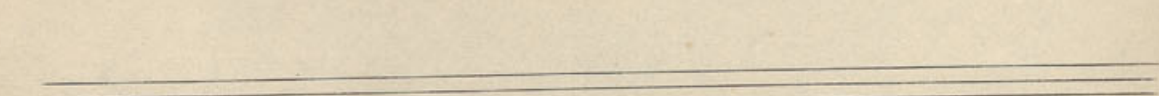
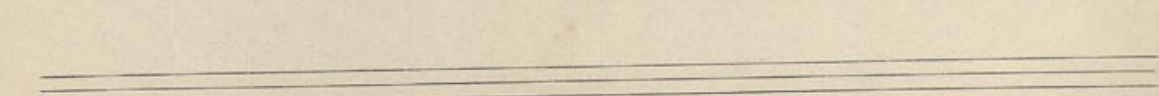
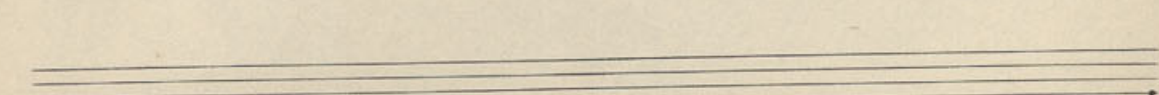
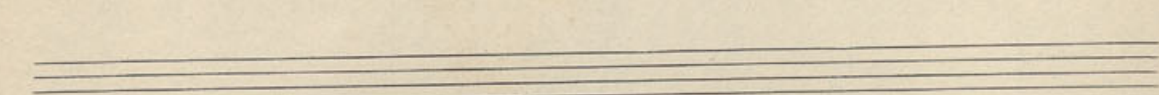
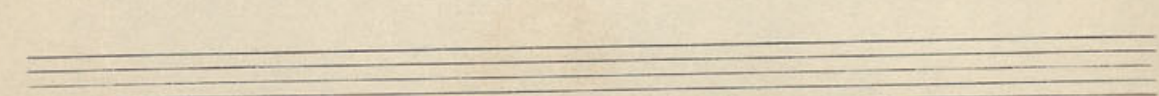
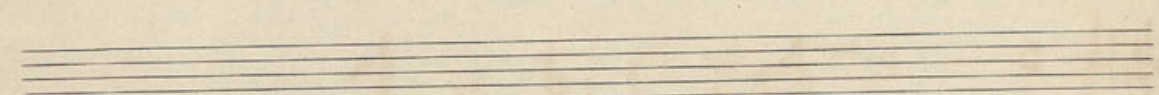
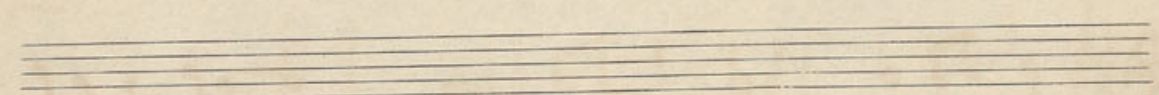
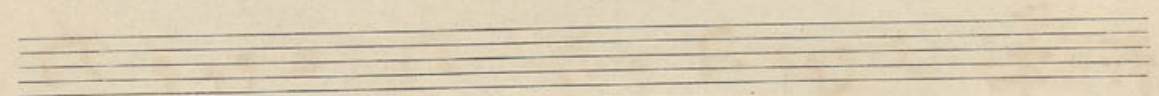
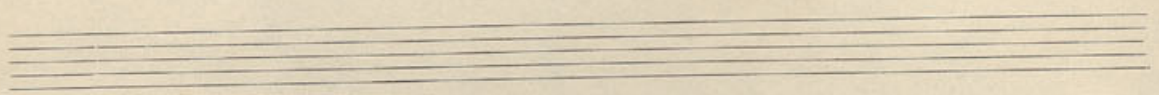
Eu sou Orfeu

3 e 4 = Tacet

278

coro

A single staff of music containing a treble clef, a key signature of one flat (B-flat), and a series of notes with stems and beams, including some triplets. The notation is handwritten and somewhat faded.

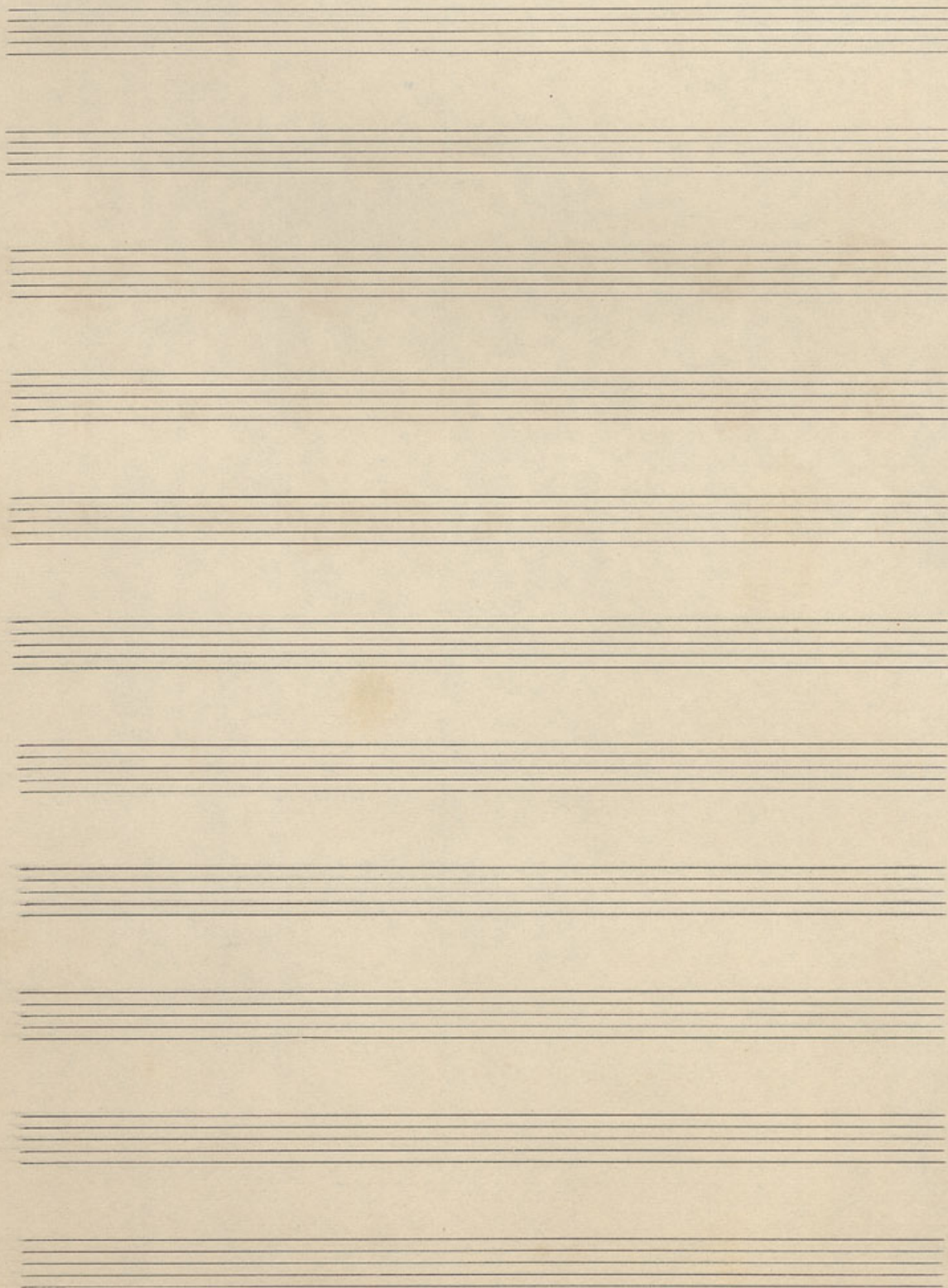


278

2^a Flauto

②

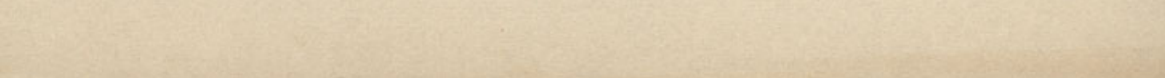
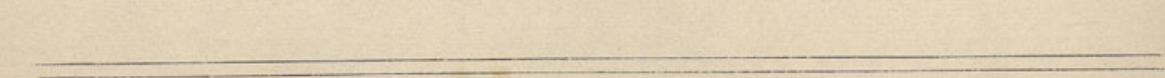
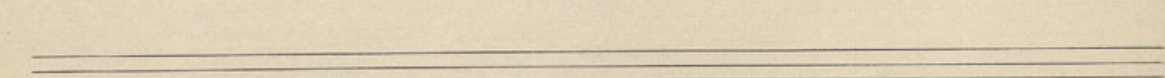
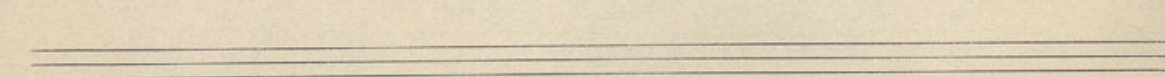
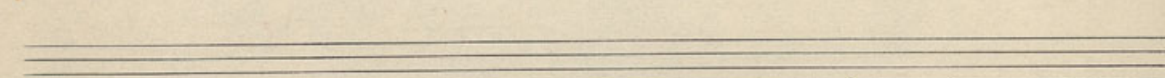
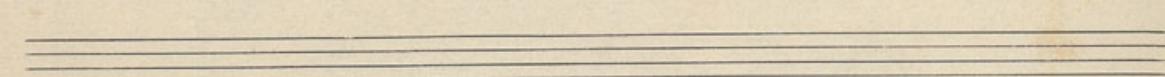
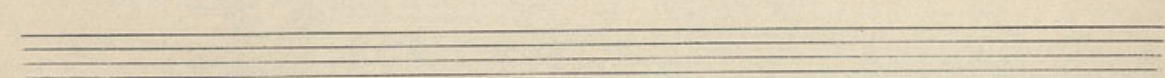
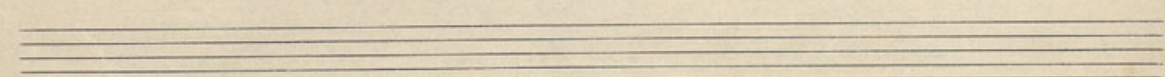
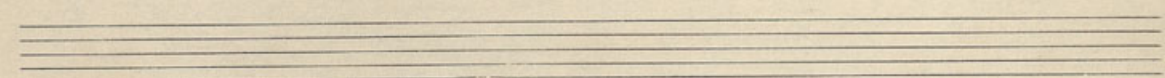
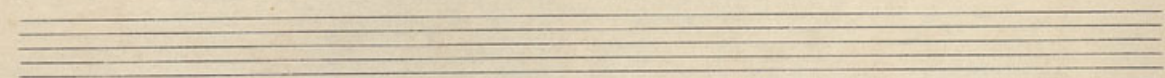
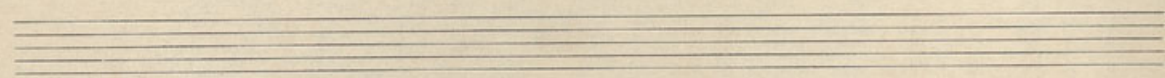
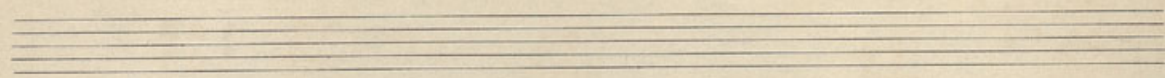
Introdução à Euridice



3 e 4 Tacet

ritornello a violini

Andante



②

1^o Violin

Introduca's a' Euridice

Surd.

③ e ④

Surd.

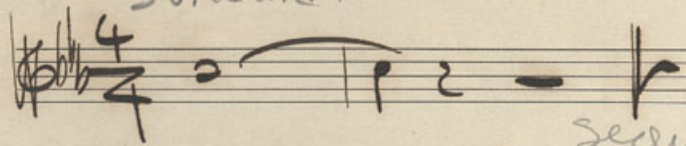
Euridice

1^a Violin

2

Introdução à Euridice

Sordina.

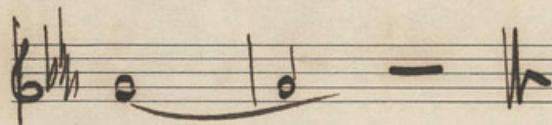
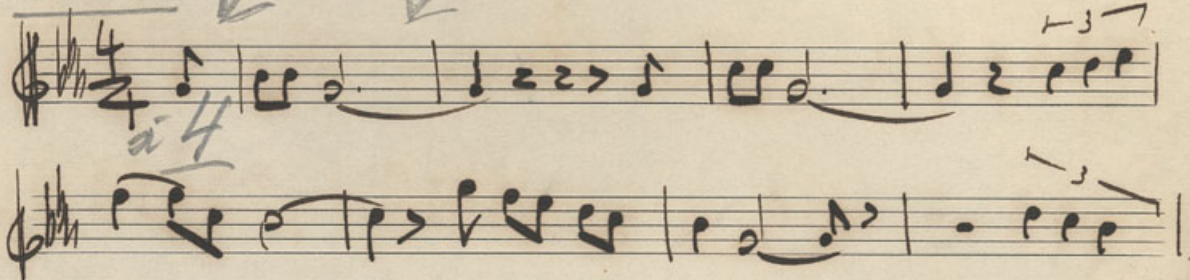


segue logo

3

e 4
Euridice

Sordina.



(espera o paterno)
2) Violas
3) Corno

2 vezes

2^o Violino

②

Introdução a Euridice

Musical notation for the beginning of the piece. It features a treble clef, a key signature of two flats (B-flat and E-flat), and a 4/4 time signature. The notation consists of a whole note followed by a half note, with a fermata over the half note. The word "Sordina" is written below the staff.

③ e ④
Euridice

Musical notation for the section titled "Euridice". It consists of three staves in treble clef, two flats key signature, and 4/4 time. The first two staves contain melodic lines with various rhythmic values and ornaments. The third staff begins with a whole note and a fermata, followed by the instruction "Piano Solo. Coro a peça".

Sord.

3^e Violins

②

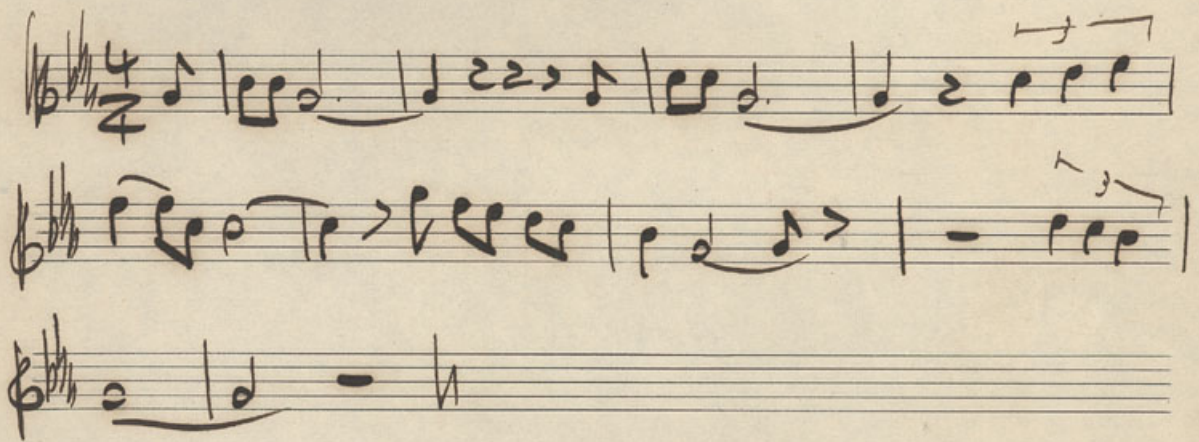
Introducais à Euridice



3 - Solo de primo a 4

③ e ④

Euridice

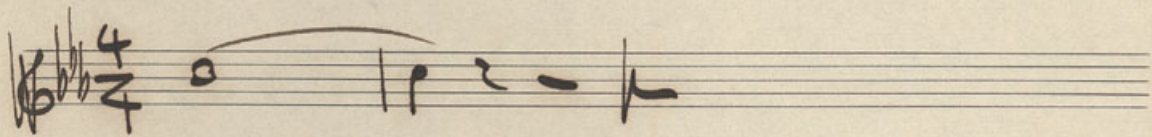


Via.

3^o Violino

②

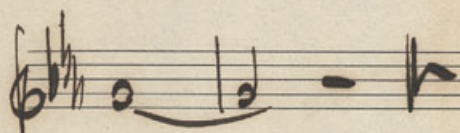
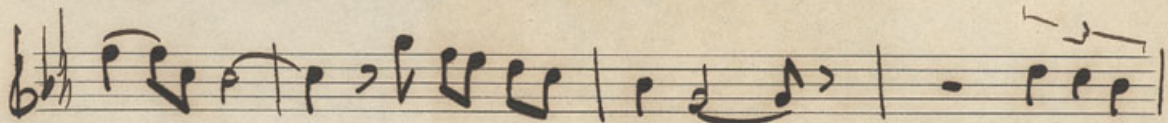
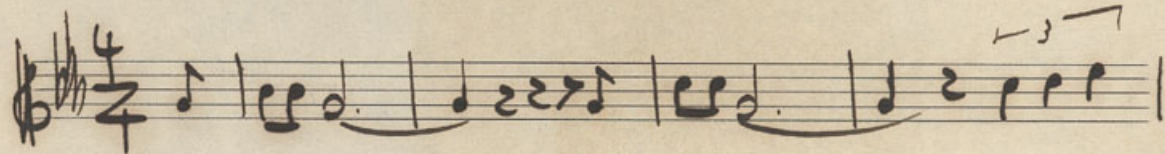
Introdução à Euridice



③

e ④

Euridice



4º Violino

②

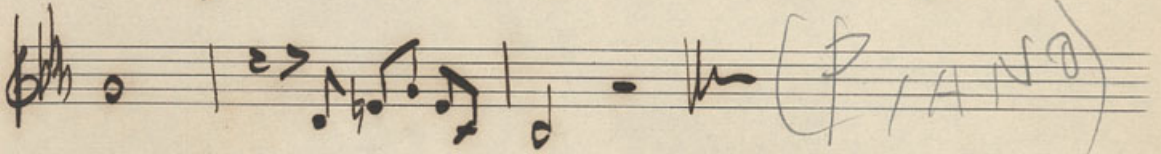
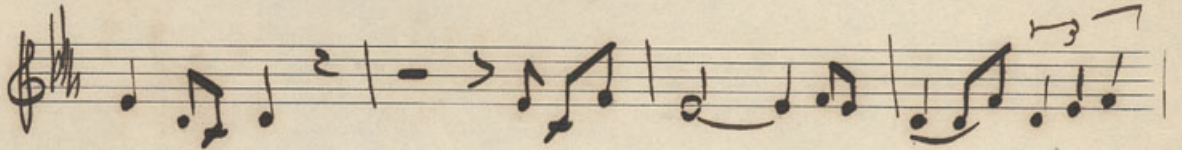
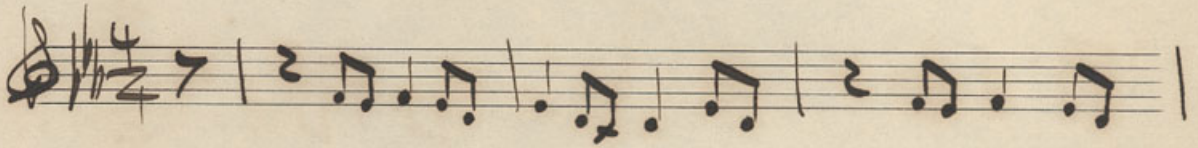
4ª

Introdução a Euridice

Surdina



③ e ④
Euridice



3 is → ④

4^o Violino

②

Introducaí a' Euidice

Handwritten musical notation on a single staff. It begins with a treble clef, a key signature of two flats (B-flat and E-flat), and a 4/4 time signature. The notation consists of a whole note followed by a half note, with a bar line after the half note. A diagonal line is drawn across the staff from the top left to the bottom right.

SORDINA

③ e ④
Euidice

Handwritten musical score for three staves. The top staff is in treble clef with a 4/4 time signature. The middle staff is in treble clef. The bottom staff is in bass clef with a key signature of two flats. The music consists of several measures of eighth and quarter notes, with some rests and dynamic markings.

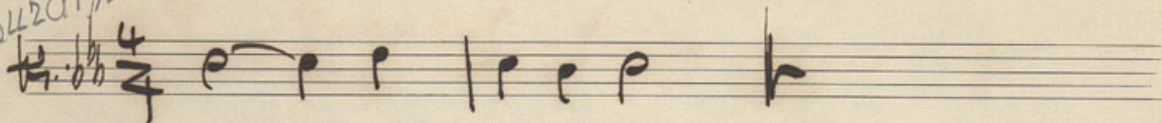
Five empty musical staves for further notation.

Vida

②

Introdução à Euridice

Surdina
H. b. b. 4/4

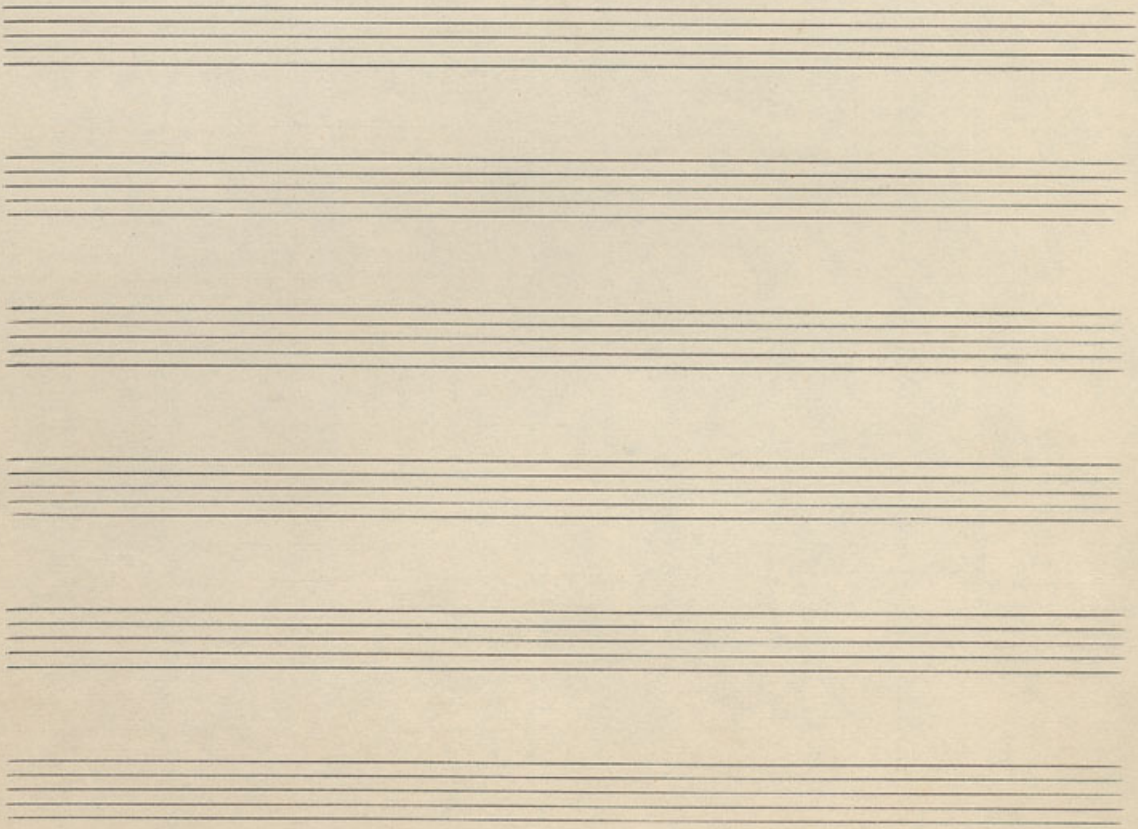
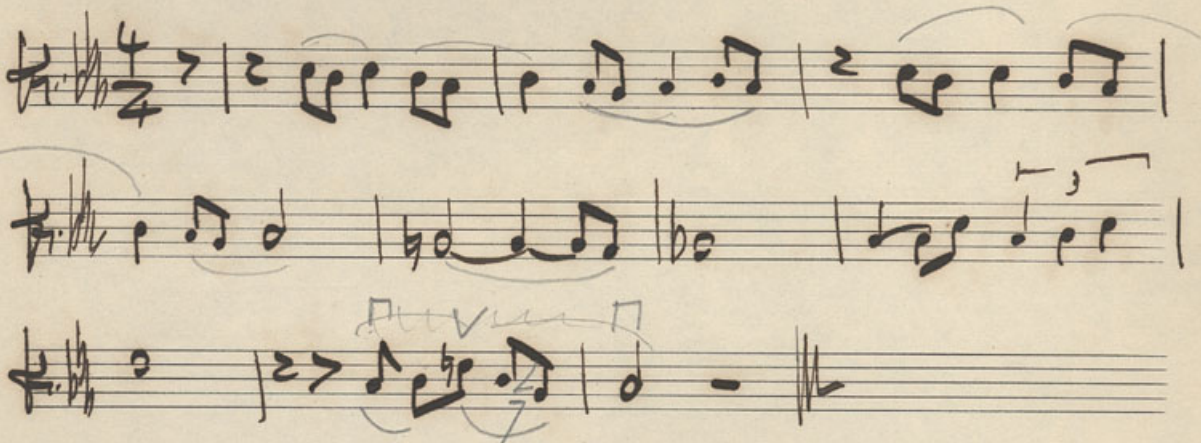


③

e

④

Euridice



Viola

②

Introdução à Euridice

Andante

③ e ④
Euridice

Violoncello

②

Introducas a Euridice

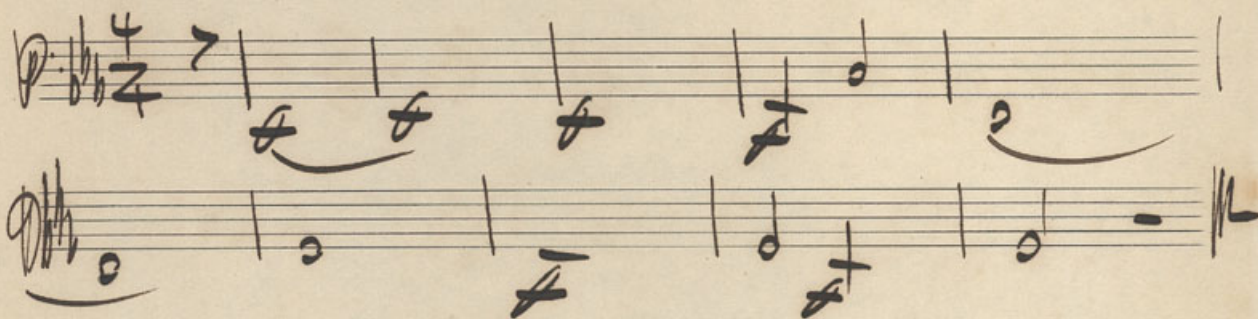


refete oo

SORDINA

③ e ④

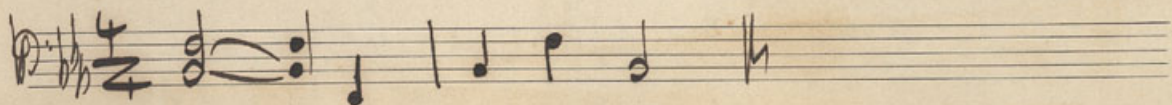
Euridice



Violoncelo

②

Introdução a Ewidice



③ 3 bis
piano e ④

Ewidice



3 = 3 bis piano = ~~violão~~ cõro =
4 =

③ e ④ Euridice

Piano

Handwritten musical score for Euridice, measures 3 and 4. The score is written on two systems of staves. The first system has two staves (treble and bass clef) with a 4/4 time signature. The second system also has two staves. The notation includes notes, rests, and dynamic markings like 'p' and 'f'.

Em seguida ^{o mesmo} em Mi Maior

A series of empty musical staves on the page, intended for further notation.

