

Will music x 72 comp

(PRINT. PIANO)

36.

40

# Castigo

for Bituca Orchestra

44.

46.

## Conductor Score

Wagner Tiso

1 *mf*

Flautas 1/2

1 *mf*

G Flute

1 *mf* *Unisono*

French Horn 1/2/3

1 *mf*

Trombones 1/3

1 *mf*

Trombones 2/4

1

Solista

Piano

FM7 Eb9 Dm7 Bb6 Am7

1 *mf*

Violinos A

1 *mf*

Violinos B

1 *mf*

Violas

1 *mf*

Celli

1 *mf*

C. Bass

2

49

52

56

59

5

Fls 1/2

G Fl

5

Fr. horns

5

Trbn

5

Trbn

5

Solo

Pno

Dm 9

E7/G

Em 7

Amin7

A7

5

Vn A

Vn B

Vla

5

Cel

5

CB

1.02

1.05

1.09

1.12

3

Fls 1/2

GH

Ft. hms. *mp*

Trbns

Solo

Pno

Va A

Va B

Vla

Cel

CB

Dm7 Gsus4 G13 E7 (b) A7M7/EE7(11) Asus4 A7

4

1.15

1.18

1.21

1.28

13 *mp Legato*

Fls 1/2

13 *mp Legato*

G Fl

13

Fr. horns.

13

Trbns

13

Trbns.

13

Solo

13

Pno

$Dm\ 7$   $B\ 7$   $E7(b9)$   $Am\ 7M$   $Am\ 7$   $Dsus4$   $D13$

13

Vn A

13

Vn B

13

Vlas

13

Cel

13

CB

1-22

1-31

1-34

1-37

5

17  
Fls 1/2

17  
GH

17  
Fr. Horns

17  
Trbns

17  
Trbns

17  
Solo

17  
Pno

Bm7/D Em7/D Am7/D D7(b9) A<sup>b</sup>7# B<sup>b</sup>6<sub>2</sub> Am<sup>7</sup> D<sup>b</sup>/A A7(b<sup>9</sup>)

17  
Vn A

17  
Vn B

17  
Vln

17  
Cel

17  
CB

6 1.40

1.43

1.47

1.50

21  
Fls 1/2

21  
G Fl

21  
Fr. horns.

21  
Trbns

21  
Trbns.

21  
Solo

21  
Pno

21  
Vn A

21  
Vn B

21  
Vlas

21  
Cel

21  
CB

Dm<sup>9</sup> E7/G Em<sup>7</sup> E<sup>b</sup>

1.53.

1.56

1.59.

2.02

7

Fls 1/2

GH

Fr. horns.

Trbn.

Trbn.

Solo

Pno

Vn A

Vn B

Vla

Cel

CB

Dmin7

G13

G7

B<sup>b</sup> sus 4

B<sup>b</sup>13

A sus 4 A7(<sup>b</sup>9)

8

205

2.08.

2.12

.2.15

Handwritten musical score for a symphony orchestra, measures 205 to 215. The score includes parts for Flute 1/2, G Flute, French Horns, Trumpets, Trombones, Solo, Piano, Violin A, Violin B, Viola, Cello, and Double Bass. The music is in 2/4 time and features various melodic and harmonic lines.

Measures 205 to 215 are shown. The score includes parts for:

- Fls 1/2
- G Fl
- Fr. horns.
- Trbus.
- Trbus.
- Solo
- Pno
- Vn A
- Vn B
- Vlas
- Cel
- CB

2-18

2-21

2-24.

2-28

9

Fls 1/2

G H

Fr. horns.

Trbus.

Trbus.

Solo

Pno

Vn A

Vn B

Vla

Cel

CB

*Soli legato*

*3*

*Dm 7*

*F/G*

*E/G*

*C*

*B7*

*Am 7M*

*Am 7*

10 2-31

234.

2-37.

2 40

37

Fls 1/2

G Fl

Fr. hrs.

Trbus

Trbus.

Solo

Pno

Vn A

Vn B

Vlas

Cel

CB

Dm/A

Gsus4

G13

B<sup>b</sup>13

Am 9

3

3

2-44.

2-44

2-49.

2-53 -

11

41 *Soli legato*

Fls 1/2

41 *Soli legato*

G Fl

41 [3]

Fr. horns

41

Trbns

41

Trbns

41

Solo

41

Pno

A<sup>b</sup>13 Gsus 4 A/F FMaj 6 E<sup>b</sup>9 Dm<sup>9</sup> C7(#11) F<sup>9</sup> sus 4

41

Va A

41

Va B

41

Vlans

41

Cel

41

CB

12 2.56.

2.59.

3.03

3.06

45

Fls 1/2

G Fl

45

Fr. horns

45

Trbns

45

Trbns

45

Solo

Pno

45

Vn A

Vn B

Vlas

45

Cel

45

CB

B<sup>b</sup>2

Am 7

Dm 9

E7/G

3-09

3-12

3-15

3-18

Fls 1/2

GR

Fz. hrs.

Trbn.

Trbn.

Solo

Pno

Em<sup>7</sup> 9

E<sup>b</sup>

Dmin<sup>7</sup>

G13

G<sup>7</sup><sub>9</sub>

Vn A

Vn B

Vla

Cel

CB

14 3-21

3-24

3-28

3-31

Fls 1/2 53

G Fl 53

Fr. horns. 53

Trbns 53

Trbns. 53

Solo 53

Pno 53

B<sup>b</sup> sus 4 B<sup>b</sup> 13 A sus 4 A 7(b9) F Maj 7 F<sup>b</sup> m 7(b5) B 7(♯1)

Vn A 53

Vn B 53

Vlas 53

Cel 53

CB 53

3.34.

3.37

3.40

3.43

15

57  
Fls 1/2

57  
G R

57  
Fr. horns.

57  
Trbns

57  
Trbns.

57  
Solo

57  
Pno

57  
Vn A

57  
Vn B

57  
Vln

57  
Cel

57  
CB

Emin7 Fmin7 Am<sup>7</sup> A<sup>7</sup> Dmin7 G13 E/F

16 3.47

3.50.

3.53

3.56

61

Fls 1/2

G Fl

61

Fr. hms.

61

Trbns

61

Trbns.

61

Solo

61

Pno

E13 B<sup>b</sup>13 Asus4 A13(b9)

61

Vn A

61

Vn B

61

Vlas

61

Cel

61

CB

3.59

4.02

4.05

4.09

17

85

Fis 1/2

GH

85

Fr. hma.

85

Trbas

85

Trbas.

85

Solo

85

Pno

85

Va A

85

Va B

85

Vla

85

Cel

85

CB

Dm<sup>7</sup>

B/G G13

18

4.12

4.15

4.18

4.21

Fls 1/2

G Fl

Fr. hms. *Legato*

Trbas

Trbns.

Solo

Pno

Vn A

Vn B

Vlas

Cel

CB

Detailed description: This is a page of a musical score, page 18, showing measures 18 through 21. The score is for a symphony orchestra. The instruments listed on the left are Fls 1/2, G Fl, Fr. hms. (Flute Harmonica), Trbas (Trumpet), Trbns. (Trombone), Solo (Soloist), Pno (Piano), Vn A (Violin A), Vn B (Violin B), Vlas (Viola), Cel (Cello), and CB (Double Bass). The measures are marked with time signatures 4.12, 4.15, 4.18, and 4.21. The Fr. hms. part is marked *Legato*. The Pno part is marked with a brace. The Vn A, Vn B, and Vlas parts are marked with a brace. The Cel and CB parts are marked with a brace. The score is written in standard musical notation with staves and notes.

# Castigo

for Bituca Orchestra

Wagner Tiso

Flautas 1/2

1 *mf* 3 2 4

Fls 1/2

9 2 2 *mp Legato*

Fls 1/2

16

Fls 1/2

21

Fls 1/2

27 2

Fls 1/2

33 2

Fls 1/2

39 3 *Soli legato* 3 2

Fls 1/2

47 4 2 2

Fls 1/2

59 3

Fls 1/2

67

# Castigo

for Bituca Orchestra

Wagner Tiso

1 *mf*

G Flute

9 *mp Legato*

G Fl

16

G Fl

21

G Fl

27

G Fl

33

G Fl

39 *Soli legato*

G Fl

47

G Fl

59

G Fl

67

G Fl

# Castigo

for Bituca Orchestra

Wagner Tiso

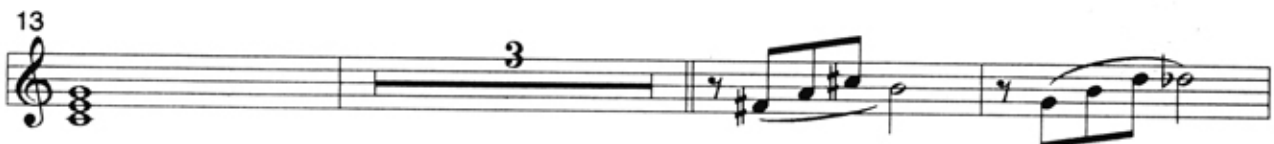
French Horn 1/2/3



Fr. hrns.



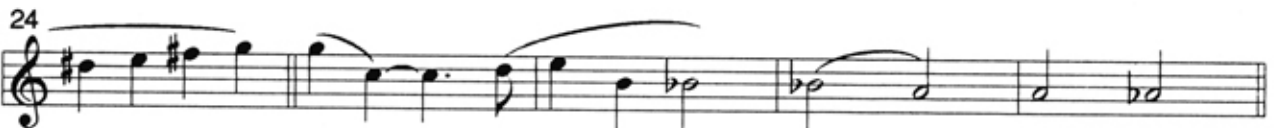
Fr. hrns.



Fr. hrns.



Fr. hrns.



Fr. hrns.



Fr. hrns.



Fr. hrns.



Fr. hrns.



Fr. hrns.



## 2

*Castigo*

Fr. hrns.

Fr. hrns.

Fr. hrns.

Fr. hrns.

# Castigo

for Bituca Orchestra

Wagner Tiso

1 *mf* *ff*

Trombones 1/3




9

Trbns




20

Trbns



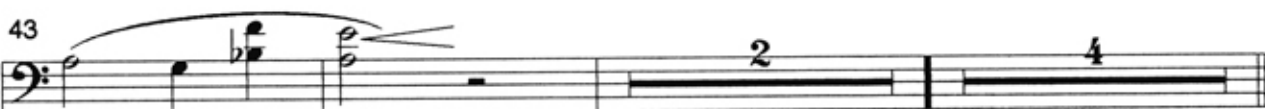
29

Trbns



43

Trbns



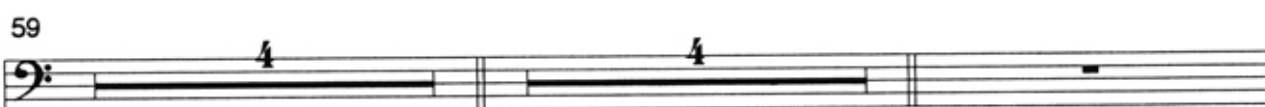
51

Trbns



59

Trbns



68

Trbns



# Castigo

for Bituca Orchestra

Wagner Tiso

Trombones 2/4



Trbns.



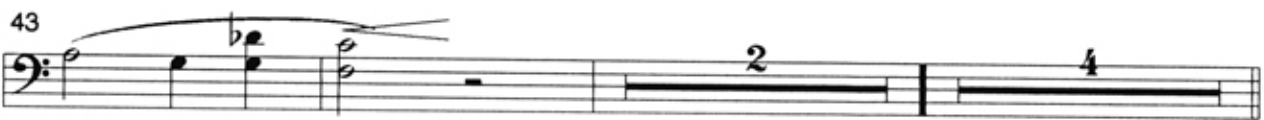
Trbns.



Trbns.



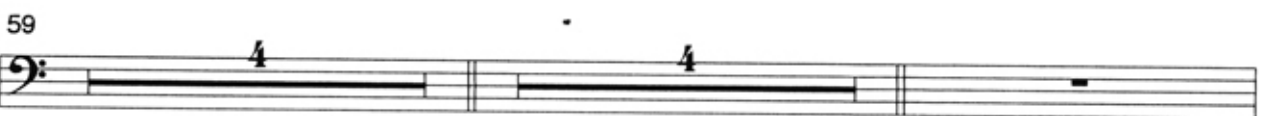
Trbns.



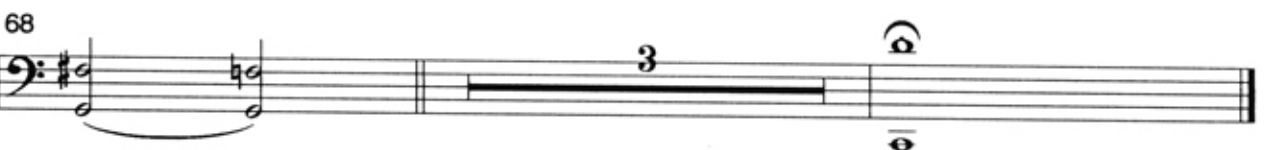
Trbns.



Trbns.



Trbns.



# Castigo

for Full Orchestra

by Wagner Tiso

**1** *Banda*

Piano

FM7 E<sup>b</sup>9 Dm<sup>7</sup> B<sup>b</sup>6<sub>2</sub>

**4**

Pno

Am<sup>7</sup> 4 8<sup>vb</sup> Dm<sup>7</sup> E7/G

**7**

Pno

Em<sup>7</sup> 9 Amin7 A<sup>7</sup><sub>5#</sub> Dm<sup>7</sup> 9

**10**

Pno

Gsus4 G13 E<sup>b</sup>9<sup>#</sup> A<sup>7</sup>M7/E (b) E7(<sup>#</sup>11) Asus4 A<sup>7</sup><sub>5#</sub>

**13**

Pno

8<sup>vb</sup> Dm<sup>7</sup> B<sup>7</sup><sub>5#</sub> E7(<sup>b</sup>9) Am<sup>7</sup>M Amin7

**16**

Pno

Dsus4 D13 Bm<sup>7</sup>/D Em<sup>7</sup>/D Am<sup>7</sup>/D D7(<sup>b</sup>9)

**19**

Pno

A<sup>7</sup><sub>4#</sub> B<sup>b</sup>6<sub>2</sub> Am<sup>7</sup> D<sup>b</sup>/A A7(<sup>b</sup>9) 8<sup>vb</sup> Dm<sup>7</sup>

22

Pno

(8<sup>th</sup>) - E7/G Em 7<sup>9</sup> E<sup>b</sup>

25

Pno

Dmin7 G13 G<sup>7</sup><sub>5#</sub> B<sup>b</sup>sus4 B<sup>b</sup>13

28

Pno

Asus4 A7(<sup>b</sup>9)

31

Pno

Dm 7<sup>9</sup>

34

Pno

F/G E/G C2 B<sup>b</sup>7 Am 7M Am 7

37

Pno

Dm/A Gsus4 G13 B<sup>b</sup>13

40

Pno

Am 7<sup>9</sup> A<sup>b</sup>13 Gsus4

# Castigo

3

43

Pno

A/F FMaj6 Eb9 Dm7 Fsus4 B7(#11) Bb6<sub>2</sub>

46

Pno

Am7 Dm7 E7/G

49

Pno

Em7 Eb Dmin7

52

Pno

G13 G7<sub>5</sub><sup>#</sup> Bbsus4 Bb13 Asus4 A7(b9)

55

Pno

FMaj7 F#m7(b5) B7(#11) Emin7 Fmin7

58

Pno

Am7 A7<sub>5</sub><sup>#</sup> Dmin7 G13 E/F

61

Pno

E13 Bb13 Asus4 A13(b9) E13 Bb13

64

Pno

64

67

Pno

67

Dm 7 9

B/G

G13

70

Pno

70

# Castigo

for Bituca Orchestra

Wagner Tiso

Violinos A

1 *mf* *ff* 4

Vn A 9 2

Vn A 16

Vn A 22 3 4

Vn A 33 2 3

Vn A 42 *ff*

Vn A 47 4 2 8va

Vn A 56 3

Vn A 63

Vn A 68

# Castigo

for Bituca Orchestra

Wagner Tiso

Violinos B

1 *mf* *< ff* 4

9 2

16

22 3 4

33 2 3

42 *< ff*

47 4 2 8va

56 3

63

68

Vn B

# Castigo

for Bituca Orchestra

Wagner Tiso

1 *mf* *ff*

Violas

9

Vlas

16

Vlas

22

Vlas

33

Vlas

42

Vlas

47

Vlas

55

Vlas

63

Vlas

68

Vlas

# Castigo

for Bituca Orchestra

Wagner Tiso

1 *mf* *ff*

Celli

9

Cel

16

Cel

21

Cel

33

Cel

42

Cel

47

Cel

55

Cel

63

Cel

68 # 4

Cel

# Castigo

for Bituca Orchestra

Wagner Tiso

1 *mf* *ff*

C. Bass

9

CB

16

CB

20

CB

33

CB

42

CB

47

CB

55

CB

62

CB

69

CB