

JOBIM

*Arr. by* CLAUD OGERMAN

NUVENS DOURADAS

WEDO'S MUSIC WRITING SERVICE

218 West 49th Street

New York, N. Y. 10019 Circle 5-2150-1

Slowly

NOVENS JOURADAS  
(GOLDEN CLOUDS)

Arr. by C. OGERMAN

4 Flutes

22 (104)  
b3

Handwritten musical notation for 4 Flutes, including notes, rests, and dynamic markings (mp, p).

A B C D

Trombone (1)

Violins (12)

all (5)

Handwritten musical notation for Trombone (1), Violins (12), and all (5), including notes, rests, and dynamic markings (p).

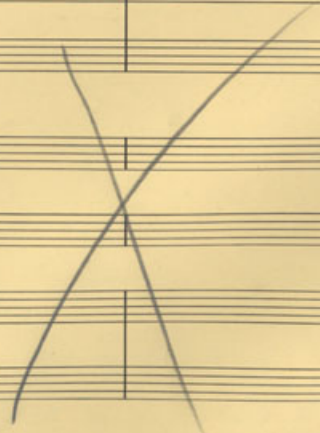
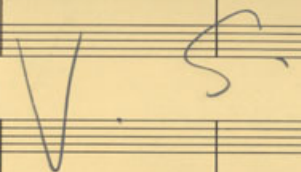
Guitar

Piano

Bass

Drum

Handwritten musical notation for Guitar, Piano, Bass, and Drum, including notes, rests, and dynamic markings (p).



A

To alto Flutes!

3 alto Flutes!

Fl.

1 2 3 4 5 6 7 8

TB.

Sax.

Guitar

Dm7 / D6 / Dm7 / D+5 / E7m7 Eb7 / Ab / A7-9 / F#m7 / D / F# / F#m6 / F#m7 / F#m7 / B9 / B5

Slide →

Piano

Solo (add chords for GIT.)

Bass

Drums

(B)

Fe.

9 10 11 12 13 14 15 16

Tr.

Str.

Guitar

Gmaj7 G-7 A/C# A7/C G#m/Bb Bb7 Gm/Bb

Piano

Bass

Drums

(TO REGULAR FUTES?)

Fl.

Handwritten musical notation for Flute (Fl.) across measures 17 to 24. The notation includes various notes, rests, and dynamic markings such as *p* and *p.*. There are also some annotations like "a4" and "5" above the notes.

17 18 19 20 21 22 23 24

T.B.

An empty musical staff for Trombone (T.B.) with a key signature of two flats.

Sax.

Handwritten musical notation for Saxophone (Sax.) across measures 17 to 24. The notation includes notes, rests, and dynamic markings. There are also some annotations like "(ad.)" and "3" above the notes.

Guitar

Handwritten musical notation for Guitar across measures 17 to 24. The notation includes chord symbols such as  $E^b$ ,  $A^7$ ,  $Gm$ ,  $E^b$ ,  $Gm^b$ ,  $Gm$ ,  $Gm^7$ , and  $C^7$ .

Piano

Handwritten musical notation for Piano across measures 17 to 24. The notation includes notes, rests, and dynamic markings.

Bass

Handwritten musical notation for Bass across measures 17 to 24. The notation includes notes, rests, and dynamic markings.

Drums

Handwritten musical notation for Drums across measures 17 to 24. The notation includes rests and dynamic markings.

**Fe.**

25      26      27      28      29      30      31      32

**TB.**

*espressivo*

*div.*

**Guitar**

Ab / Abmaj7 / Ab-7 5      Dm7/6 / G7 / G7      B / F#      Bmaj7 / F#      Fm7 5      Bb-9

**Piano**

*slow*  
25

**Bass**

**Drums**

(E)

(F) <sup>a4</sup> 2

Fl.

Flute staff with notes and dynamics. Notes are present in measures 37-40. Dynamics include (p) and a large downward arrow indicating a dynamic shift.

33

34

35

36

37

38

39

40

TB.

Tuba staff, mostly empty with some faint markings.

Sfr.

Soprano staff with notes and dynamics. Notes are present in measures 33-40. Dynamics include (p) and a large downward arrow.

Guitar

Guitar staff with notes and dynamics. Notes are present in measures 37-40. Dynamics include (p) and a large downward arrow.

Piano

Piano staff with notes and dynamics. Notes are present in measures 33-40. Dynamics include (p) and a large downward arrow.

Bass

Bass staff with notes and dynamics. Notes are present in measures 37-40. Dynamics include (p) and a large downward arrow.

Drums

Drums staff with notes and dynamics. Notes are present in measures 37-40. Dynamics include (p) and a large downward arrow.

(6) *allegretto*  
24

Fl.

Handwritten musical notation for Flute (Fl.) across measures 41 to 48. The notation includes notes, rests, and dynamic markings such as *mp*. Arched lines connect notes across measures, and large downward-pointing arrows are drawn below the staff.

41 42 43 44 45 46 47 48

TB.

Handwritten musical notation for Trombone (TB.) across measures 41 to 48. The notation includes notes, rests, and dynamic markings such as *mp*. Arched lines connect notes across measures.

Sbr.

Handwritten musical notation for Saxophone (Sbr.) across measures 41 to 48. The notation includes notes, rests, and dynamic markings such as *mp*. Arched lines connect notes across measures. There are handwritten notes like "(rou) diu" and "(sou) E" with arrows pointing to specific notes.

Guitar

Handwritten musical notation for Guitar across measures 41 to 48. The notation consists of chord names: *Dm7, D6, Dm7, D+5, Ebm7, Ebm7/Ab, Ab-9, F#m7, D/F#, F#m6, F#m7, F#m/B, B-9*.

Piano

Handwritten musical notation for Piano across measures 41 to 48. The notation is mostly blank with some faint markings.

Bass

Handwritten musical notation for Bass across measures 41 to 48. The notation includes notes, rests, and dynamic markings such as *p*. Arched lines connect notes across measures.

Drums

Handwritten musical notation for Drums across measures 41 to 48. The notation consists of large 'X' marks indicating drum hits.



(H)

TO BASS Flutes!

4 Bass Flutes!

Reeds

49 50 51 52 53 54 55 56

Trumpets

TB.

Drumlines

Sdr.

Guitar

Guitar

Gmaj7 G7 A/C# Ab/C G/B Bm6 Bm6/C# C#5

Piano

Bass

Drums

I

blatant

Reeds

Fl.

57 58 59 60 61

Trumpets

T.B.

Trombones

Str.

Guitar

Piano

Bass

Drums

FINE