

What can I say to you Bonita

What magic words would capture you

Like a soft evasive mist - you are Bonita

Are you escaping once again -

What shall I be for you Bonita

What part do you ask me to play -

Shall I be the clown for you Bonita

I will be anything you say -

Bonita - That's what you are - Bonita -

Bonita - why can't you be - Bonita -
just for me -

I love you - I love you - I swear it

I love you - Bonita

If you love me life would be BEAUTIFUL

Bonita

THE WINDOW

(Corcovado)

Bossa-Nova

SUGGESTED
RHYTHM
PATTERN



Original Words and Music by:
ANTONIO CARLOS JOBIM

English Words by:
GENE LEES

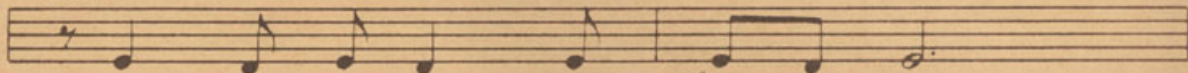
Moderate Bossa - Nova

D9 (A Bass)



Qui - et nights of qui et stars,

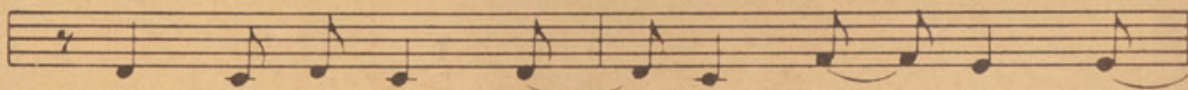
Ab dim.



qui - et chords from my gui - tar

Gm7

G7

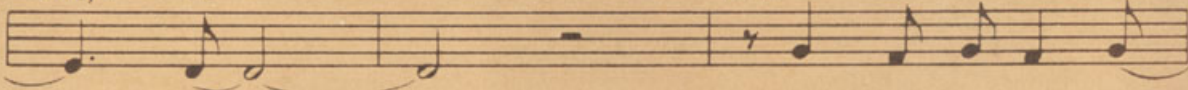


float - ing on the si - lence that sur - rounds

Fmaj7

F6

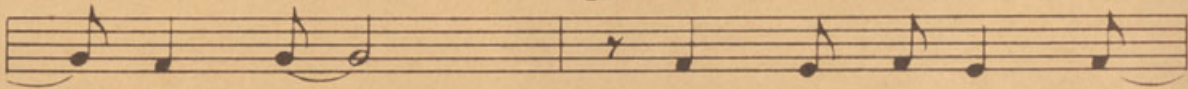
Fm7



us. Qui - et thoughts and qui

Fm7

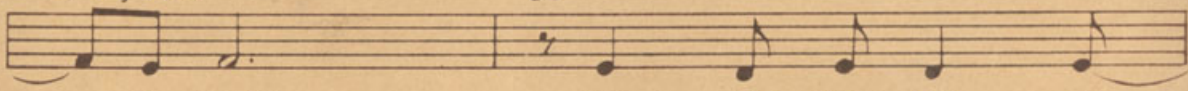
Em7



et dreams qui - et walks by qui

A7 aug 5 (b9)

D9



et streams, and THE WIN - DOW that

D9 Dm7 Abdim.
looks out on Cor co - va - do, oh

Abdim. D9 (A Bass)
how love ly. This is where I want

D9 (A Bass) Abdim.
to be, here, with you so close

Abdim. Gm7 3
to me. Un - til the fin - al

Gm7 Gb7 Fmaj7 F6
flick - er of life's em - ber.

Fm7 Fm Fm6
I, who was lost and lone - ly,

Em7 Am7
be - liev - ing life was on - ly

Dm7 G7 (b9)
a bit - ter, tra - gic joke, have found with you

Em7 A7 aug.5 (b9) Dm7
the pur - pose of ex -

G9 G7 (b9) C
ist - ence, oh my love.

Bonita

What CAN I SAY TO YOU - BONITA
WHAT MAGIC WORDS WOULD CAPTURE YOU,
LIKE A SOFT EVASIVE MIST - YOU ARE BONITA.
YOU FLY AWAY WHEN LOVE IS NEW.

WHAT DO YOU ASK OF ME - BONITA?
WHAT PART DO YOU WANT ME TO PLAY?
SHALL I BE THE CLOWN FOR YOU - BONITA?
I WILL BE ANYTHING YOU SAY!

Bonita - DON'T RUN AWAY - Bonita -

Bonita - DON'T BE AFRAID TO FALL IN LOVE
WITH ME -

I LOVE YOU - I TELL YOU - I LOVE YOU -

I love you - Bonita -

IF YOU LOVE ME LIFE WOULD BE BEAUTIFUL.

Bonita -