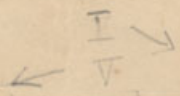


Fa M



Do M



20 pages

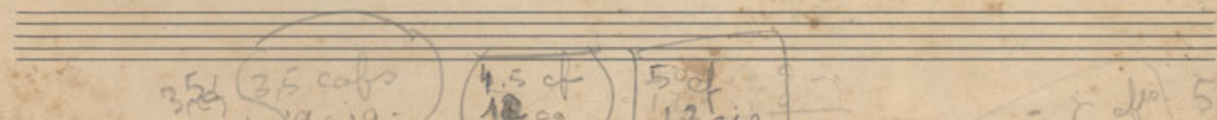
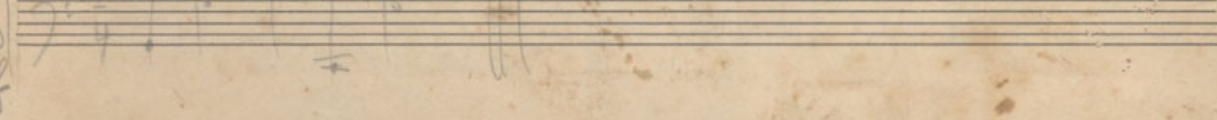
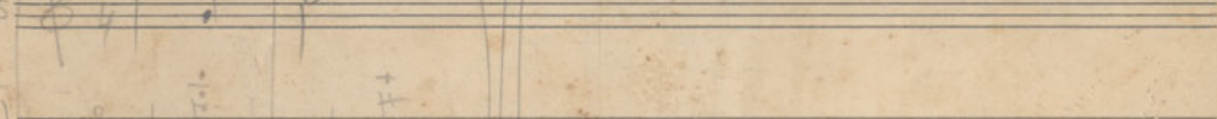
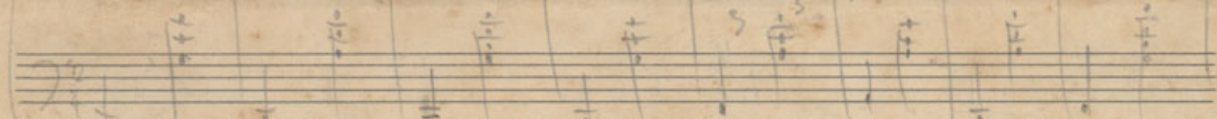
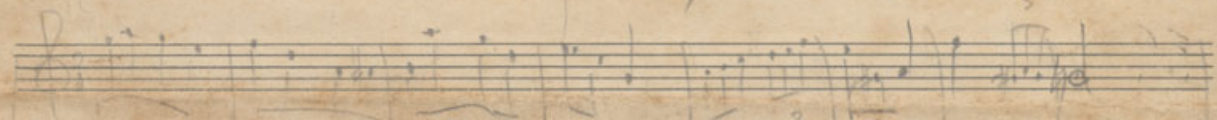
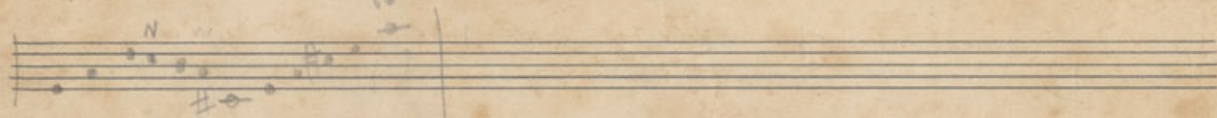
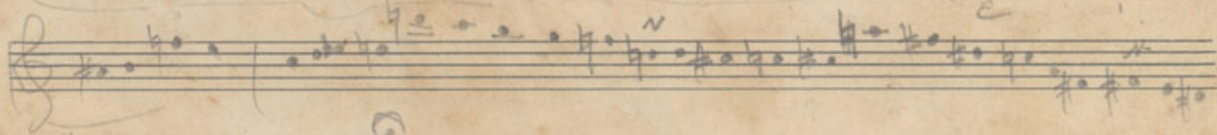
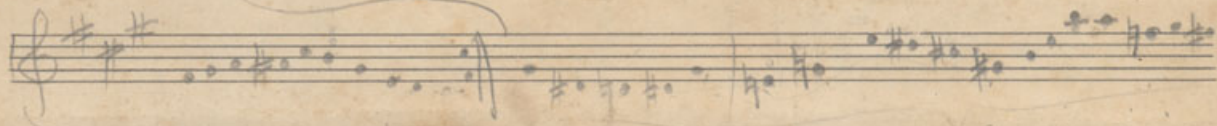
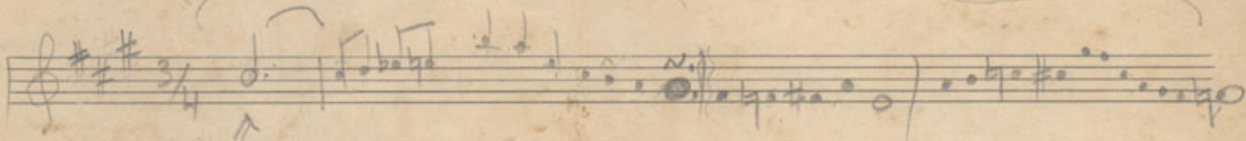
1254150
 508333
 5

B-A-C-B

A

Ameyunes.

B



354 35 caps
8 cig. 19 cig.

4.5 of
12 cig

5 of
12 cig
80

2.5 C. of 5 cig
3 C. of 16 cig

Handwritten musical notation on a two-staff system. The top staff is in treble clef and the bottom in bass clef. The key signature has two sharps (F# and C#). The time signature is common time (C). The music consists of several measures with various note values and rests.

Handwritten musical notation on a two-staff system. The top staff is in treble clef and the bottom in bass clef. The key signature has two sharps (F# and C#). The time signature is common time (C). The music consists of several measures with various note values and rests.

Handwritten musical notation on a two-staff system. The top staff is in treble clef and the bottom in bass clef. The key signature has two sharps (F# and C#). The time signature is common time (C). The music consists of several measures with various note values and rests.

Handwritten musical notation on a two-staff system. The top staff is in treble clef and the bottom in bass clef. The key signature has two sharps (F# and C#). The time signature is common time (C). The music consists of several measures with various note values and rests.

Handwritten musical notation on a two-staff system. The top staff is in treble clef and the bottom in bass clef. The key signature has two sharps (F# and C#). The time signature is common time (C). The music consists of several measures with various note values and rests.

Handwritten musical notation on a two-staff system. The top staff is in treble clef and the bottom in bass clef. The key signature has two sharps (F# and C#). The time signature is common time (C). The music consists of several measures with various note values and rests. The word "Fin" is written at the end of the piece.

Fin