

# Preludio

A.C. Jobin

Handwritten musical notation on a single staff, featuring a treble clef, a 4/4 time signature, and various notes with accidentals and plus signs.

Handwritten musical notation on a single staff, continuing the piece with similar notation and plus signs.

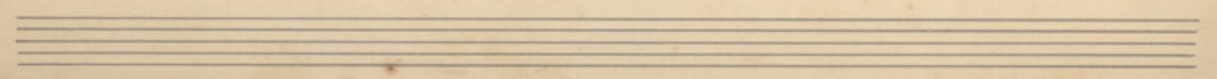
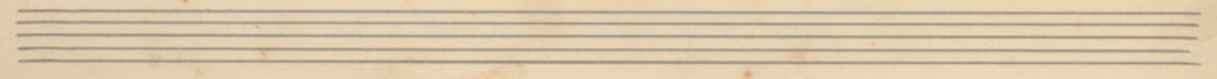
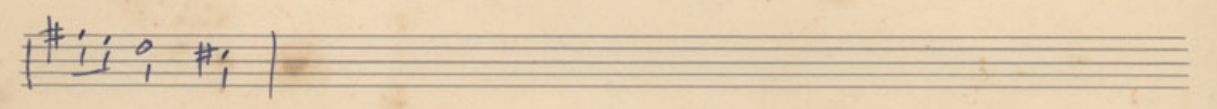
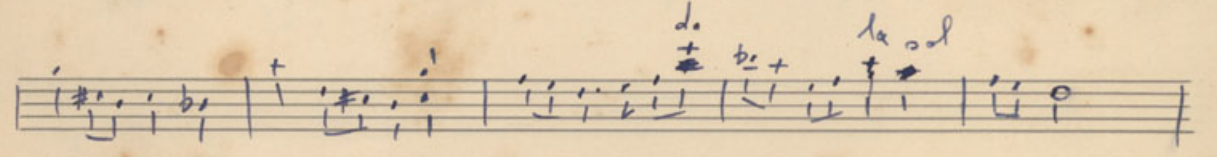
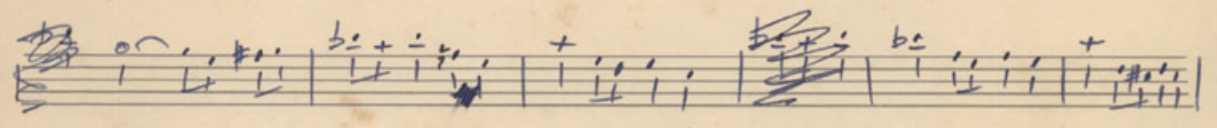
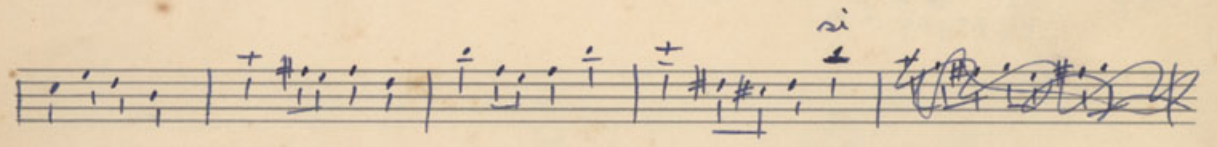
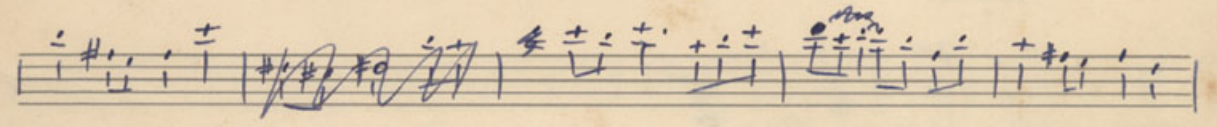
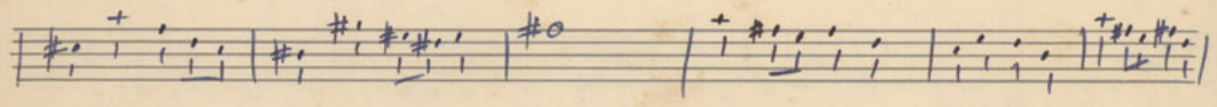
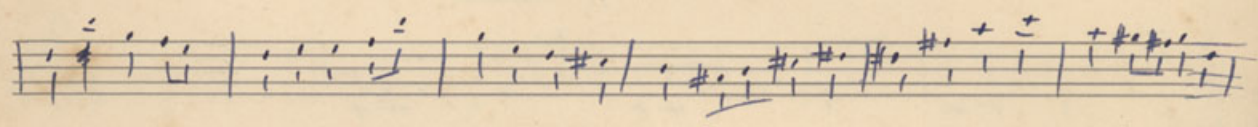
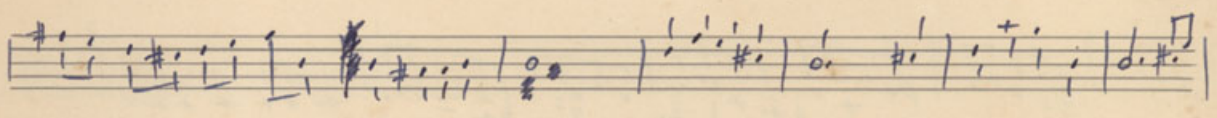
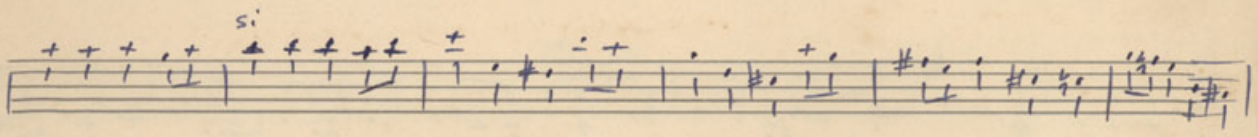
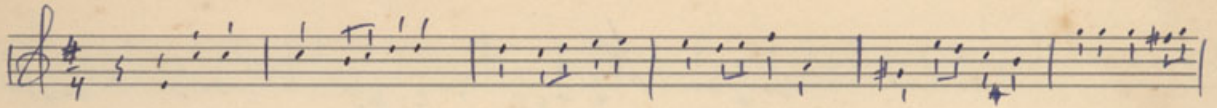
Handwritten musical notation on a single staff, showing more complex rhythmic patterns and plus signs.

Handwritten musical notation on a single staff, with a double bar line and plus signs.

Melhor

Handwritten musical notation on a single staff, with a double bar line and plus signs.

Handwritten musical notation on a single staff, including chord symbols: Db7, Eb7+5+9, G7, and Cm.



Handwritten musical notation on a grand staff (treble and bass clefs). The first system contains five measures. The treble clef staff has notes with various accidentals (sharps, flats, naturals) and stems. The bass clef staff is mostly empty.

Handwritten musical notation on a grand staff. The second system contains five measures. The treble clef staff has notes with accidentals and stems. The bass clef staff has a few notes, including a double sharp symbol.

Handwritten musical notation on a grand staff. The third system contains five measures. The treble clef staff has notes with accidentals and stems. The bass clef staff has a few notes, including a double sharp symbol.

Handwritten musical notation on a grand staff. The fourth system contains six measures. The treble clef staff has notes with accidentals and stems. The bass clef staff has a few notes, including a double sharp symbol.

Handwritten musical notation on a grand staff. The fifth system contains three measures. The treble clef staff has notes with accidentals and stems. The bass clef staff has a few notes, including a double sharp symbol. The system ends with a double bar line.

Empty grand staff consisting of two staves.

Empty grand staff consisting of two staves.

