

Samba sem princípios.

Handwritten musical notation for the first system. It consists of a grand staff with two staves. The key signature is three sharps (F#, C#, G#) and the time signature is 2/4. The music features a melody in the upper staff with several triplet markings (indicated by a '3' in a circle) and a bass line in the lower staff with chords and single notes.

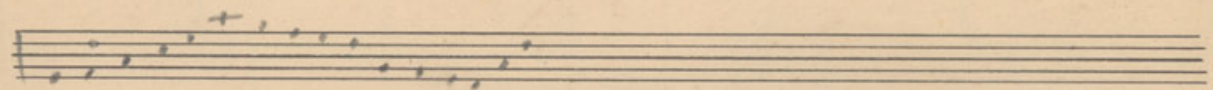
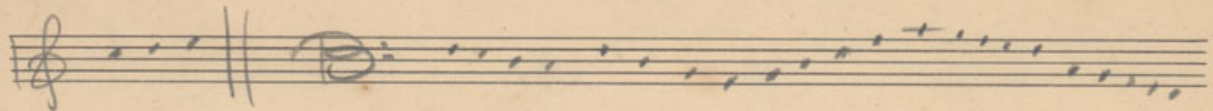
Handwritten musical notation for the second system. It continues the piece with similar melodic and harmonic patterns, including triplet markings in the upper staff and chordal accompaniment in the lower staff.

Handwritten musical notation for the third system. The notation shows further development of the melodic and harmonic ideas, with triplet markings and various chordal structures.

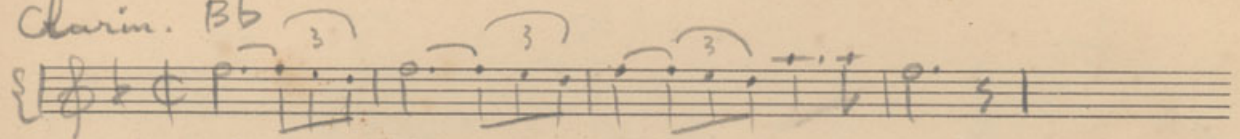
Handwritten musical notation for the fourth system. This system includes a double bar line and a repeat sign (two dots) at the end of the lower staff, indicating a section to be repeated.

Handwritten musical notation for the fifth system. It continues the melodic and harmonic progression with triplet markings and chordal accompaniment.

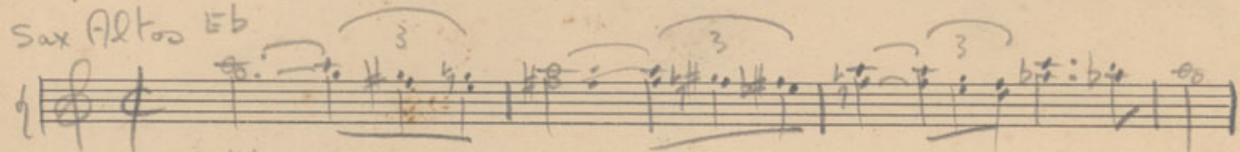
Handwritten musical notation for the sixth system. The final system on the page, showing the continuation of the melodic and harmonic patterns with triplet markings.



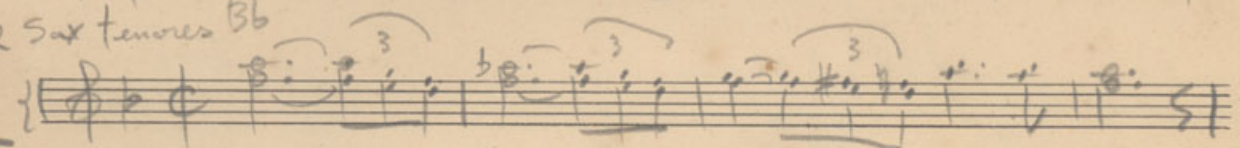
Clarim. Bb



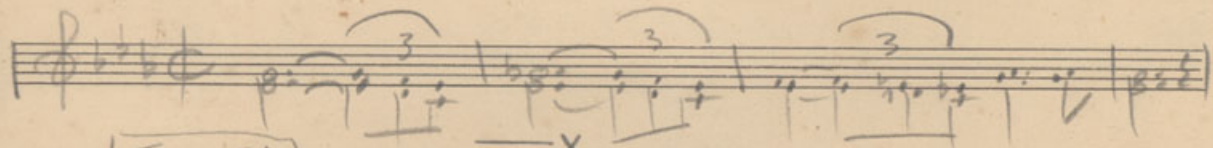
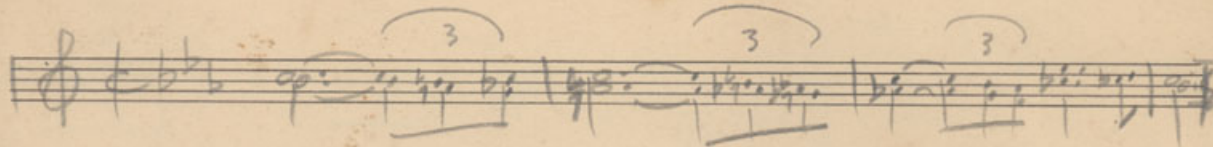
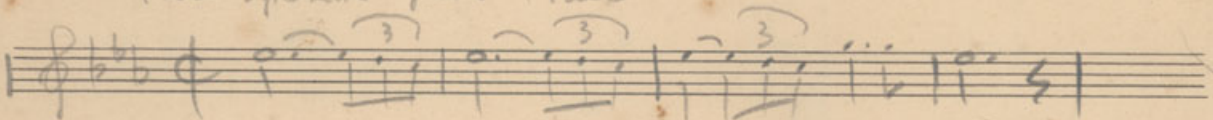
2 Sax Altos Eb



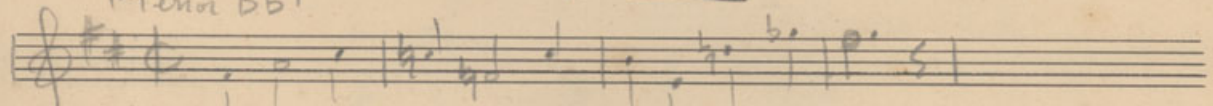
2 Sax tenores Bb



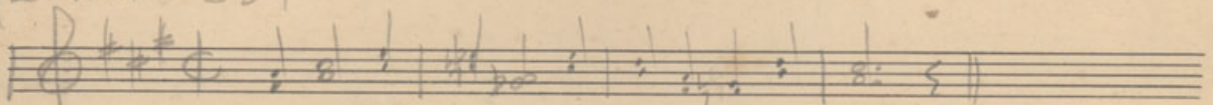
Transpondo para Pina



Tenor Bb



2 Altos Eb



Tenor Bb

