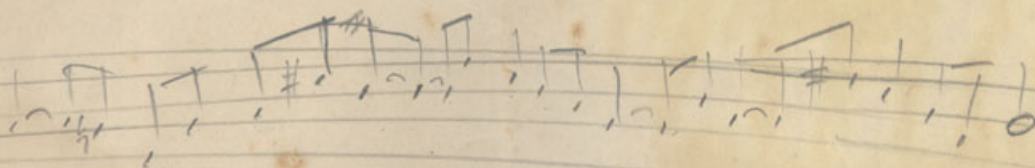


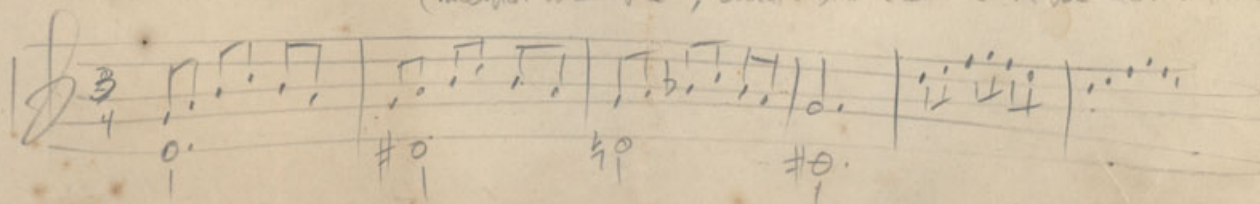
# Escola Brasileiro de Almeida

Rua Almirante Saddock de Sá, 276 }  
Rua Barão da Torre, 107 } Ipanema - Tel. 27-0757

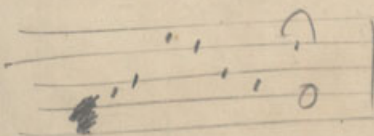
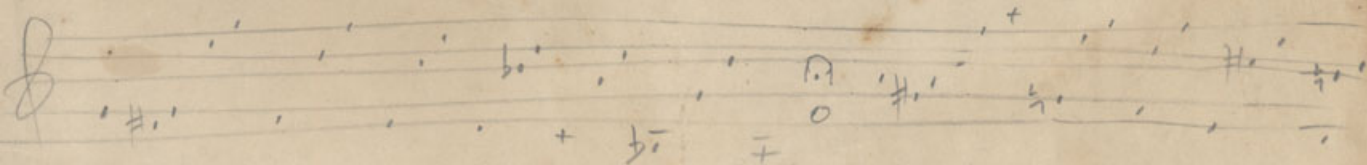


Tema no Poco Fundo

Tema para Samba-carioca ou Valsa  
(melhor samba; cuidado com a Valsa dos Sombrios)



Tema para choro (ou valsa)



Todos ocorridos e Poco Fundo

Handwritten musical notation on a five-line staff, consisting of a sequence of eighth and sixteenth notes.

Handwritten musical notation on a five-line staff, featuring a treble clef and a series of eighth notes with stems pointing downwards.

Handwritten musical notation on a five-line staff, showing a sequence of notes with various accidentals (sharps and naturals).

Handwritten musical notation on a five-line staff, including a sharp sign and a vertical line.

Handwritten musical notation on a five-line staff, consisting of a simple upward-pointing arrow.

Handwritten musical notation on a five-line staff with a treble clef. It includes a bracket labeled "1<sup>o</sup> very" above the first few notes. Below the staff, there are labels "Gamb", "Bbm6", and "Dm".

Handwritten musical notation on a five-line staff. Above the staff, there is a bracket labeled "2<sup>o</sup> very" and the word "tudo". Below the staff, there are labels "G(maior)", "Dm", "G7", "E7", "Gmb", "Dm", "Gmb", and "Dm".

Handwritten musical notation on a five-line staff, showing a few notes with stems pointing downwards. Below the staff, there are labels "Bbm6" and "Dm".