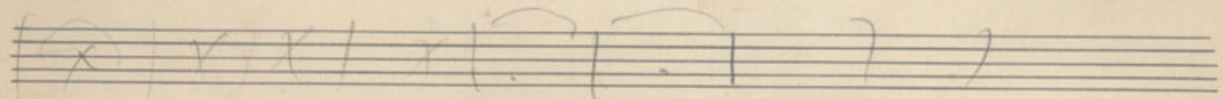
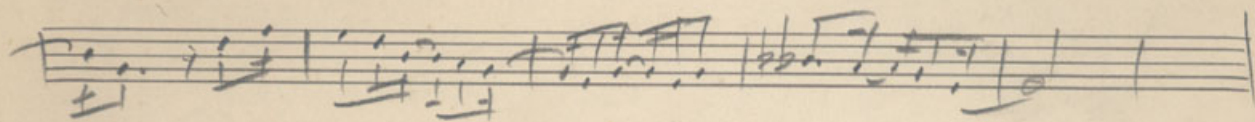
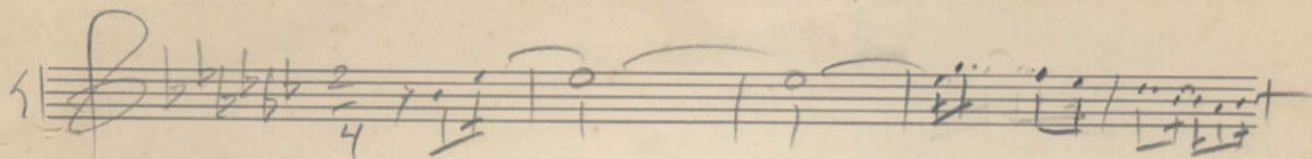
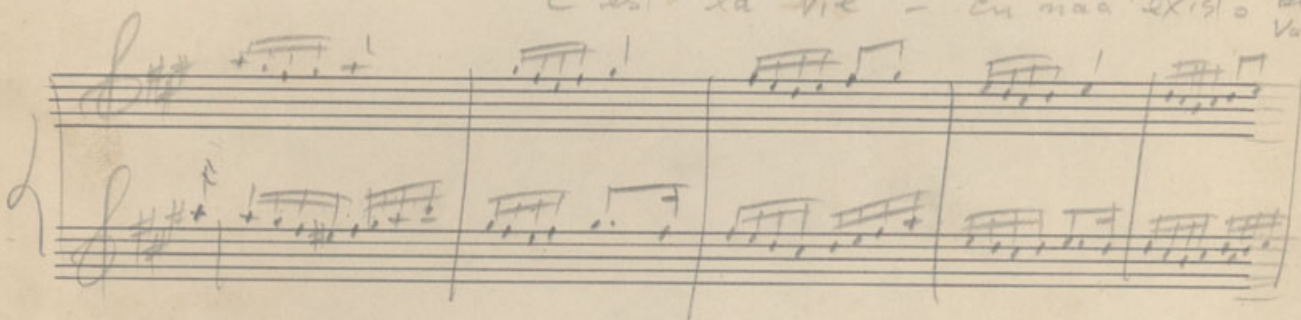


Tema negra (a partes)

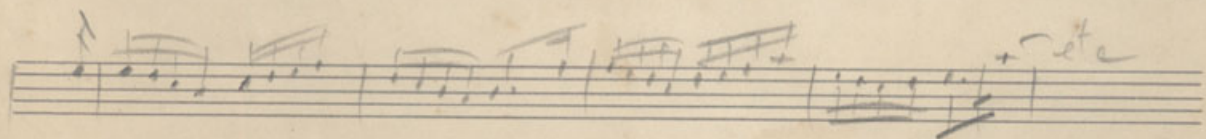


Tarde Demais

C'est la vie - en maa existe au
Você



Haroldo Costa



Alvide Costa

- A) Tarde Demais
- B) Cost la Vie

Cantata Finis de A.C. Jobin

Handwritten musical notation on a single staff. It begins with a treble clef and a key signature of three flats (B-flat, E-flat, A-flat). The notation consists of several groups of notes, some with slurs and accents. Above the notes are markings: "3" with a slur, "3" with a slur, "3 1", and "3 1, 3".

A second staff, mostly blank, with a downward-pointing arrow from the first staff. It contains a few notes at the end of the line, including a triplet of notes with a "3" above them.

A third staff, mostly blank, with a few notes at the end of the line, including a triplet of notes with a "3" above them.

A fourth staff with handwritten musical notation. It features several groups of notes with slurs and accents. Above the notes are markings: "3", "3", "3 1", and "3 1".

A fifth staff, mostly blank, with a few notes at the end of the line, including a triplet of notes with a "3" above them.

A sixth staff with handwritten musical notation. It features several groups of notes with slurs and accents. Above the notes are markings: "3 1" and "3".

A seventh staff, mostly blank.

An eighth staff, mostly blank.

A ninth staff, mostly blank.

A tenth staff, mostly blank.