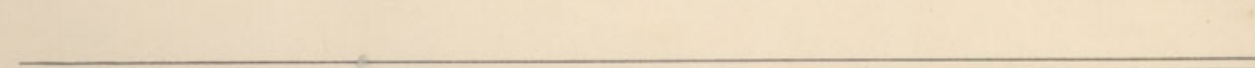
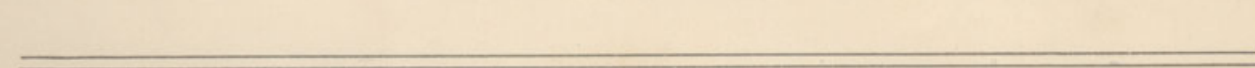
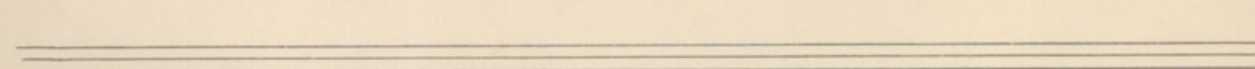
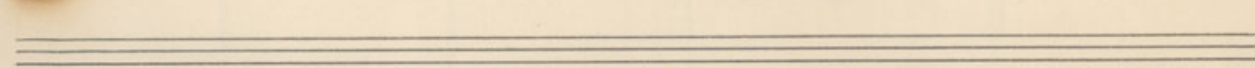
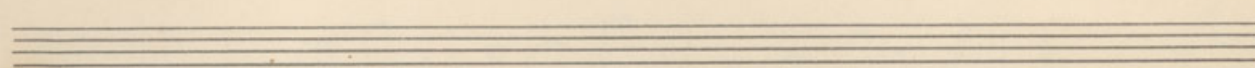
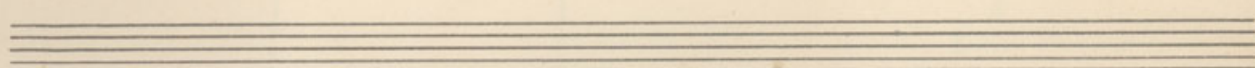
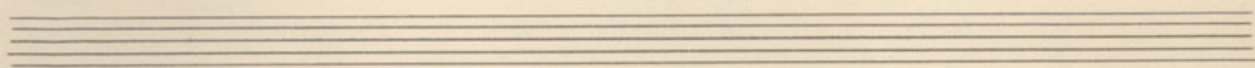
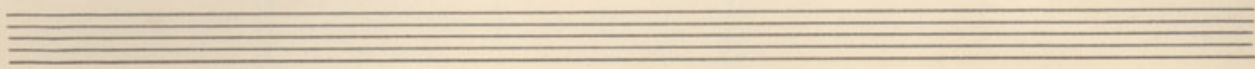


Handwritten musical score on three staves. The top staff is in treble clef with a 6/8 time signature. The middle staff is in treble clef with a key signature of one sharp (F#) and a 6/8 time signature. The bottom staff is in bass clef with a 4/4 time signature. The notation includes various notes, rests, and dynamic markings such as *ff* and *u#*. There are also some handwritten annotations and symbols, including a large hash symbol (#) on the right side of the middle staff.

Ten empty musical staves, each consisting of five horizontal lines, arranged vertically on the page.

Handwritten musical notation on three staves. The first staff begins with a treble clef and a 2/4 time signature. The second staff begins with a bass clef. The third staff begins with a bass clef and contains a double bar line. The notation includes various note values, rests, and dynamic markings. A handwritten "r3" is written above the first staff. The notation is somewhat sketchy and appears to be a student exercise or a draft.



Primavera

Handwritten musical notation for the first system. It consists of two staves: a treble clef staff and a bass clef staff. The time signature is 6/8. The treble staff contains a series of eighth notes and rests, with some notes marked with a '+' sign. The bass staff is mostly empty.

Handwritten musical notation for the second system. The treble staff continues with eighth notes and rests, some marked with '+'. The bass staff has a fermata over a note, followed by a measure with a '+' sign and a measure with a fermata over a note. Above the system, there are markings 'I' and 'II' with horizontal lines indicating spans.

Handwritten musical notation for the third system. The treble staff starts with a measure containing a '+' sign and a fermata, then changes to a 4/4 time signature. It features a series of eighth notes with a slur over them. The bass staff has a 4/4 time signature and a fermata over a note.

Handwritten musical notation for the fourth system. The treble staff begins with a measure containing a '+' sign and a fermata, then changes to a 6/8 time signature. It contains several measures of eighth notes, some marked with '+'. The bass staff is empty.

Five empty musical staves at the bottom of the page, consisting of five sets of five-line staves.