

Latino

Handwritten musical notation in red ink on two staves. The top staff is in treble clef with a 2/4 time signature. It contains several measures of music with eighth and sixteenth notes, some beamed together. The bottom staff is in bass clef and contains similar rhythmic notation. There are some blue ink markings on the second staff.

I in the key of A (Please transpose)

Handwritten musical notation in red ink on a single staff. It starts with a bass clef and a key signature of one flat (Bb). The notation consists of several measures of music with eighth and sixteenth notes, some beamed together.

Handwritten musical notation in black ink on a single staff. It starts with a treble clef and a key signature of three sharps (F#, C#, G#). The notation consists of a single long note with a series of small dots above it, followed by a few more notes.

Tema do Alem II

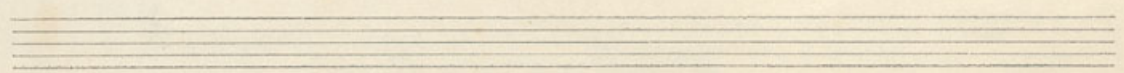
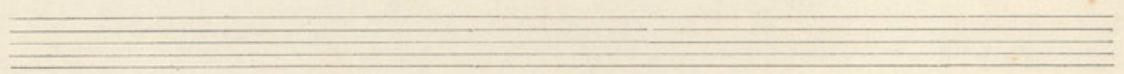
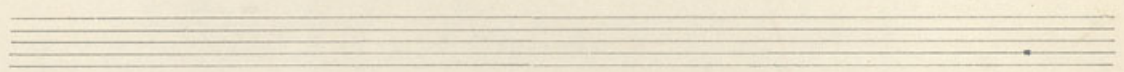
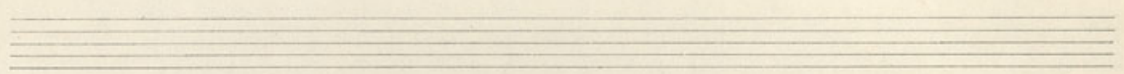
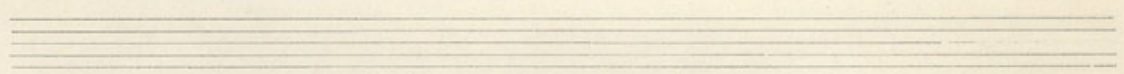
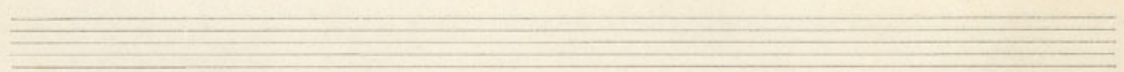
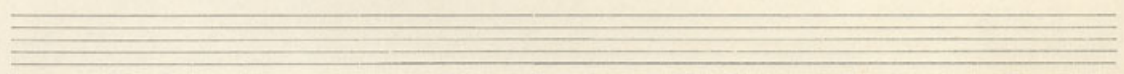
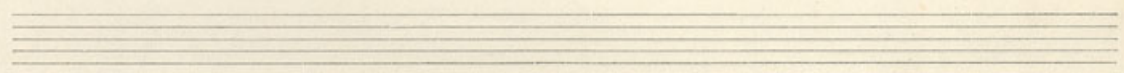
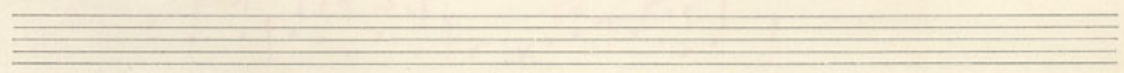
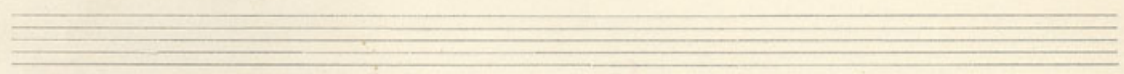
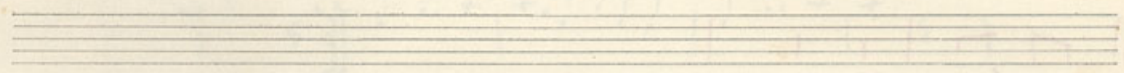
The first system of handwritten musical notation consists of two staves. The top staff is in treble clef with a key signature of two sharps (F# and C#) and a common time signature (C). It contains two measures of music. The first measure starts with a quarter rest, followed by a quarter note G4, an eighth note A4, a quarter note B4, and a quarter note C5. The second measure starts with a quarter note G4, followed by an eighth note A4, a quarter note B4, and a quarter note C5. The bottom staff is in bass clef and contains two measures. The first measure starts with a quarter note G2, followed by a quarter note A2, a quarter note B2, and a quarter note C3. The second measure starts with a quarter note G2, followed by a quarter note A2, a quarter note B2, and a quarter note C3. There are some additional markings, including a '0' below the first measure of the top staff and a '9' below the first measure of the bottom staff.

9

In the key of A (three sharps)
1 2 3 4 5 6 7 8 9 10 11 12

Pisces

Tema do Allen



Tema Sério

