

Choro

A.C. Jobim

Handwritten musical notation for the first system of 'Choro' by A.C. Jobim. It features a treble clef, a key signature of two flats (B-flat and E-flat), and a 2/4 time signature. The melody is written on a single staff with various rhythmic values and accidentals. Below the staff, there are four measures labeled with the numbers 1, 2, 3, and 4, indicating a sequence of notes or chords.

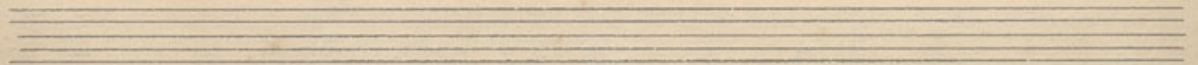
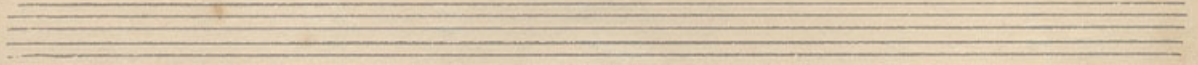
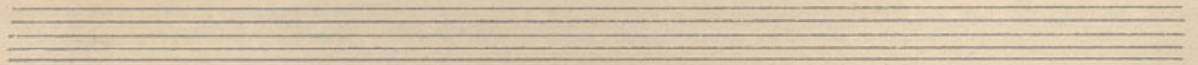
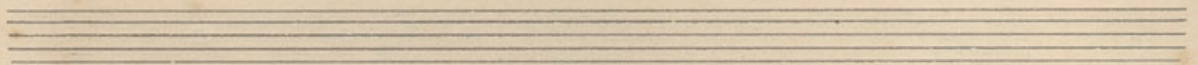
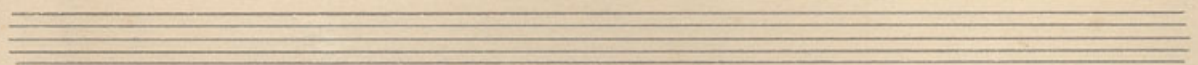
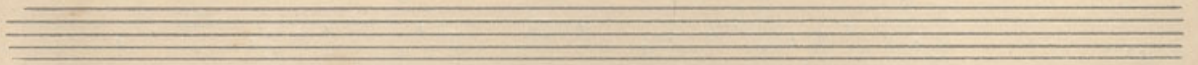
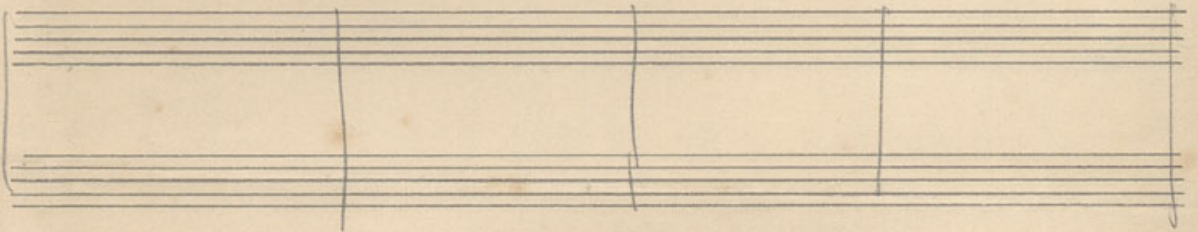
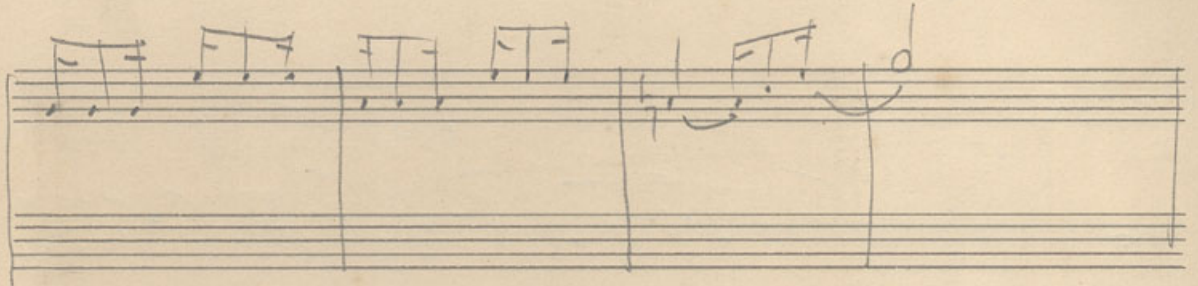
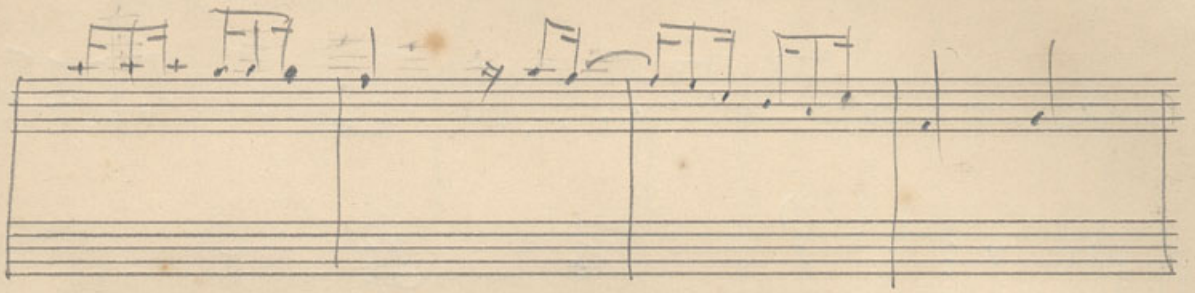
Handwritten musical notation for the second system of 'Choro' by A.C. Jobim. It continues the melody from the first system on a single staff. There are some additional markings below the staff, possibly indicating fingerings or specific chord voicings.

Handwritten musical notation for the third system of 'Choro' by A.C. Jobim. It continues the melody on a single staff.

Handwritten musical notation for the fourth system of 'Choro' by A.C. Jobim. It continues the melody on a single staff. There are some markings below the staff, including a 'b+' symbol.

Handwritten musical notation for the fifth system of 'Choro' by A.C. Jobim. It continues the melody on a single staff. There are some markings below the staff, including a 'b+' symbol.

Handwritten musical notation for the sixth system of 'Choro' by A.C. Jobim. It continues the melody on a single staff. There are some markings below the staff, including a '3' and 'oll'.



Para Mary Gonçalves *Françesinha* Não tem importância Hekel Tav.

canto

importancia

piano

5 7 8

9 10 11 12

13 14 15

A7 Bb Bdim F

dim

Handwritten musical notation on a page with ten staves. The first staff contains a melodic line with eighth and quarter notes. The second and third staves show chordal accompaniment with vertical stems and circles. The fourth staff contains a bass line with notes and rests. The fifth staff has a treble clef and a key signature of two flats, followed by a melodic line with various note values and rests.