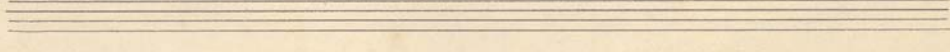
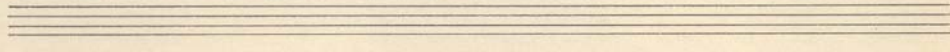
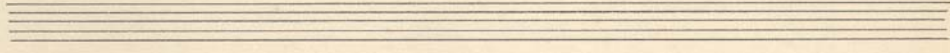
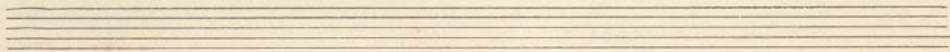
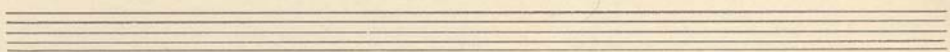
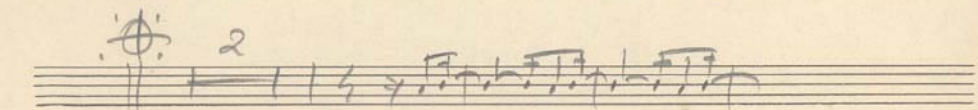
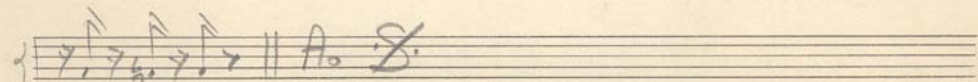
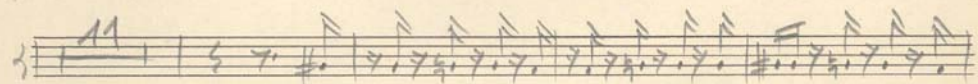
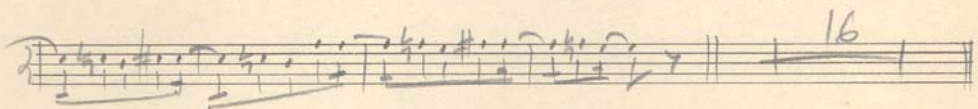
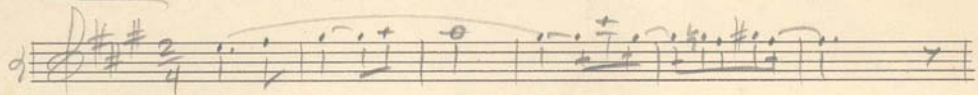


Flauta

Coisa mais linda



Trampa

Coisa mais linda

Musical notation on a single staff with a treble clef and a 2/4 time signature. The staff contains several measures with rests and bar lines. Above the staff, the numbers 16, 16, 8, 10, and 26 are written. Below the staff, there are handwritten annotations: "1+2 viol" under the 8-measure rest and "12+14 violamos" under the 26-measure rest.

Musical notation on a single staff with a treble clef. It features a melodic line with eighth and sixteenth notes, including a triplet of eighth notes marked with a bracket and the number 3.

Musical notation on a single staff with a treble clef. It continues the melodic line with eighth and sixteenth notes, ending with a four-measure rest marked with the number 4.

Musical notation on a single staff with a treble clef. It begins with a double bar line and a fermata, followed by the word "Tacet" written across the staff.

Eight empty musical staves, each consisting of five horizontal lines, arranged vertically on the page.

1º Violino

Cosa mais linda

Handwritten musical score for Violin I, titled "Cosa mais linda". The score consists of six staves. The first staff is in treble clef with a key signature of two sharps (F# and C#) and a 4/4 time signature. It contains two measures of rests, each marked "16", followed by a measure with a fermata and a "3" above it. The second staff is in bass clef with a 4/4 time signature, starting with a "V" and "n" above the first note, followed by a measure with a fermata and a "12" above it. The third staff is in treble clef with a 4/4 time signature, featuring a melodic line with slurs and accents. The fourth staff is in bass clef with a 4/4 time signature, featuring a rhythmic accompaniment with slurs and accents, and a "3" above a group of notes. The fifth staff is in treble clef with a 4/4 time signature, featuring a melodic line with slurs and accents, and a "3" above a group of notes. The sixth staff is in bass clef with a 4/4 time signature, featuring a rhythmic accompaniment with slurs and accents. The score ends with a double bar line and a "3" above it.

Seven empty musical staves for the Violin I part.

2º violino

Aria mais linda

Handwritten musical notation for the first staff of the 2nd violin part. The key signature is two sharps (F# and C#), and the time signature is 3/4. The staff contains several measures of music, including a measure with a fermata and a measure with a triplet. Dynamic markings include *16*, *f*, and *v*. A circled '3' indicates a triplet.

Handwritten musical notation for the second staff of the 2nd violin part. It begins with a treble clef and a common time signature (C). The staff contains several measures of music with dynamic markings *n* and *v*. A circled '3' indicates a triplet.

Handwritten musical notation for the third staff of the 2nd violin part. The staff contains several measures of music with dynamic markings *n* and *v*.

Handwritten musical notation for the fourth staff of the 2nd violin part. The staff contains several measures of music with dynamic markings *n* and *v*. A circled '3' indicates a triplet.

Handwritten musical notation for the fifth staff of the 2nd violin part. The staff contains several measures of music with dynamic markings *n* and *v*. A circled '3' indicates a triplet. The staff ends with a double bar line and the marking *Al. S.*

Handwritten musical notation for the sixth staff of the 2nd violin part. It begins with a treble clef and a common time signature (C). The staff contains several measures of music with dynamic markings *n* and *v*.

Empty musical staff.

Empty musical staff.

Empty musical staff.

Empty musical staff.

Empty musical staff.

Empty musical staff.