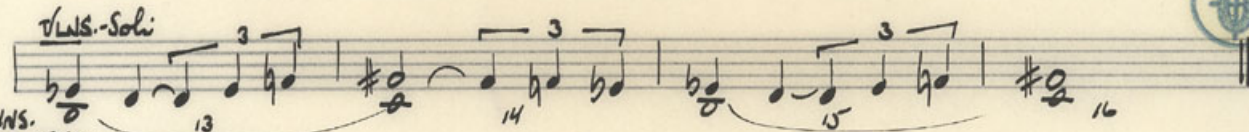
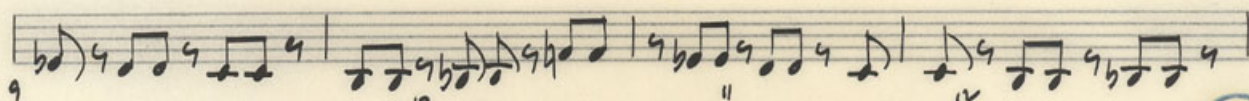
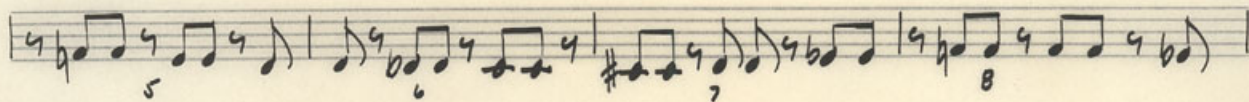
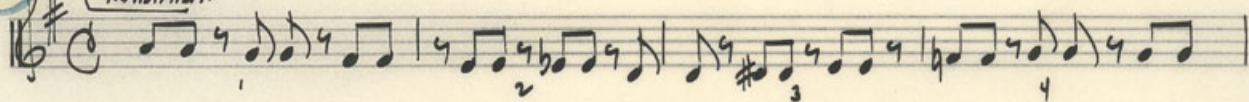


SURFBOARD

2 = :03

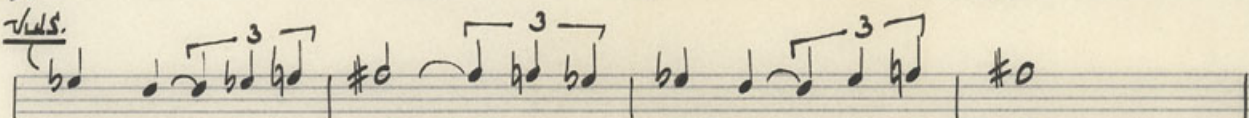
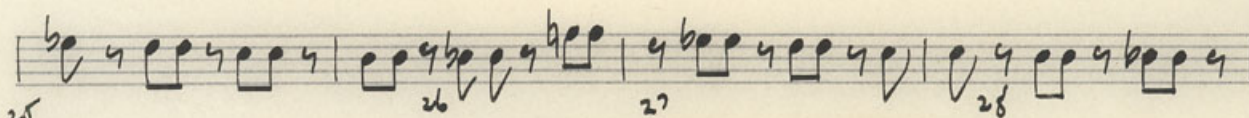
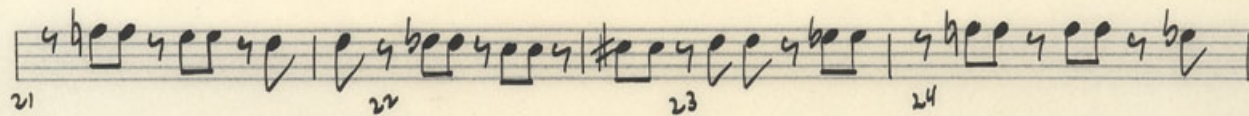
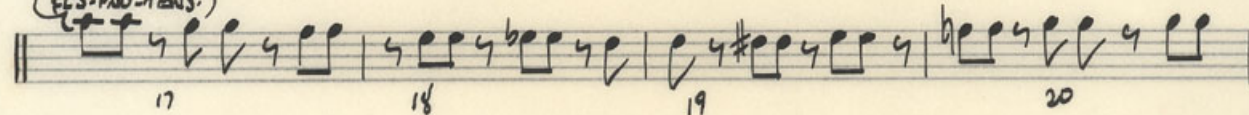


(TENS-CUPS)
MARIMBA.



HNS.
VLA-BELLO.

(Fl's-PNO-TENS.)



HNS. σ
VLA-BELLO.

Handwritten musical notation for measures 33-36. Includes a circled "Vols." annotation above the staff and a "Cello." label to the left. The notes are marked with measure numbers 33, 34, 35, and 36.

Handwritten musical notation for measures 37-40. Includes a "Vln." label to the left of the staff. The notes are marked with measure numbers 37, 38, 39, and 40.

Handwritten musical notation for measures 41-44. Includes a "Cello." label to the left and a circled "HNS" annotation above the staff. The notes are marked with measure numbers 41, 42, 43, and 44.

Handwritten musical notation for measures 45-48. Includes a "Vln." label to the left of the staff. The notes are marked with measure numbers 45, 46, 47, and 48.

Handwritten musical notation for measures 49-52. Includes a circled "FLS. PNO." annotation above the staff and a "Guit." label to the left. The notes are marked with measure numbers 49, 50, 51, and 52.

Handwritten musical notation for measures 53-56. The notes are marked with measure numbers 53, 54, 55, and 56.

Handwritten musical notation for measures 57-60. Includes a circled "HNS" annotation above the staff. The notes are marked with measure numbers 57, 58, 59, and 60.

Handwritten musical notation for measures 61-64. Includes a circled "SWS" annotation above the staff and a "DC" (Da Capo) symbol at the end. The notes are marked with measure numbers 61, 62, 63, and 64.

Empty musical staff lines.

Empty musical staff lines.



(VLS.)

CELO

65

HWS

66

68

69

70

71

72

CELO.

73

+HWS.

74

75

76

FL'S. PNO.

HWS-TRANS.

77

78

STBS.

79

80

(VLS.)

81

82

83

84

HWS VIA CELLO.

85

86

87

88

TRANS (cup)

89

90

91

92

REPEAT & FADE

93

94

Empty musical staves.