

↙ E

Você vai ver você vai implorar me pedir pra voltar

ficar  
e eu vou dizer q ja  
vai

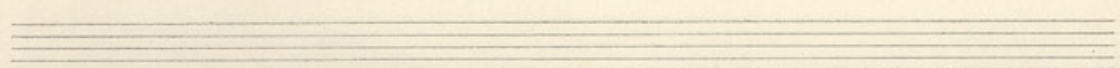
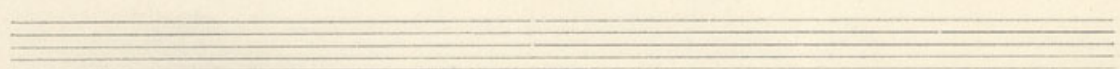
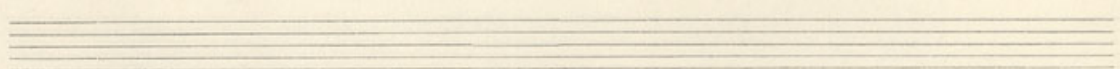
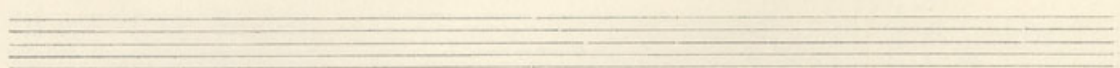
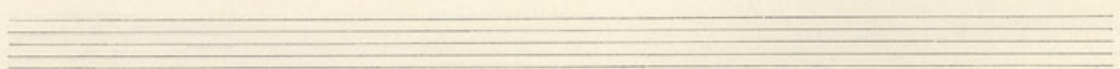
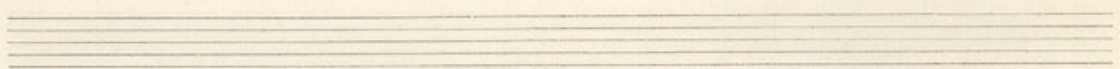
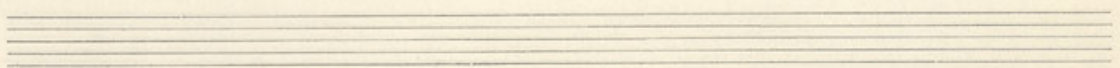
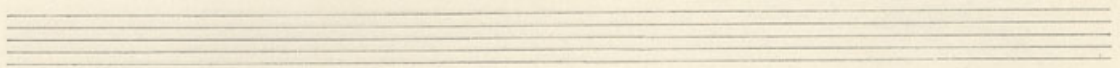
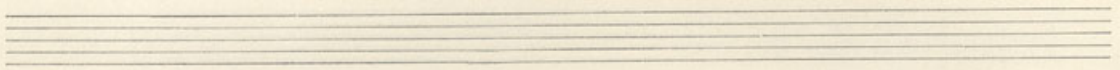
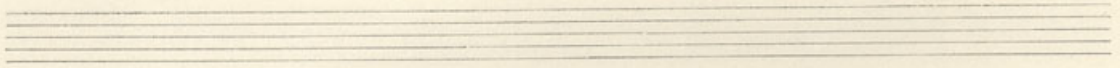
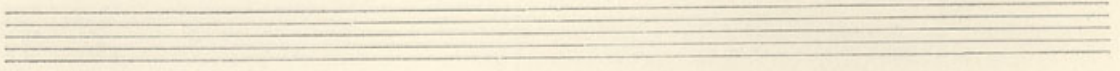
Handwritten musical notation for the first system, including a treble clef, key signature of three flats, and a 2/4 time signature. The melody consists of several measures with eighth and sixteenth notes, some beamed together.

Handwritten musical notation for the second system, featuring a treble clef, a key signature of three sharps, and a 2/4 time signature. Chord symbols are written below the notes: C#m, Am, G#, G7, C7+, F, and F.

Handwritten musical notation on a five-line staff. It begins with a treble clef, a key signature of three sharps (F#, C#, G#), and a common time signature (C). The notation consists of a series of eighth notes with stems, some of which are beamed together. The notes are: F#4, C#5, G#5, F#5, E5, D5, C5, B4, A4, G4, F#4. There are vertical bar lines after the first, second, and third measures, and a double bar line at the end.

Handwritten musical notation on a five-line staff. It begins with a treble clef. The notation consists of a series of eighth notes with stems, some of which are beamed together. The notes are: F#4, C#5, G#5, F#5, E5, D5, C5, B4, A4, G4, F#4. There are vertical bar lines after the first, second, and third measures, and a double bar line at the end.

# Spring



Spring

Vai pra mi