

Sucedeu Assim

Samba - canção

Antonio Carlos Jobim

e

Marino Pinto

Canta: Vanja Orico

1-2 fl *no 2^a fl*

Acord.

D (som real)

Drum (som real)

Piano

Guit

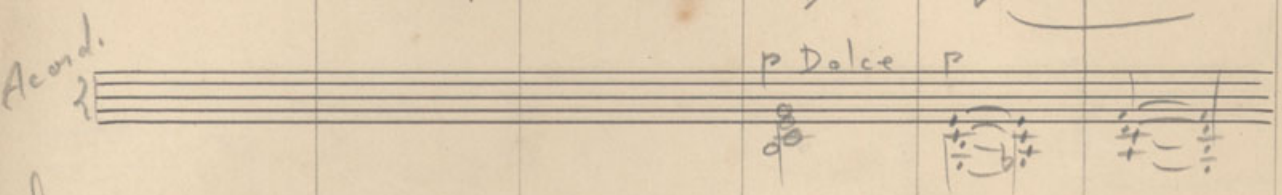
Basso

Cant

1-2



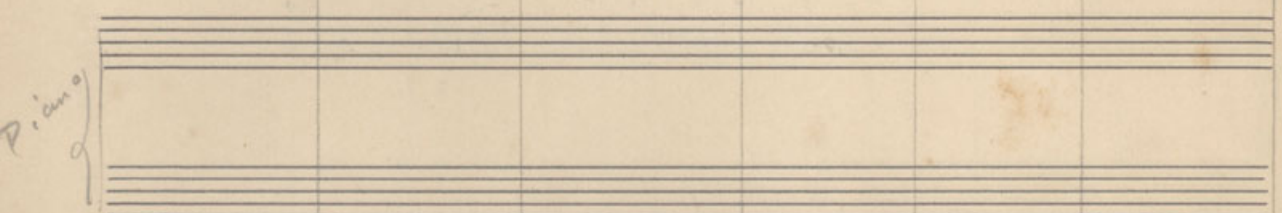
Acordi.



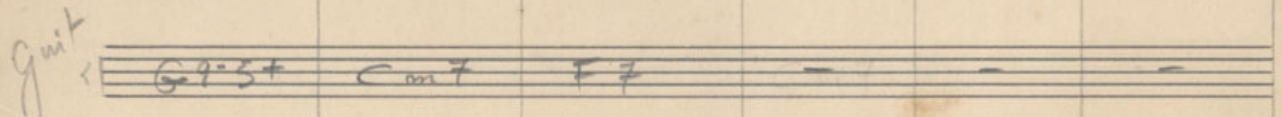
Clarinete



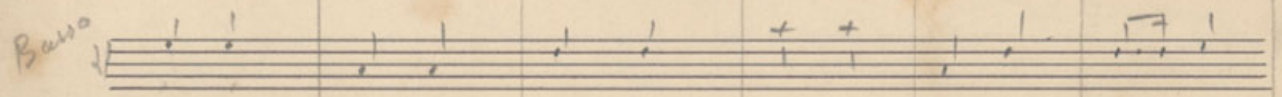
Piano



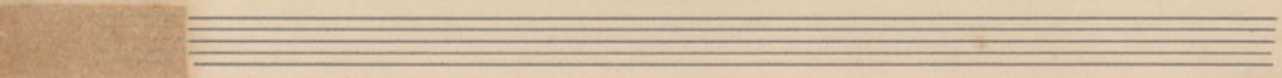
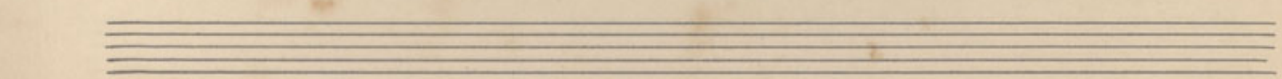
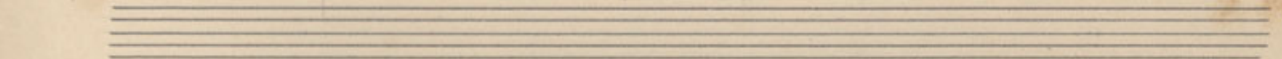
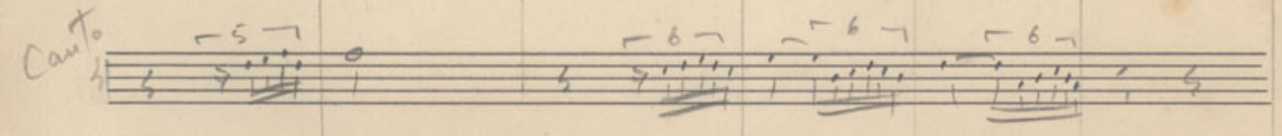
Guit



Basso



Canto



Flute

1-2 *ff*

Acord

d

Caracol

Piano

Guit

Cm7 G957 Cm7 F7

Basso

Canto

1-2 *f*

Acord

Sarone

Piano

Guit

Basso

Canto

1^a e 2^a fl

1-2 *ff*

Acordal

cl

Clavon

Piano

Guit

Basso

Canta

6 7

Cm7

1-2 *f*

Dalce

Handwritten musical notation on a single staff, starting with a treble clef and a 4/4 time signature. The first measure contains a quarter note G4, a quarter note A4, and a quarter note B4. The second measure contains a quarter note C5, a quarter note B4, and a quarter note A4. The third measure contains a quarter note G4, a quarter note F4, and a quarter note E4. The fourth measure contains a quarter note D4, a quarter note C4, and a quarter note B3. The fifth measure contains a quarter note A3, a quarter note G3, and a quarter note F3. The sixth measure contains a quarter note E3, a quarter note D3, and a quarter note C3. The word "Dalce" is written above the staff in the second measure.

Acordal *f*

Handwritten musical notation on a single staff, starting with a treble clef and a 4/4 time signature. The first measure contains a chord of G4, A4, B4, C5. The second measure contains a chord of B4, A4, G4, F4. The third measure contains a chord of A4, G4, F4, E4. The fourth measure contains a chord of G4, F4, E4, D4. The fifth measure contains a chord of F4, E4, D4, C4. The sixth measure contains a chord of E4, D4, C4, B3. The word "Acordal" is written to the left of the staff.

f

Handwritten musical notation on a single staff, starting with a treble clef and a 4/4 time signature. The first measure contains a quarter note G4, a quarter note A4, and a quarter note B4. The second measure contains a quarter note C5, a quarter note B4, and a quarter note A4. The third measure contains a quarter note G4, a quarter note F4, and a quarter note E4. The fourth measure contains a quarter note D4, a quarter note C4, and a quarter note B3. The fifth measure contains a quarter note A3, a quarter note G3, and a quarter note F3. The sixth measure contains a quarter note E3, a quarter note D3, and a quarter note C3. The dynamic marking "f" is written to the left of the staff.

Clarinete *f*

Handwritten musical notation on a single staff, starting with a treble clef and a 4/4 time signature. The first measure contains a quarter note G4, a quarter note A4, and a quarter note B4. The second measure contains a quarter note C5, a quarter note B4, and a quarter note A4. The third measure contains a quarter note G4, a quarter note F4, and a quarter note E4. The fourth measure contains a quarter note D4, a quarter note C4, and a quarter note B3. The fifth measure contains a quarter note A3, a quarter note G3, and a quarter note F3. The sixth measure contains a quarter note E3, a quarter note D3, and a quarter note C3. The word "Clarinete" is written to the left of the staff.

80 - 77

Piano *f*

Handwritten musical notation on a single staff, starting with a treble clef and a 4/4 time signature. The first measure contains a quarter note G4, a quarter note A4, and a quarter note B4. The second measure contains a quarter note C5, a quarter note B4, and a quarter note A4. The third measure contains a quarter note G4, a quarter note F4, and a quarter note E4. The fourth measure contains a quarter note D4, a quarter note C4, and a quarter note B3. The fifth measure contains a quarter note A3, a quarter note G3, and a quarter note F3. The sixth measure contains a quarter note E3, a quarter note D3, and a quarter note C3. The dynamic marking "f" is written to the left of the staff. The numbers "80 - 77" are written above the staff in the first measure.

Guit *f*

Cm 7

Handwritten musical notation on a single staff, starting with a treble clef and a 4/4 time signature. The first measure contains a chord of C4, B3, A3, G3. The word "Guit" is written to the left of the staff, and "Cm 7" is written below the staff.

Basso *f*

Handwritten musical notation on a single staff, starting with a treble clef and a 4/4 time signature. The first measure contains a quarter note G4, a quarter note A4, and a quarter note B4. The second measure contains a quarter note C5, a quarter note B4, and a quarter note A4. The third measure contains a quarter note G4, a quarter note F4, and a quarter note E4. The fourth measure contains a quarter note D4, a quarter note C4, and a quarter note B3. The fifth measure contains a quarter note A3, a quarter note G3, and a quarter note F3. The sixth measure contains a quarter note E3, a quarter note D3, and a quarter note C3. The word "Basso" is written to the left of the staff.

Canta *f*

Handwritten musical notation on a single staff, starting with a treble clef and a 4/4 time signature. The first measure contains a quarter note G4, a quarter note A4, and a quarter note B4. The second measure contains a quarter note C5, a quarter note B4, and a quarter note A4. The third measure contains a quarter note G4, a quarter note F4, and a quarter note E4. The fourth measure contains a quarter note D4, a quarter note C4, and a quarter note B3. The fifth measure contains a quarter note A3, a quarter note G3, and a quarter note F3. The sixth measure contains a quarter note E3, a quarter note D3, and a quarter note C3. The dynamic marking "f" is written to the left of the staff. The numbers "6 7" are written above the staff in the third and fourth measures.

Empty musical staff.

Empty musical staff.

Empty musical staff.

1-2
8.



Acorn
8.

Solo

8.

8.

Piano

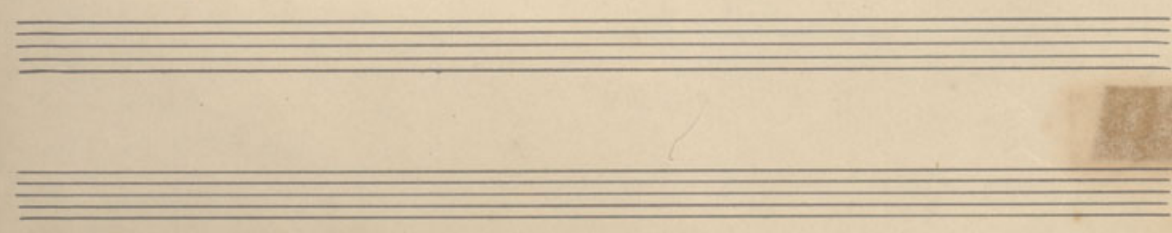


Guit

Basso

8.

8.



1-2 $\frac{2}{4}$

Handwritten musical notation for the first staff, showing a 2/4 time signature and rhythmic markings.

Acord

Handwritten musical notation for the second staff, labeled "Acord", showing chordal structures.

cl

Handwritten musical notation for the third staff, labeled "cl", showing notes and rests.

Corona

Handwritten musical notation for the fourth staff, labeled "Corona", showing notes and rests.

Piano

m.o.
8^a alta

m.o.
8^a bassa

Handwritten musical notation for the fifth staff, labeled "Piano", with annotations "m.o. 8ª alta" and "m.o. 8ª bassa".

Guit

Handwritten musical notation for the sixth staff, labeled "Guit", showing chord symbols G75+, F#7, and G75+S.

Basso

Pausa

Handwritten musical notation for the seventh staff, labeled "Basso", with an annotation "Pausa" pointing to a rest.

Canto

Handwritten musical notation for the eighth staff, labeled "Canto", which is mostly empty.

Three empty musical staves at the bottom of the page.

1-2 *ff*

Handwritten notes: *so' 2^a fl* with a downward arrow. *ff* dynamic. *Fl. 1 & 2* at the end of the staff.

Acornal

Handwritten notes: *ff* dynamic.

P

Handwritten notes: *ff* dynamic.

Clarinet

Handwritten notes: *ff* dynamic.

Piano

Handwritten notes: *ff* dynamic. *Fl. 1 & 2* at the end of the staff.

Guit

Handwritten notes: *ff* dynamic. Chords: *Ebb D7*.

Basso

Handwritten notes: *ff* dynamic.

Canto

Handwritten notes: *ff* dynamic. *Fl. 1 & 2* at the end of the staff.

1^a e 2^a fl

Acord

S

Canone

Piano

Guit

Basso

Canza