

Handwritten musical notation on two staves. The first staff begins with a treble clef, a key signature of two flats (B-flat and E-flat), and a 2/4 time signature. The first two measures are heavily scribbled over with dark ink, with the numbers "813" and "97" visible through the ink. The rest of the staff contains a series of rhythmic notes, including eighth and sixteenth notes, with stems pointing upwards. The second staff continues the musical notation with similar rhythmic patterns.

A single staff of musical notation containing a few notes at the beginning, followed by a large blank space.

A blank musical staff.

A blank musical staff.

A blank musical staff.

A blank musical staff.

A blank musical staff.

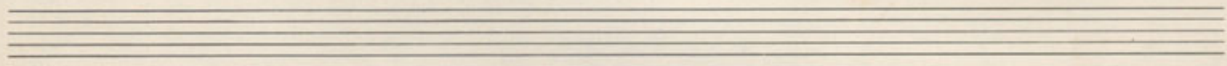
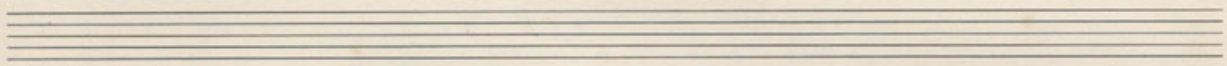
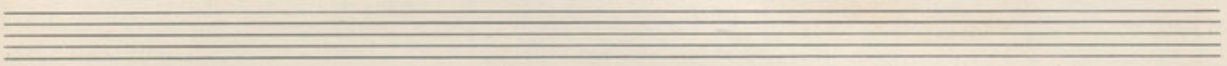
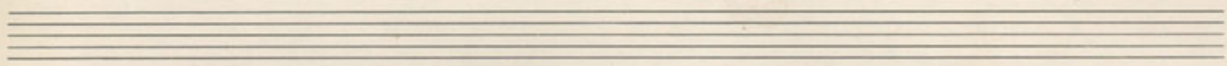
A blank musical staff.

A blank musical staff.

A blank musical staff.

A blank musical staff.

Handwritten musical notation on a single staff. The notation includes a treble clef, a key signature of two flats (B-flat and E-flat), and a common time signature (C). The melody consists of several measures of music with various note values and rests. Below the staff, the following chord symbols are written: Eb Ebm7 Bbm Eb Ebm7 Bbm.



Handwritten musical notation on a single staff. The notation includes a treble clef, a key signature of two sharps (F-sharp and C-sharp), and a common time signature (C). The melody consists of several measures of music with various note values and rests.

Handwritten musical notation on a single staff. The notation includes a treble clef, a key signature of two sharps (F-sharp and C-sharp), and a common time signature (C). The notation features a complex rhythmic pattern with many beamed notes and rests.

