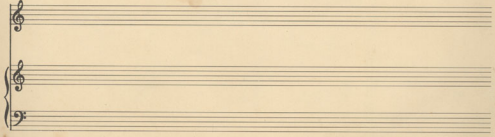
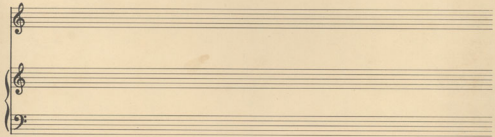
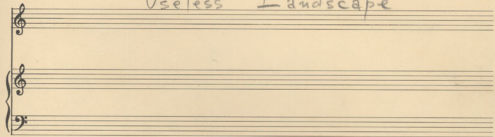


Useless Landscape



Useless Landscape
City Vista

700 hrs
(12.03)

Voic

Handwritten musical score for the first system. The vocal line (treble clef) begins with a whole note chord in B-flat major. The piano accompaniment (grand staff) features a complex texture with many accidentals and dynamic markings like 'pp' and 'ppp'. The key signature has two flats (B-flat major or D-flat minor).

Handwritten musical score for the second system. The piano part continues with intricate chordal textures and dynamic markings. The vocal part (treble clef) has a melodic line with some triplet markings. There are several circled notes and handwritten annotations throughout the system.

Handwritten musical score for the third system. The piano accompaniment (grand staff) shows a continuation of the complex harmonic language. The vocal line (treble clef) has a melodic phrase with some triplet markings. There are various dynamic markings and accidentals.

Orch. Solo Flugel or Trb or Trumpet?

Handwritten musical score for the fourth system. It includes an orchestral solo part (treble clef) with a melodic line, possibly for Flugelhorn, Trumpet, or Trombone. The piano accompaniment (grand staff) continues with complex textures. There are dynamic markings like 'pp' and 'ppp'.

Handwritten musical score, first system. Includes treble and bass clefs, notes, and a "Voice" label with an arrow pointing to the treble staff. A key signature of one flat is indicated by a flat symbol on the treble staff. The notation includes various rhythmic values and accidentals.

Handwritten musical score, second system. Includes treble and bass clefs. Annotations include "B7b5" and "Bb maj 7". A "Capp" (Cappella) marking is present below the bass staff. The notation includes notes, rests, and accidentals.

Handwritten musical score, third system. Includes treble and bass clefs. The notation is sparse, consisting of a few notes and rests in the treble staff, with the bass staff mostly empty.

Handwritten musical score, fourth system. Includes treble and bass clefs. The notation is sparse, consisting of a few notes and rests in the treble staff, with the bass staff mostly empty.