

Handwritten musical notation on a single staff, featuring a treble clef, a key signature of three flats (B-flat, E-flat, A-flat), and a 4/4 time signature. The notation includes a whole rest followed by several measures of eighth and sixteenth notes, ending with a whole note.

Handwritten musical notation on a single staff, continuing the piece with eighth and sixteenth notes and some accidentals.

Handwritten musical notation on a single staff, featuring a whole note followed by eighth notes and a final whole note.

Handwritten musical notation on a single staff, consisting of a series of dotted lines and a plus sign, possibly representing a specific rhythmic pattern or a placeholder.

Handwritten musical notation on a single staff, starting with a treble clef and a key signature of three flats, followed by a vertical bar line.

Handwritten musical notation on a single staff, featuring a treble clef, a key signature of three flats, and a 2/4 time signature. It includes quarter notes with stems and beams, and some accidentals.

Handwritten musical notation on a single staff, featuring a treble clef, a key signature of three flats, and a 2/4 time signature. It includes quarter notes with stems and beams, and some accidentals. The word "on" is written below the staff.

Handwritten musical notation on a single staff, featuring a treble clef, a key signature of three flats, and a 2/4 time signature. It includes quarter notes with stems and beams, and some accidentals.

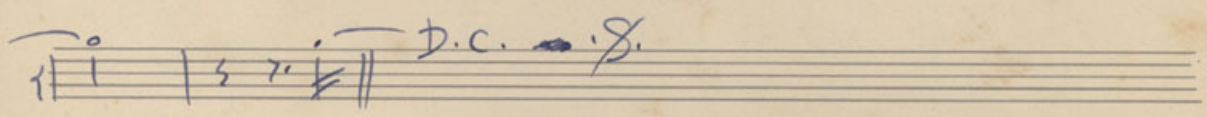
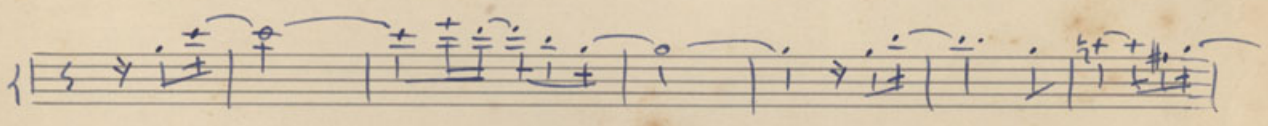
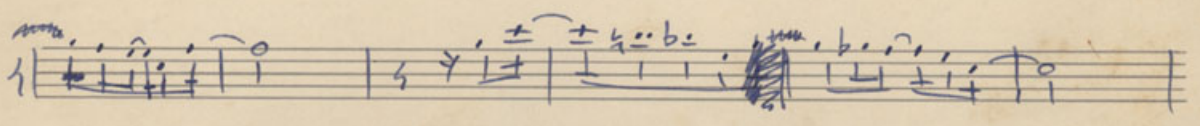
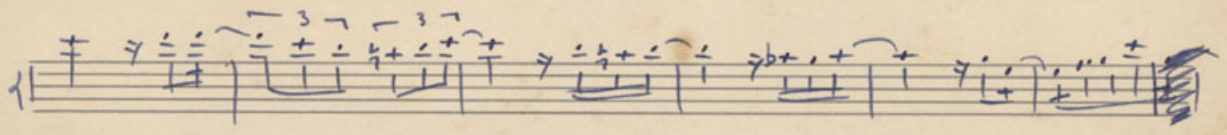
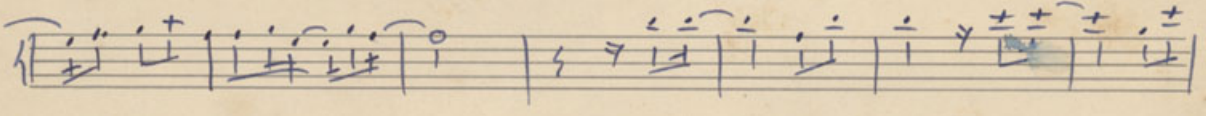
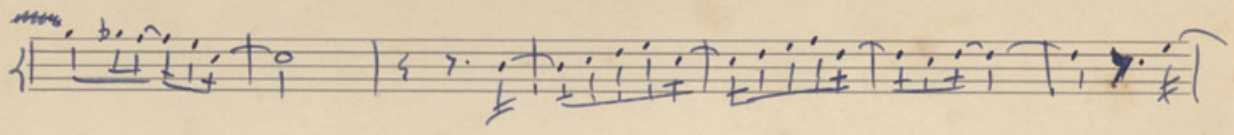
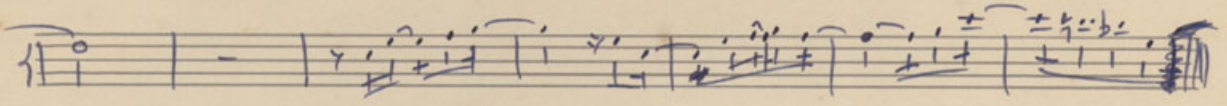
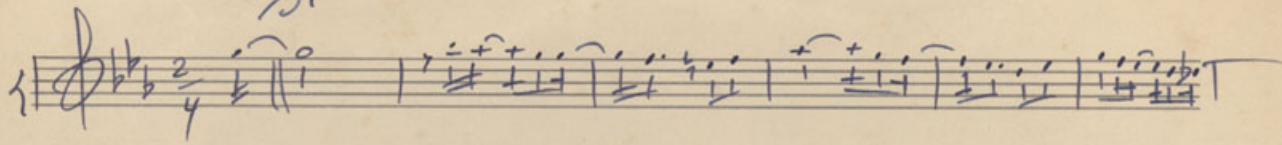
Handwritten musical notation on a single staff, consisting of a series of horizontal lines, possibly representing a specific rhythmic pattern or a placeholder.

Handwritten musical notation on a single staff, consisting of a series of horizontal lines, possibly representing a specific rhythmic pattern or a placeholder.

Handwritten musical notation on a single staff, consisting of a series of horizontal lines, possibly representing a specific rhythmic pattern or a placeholder.

Handwritten musical notation on a single staff, consisting of a series of horizontal lines, possibly representing a specific rhythmic pattern or a placeholder.

.8.



360
4%

14.90

14.40

3.000

43.2000

14.000

3

42