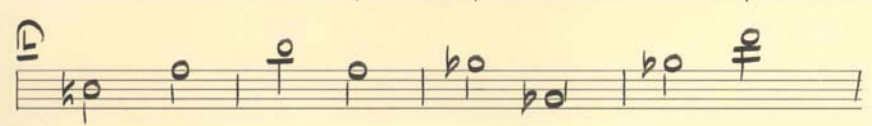
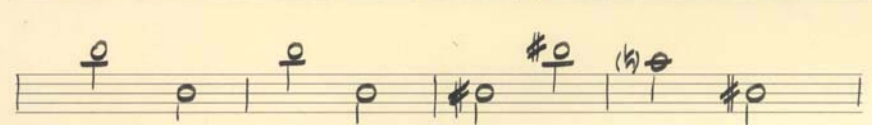
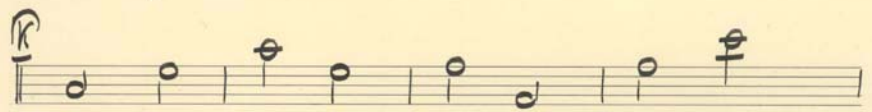
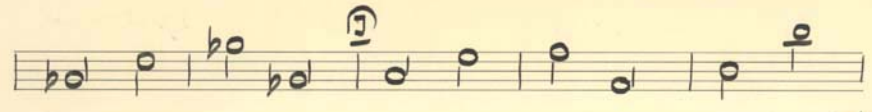
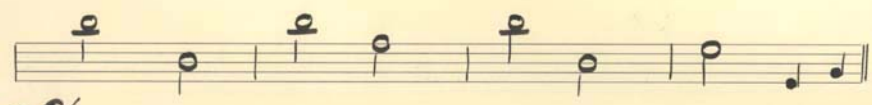
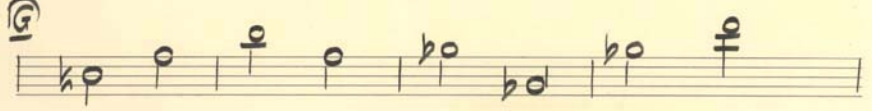
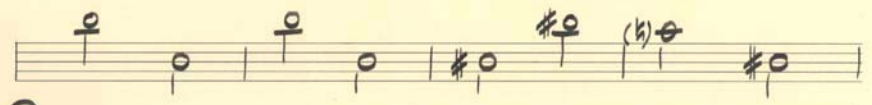


Bass

# "BONITA"

BASSA NOVA  
pizz.



*al. f.*  
D.S.  
al. f.

Handwritten musical notation on a ten-staff page. The notation is written on the second and third staves. The second staff begins with a treble clef, a common time signature (C), and a first ending bracket (M). The notes are: quarter note G4, quarter note A4, quarter note B4, quarter note C5, quarter note B4, quarter note A4, quarter note G4. The third staff begins with a bass clef and contains notes: quarter note F3, quarter note G3, quarter note A3, quarter note B3, quarter note C4, quarter note B3, quarter note A3, quarter note G3. The notation ends with a double bar line and repeat dots on the third staff.

*repeat al fade*