

Alfa

6/8 (3/4)

Handwritten musical score for the first system, consisting of four staves. The first staff begins with a treble clef and a key signature of one flat. The music features a complex rhythmic pattern with many beamed eighth and sixteenth notes. The second staff contains some crossed-out passages. The third and fourth staves continue the melodic line with similar rhythmic density.

Five empty musical staves, providing space for further notation.

Handwritten musical score for the second system, consisting of one staff. It starts with a treble clef and a key signature of one flat. The notation includes various note values and rests, ending with a double bar line and a 2/4 time signature.

Rio do la noisio Rio

Handwritten musical score for the third system, consisting of one staff. It begins with a treble clef and a key signature of one flat. The lyrics "Rio do la noisio Rio" are written above the notes. The staff contains several measures of music with beamed notes and rests, ending with a double bar line.

Five empty musical staves, providing space for further notation.

Handwritten musical notation on two staves. The top staff is in treble clef with a 3/4 time signature and a key signature of one flat. It contains a melodic line with eighth and sixteenth notes. The bottom staff is in bass clef and contains a bass line with similar rhythmic patterns.

Handwritten musical notation on a single staff in treble clef, continuing the melodic line from the previous section.

Handwritten musical notation on a single staff in treble clef, continuing the melodic line.

Handwritten musical notation on a single staff in bass clef, continuing the bass line.

Handwritten musical notation on a single staff in treble clef, including chord symbols below the notes: G13, C5+7, F#7, and F#7.

Alfa II

Handwritten musical notation on a single staff, featuring a treble clef, a key signature of two flats, and a 3/4 time signature. The notation consists of a series of eighth and sixteenth notes, some beamed together, with a fermata over the final note.

Handwritten musical notation on a single staff, featuring a bass clef, a common time signature, and a 4/4 time signature. The notation includes eighth notes, quarter notes, and a half note, with various rests and phrasing slurs.

Handwritten musical notation on a single staff, featuring a bass clef and a 3/4 time signature. The notation includes eighth notes, quarter notes, and a half note, with various rests and phrasing slurs.

Handwritten musical notation on a single staff, featuring a treble clef and a common time signature. The notation consists of a few eighth notes followed by a rest.

A blank musical staff with a treble clef.

A blank musical staff with a treble clef.

A blank musical staff with a treble clef.

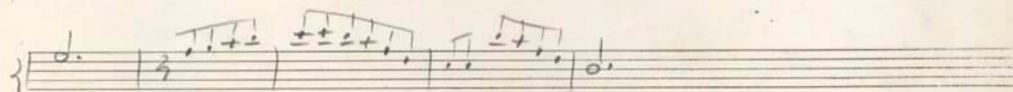
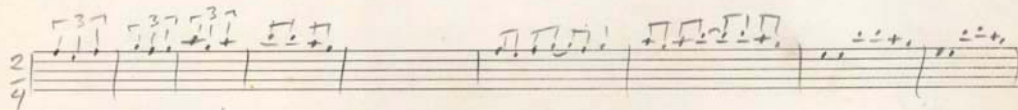
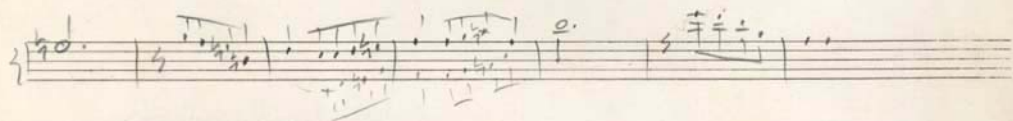
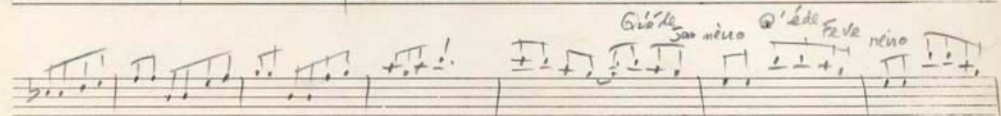
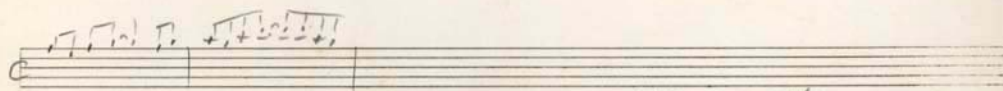
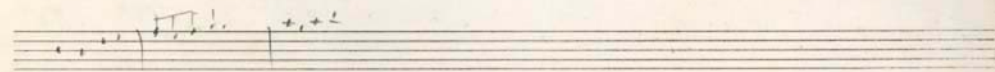
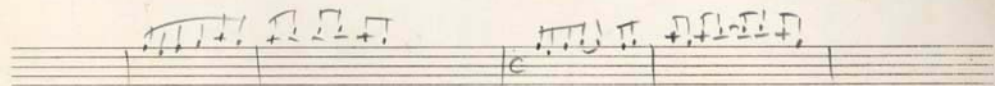
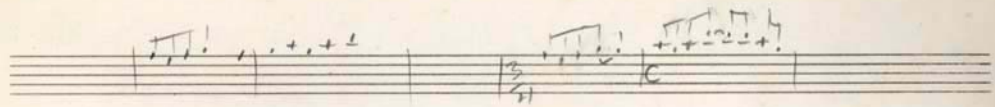
A blank musical staff with a treble clef.

A blank musical staff with a treble clef.

A blank musical staff with a treble clef.

Handwritten musical notation on a single staff, featuring a bass clef, a key signature of two flats, and a 3/4 time signature. The notation includes eighth notes, quarter notes, and a half note, with various rests and phrasing slurs.

A blank musical staff with a bass clef.



Opção I

3/4
2

4

3/4
2

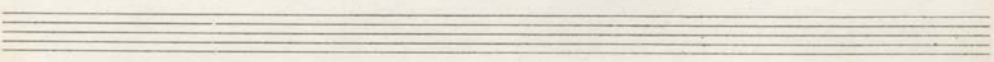
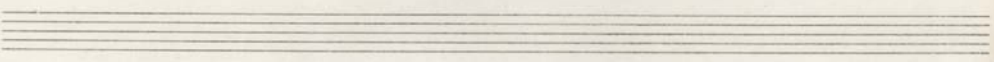
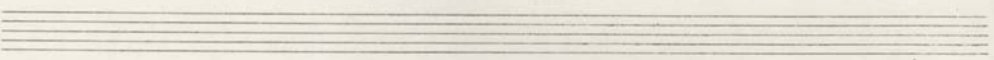
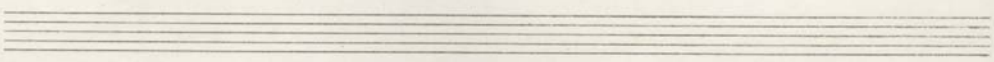
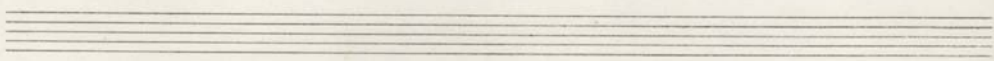
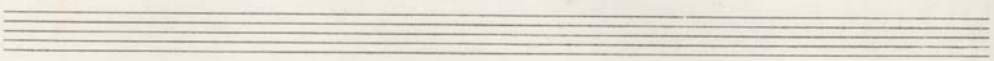
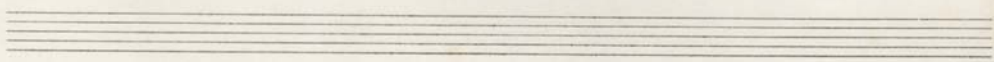
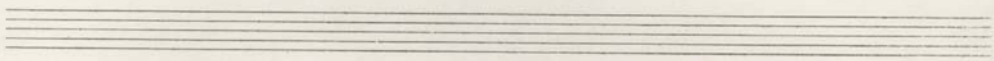
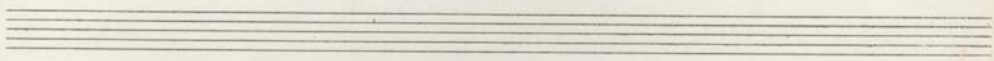
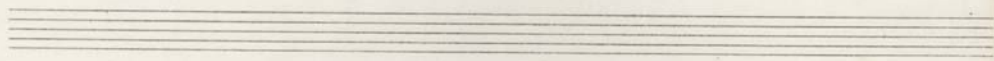
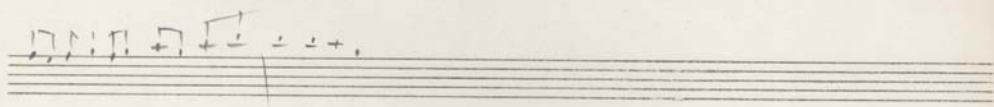
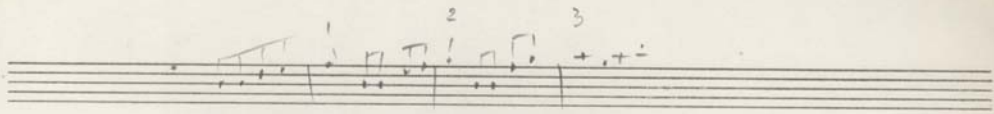
4

3/4
2

4

Opção II

4



Handwritten musical notation on three staves. The first staff begins with a treble clef and a key signature of two flats. The notation includes various rhythmic values such as eighth and sixteenth notes, often beamed together. The second and third staves continue the piece, featuring similar rhythmic patterns and some rests. The notation is written in dark ink on aged paper.

Ten blank musical staves, each consisting of five horizontal lines, arranged vertically below the first three staves. These staves are completely empty and serve as a template for further musical notation.