

# Detalle de mi Lá

Handwritten musical notation on a single staff. The notation includes a treble clef, a key signature of one sharp (F#), and a 3/4 time signature. The melody consists of several measures of music with various note values and rests. Above the staff, there are handwritten annotations: "on" with a downward-pointing arrow, "F#" with an upward-pointing arrow, and "etc" at the end of the staff.

Handwritten musical notation on a single staff, continuing the piece. It features a treble clef, a key signature of one sharp (F#), and a 3/4 time signature. The notation includes a whole note followed by a half note and a quarter note.

Empty musical staff.

Empty musical staff.

Empty musical staff.

Empty musical staff.

Empty musical staff.

Empty musical staff.

Empty musical staff.

Empty musical staff.

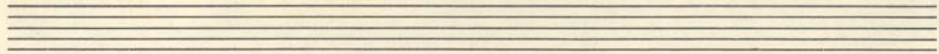
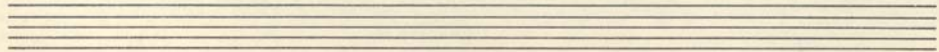
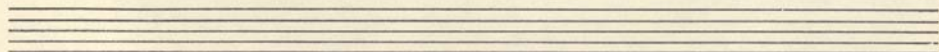
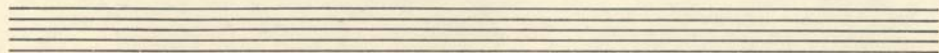
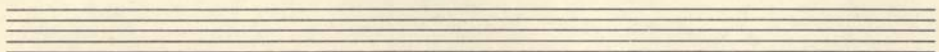
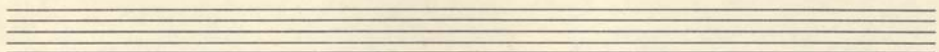
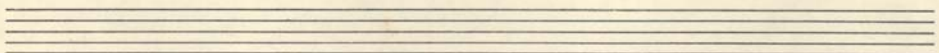
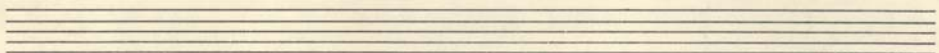
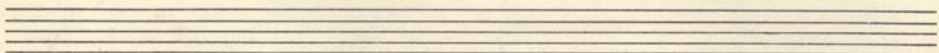
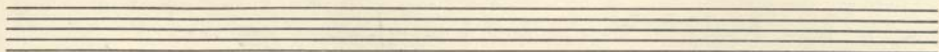
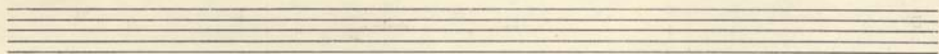
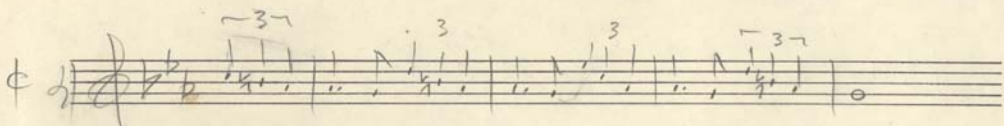
Empty musical staff.

Empty musical staff.

Empty musical staff.

Handwritten musical notation on five staves. The first staff begins with a treble clef and a key signature of two flats (B-flat and E-flat). The notation includes quarter notes, eighth notes, and sixteenth notes. The second staff features a bass clef and a key signature of two flats. The third staff has a treble clef and a key signature of two flats. The fourth staff has a bass clef and a key signature of two flats. The fifth staff has a treble clef and a key signature of two flats. The notation includes various rhythmic values and articulation marks such as accents and slurs. There are also some handwritten annotations above the notes, including "3 7" and "3 7" in the first staff, and "3" in the second staff.

Seven empty musical staves, each consisting of five horizontal lines, arranged vertically below the first five staves.



Handwritten musical score consisting of seven staves. The notation includes treble and bass clefs, a key signature of one sharp (F#), and a 3/4 time signature. The music features a complex melodic line with frequent triplets and sixteenth-note patterns. The first staff begins with a treble clef and a 3/4 time signature. The second staff continues the melody. The third and fourth staves show a more active bass line. The fifth and sixth staves return to a more melodic focus. The seventh staff concludes the piece. The manuscript includes various musical notations such as beams, slurs, and dynamic markings.

Five sets of empty musical staves, each consisting of five horizontal lines, arranged vertically on the page. These staves are currently blank and serve as a template for further musical notation.