

Handwritten musical notation for the first system. The top staff is in treble clef with a 3/4 time signature. It contains a sequence of notes: a dotted quarter note, followed by two eighth notes, then a quarter note, and finally two dotted half notes. The bottom staff contains two dotted half notes.

Let there <sup>be</sup> flowers

Handwritten musical notation for the second system. The top staff is in treble clef and contains a sequence of notes: a dotted quarter note, followed by two eighth notes, then a quarter note, and finally two dotted half notes. The bottom staff contains a sequence of notes: a dotted quarter note, followed by two eighth notes, then a quarter note, and finally two dotted half notes.

Handwritten musical notation for the third system. The top staff is in treble clef and contains a sequence of notes: a dotted quarter note, followed by two eighth notes, then a quarter note, and finally two dotted half notes. The bottom staff contains a sequence of notes: a dotted quarter note, followed by two eighth notes, then a quarter note, and finally two dotted half notes.

Handwritten musical notation for the fourth system. The top staff is in treble clef and contains a sequence of notes: a dotted quarter note, followed by two eighth notes, then a quarter note, and finally two dotted half notes.

Empty musical staff.

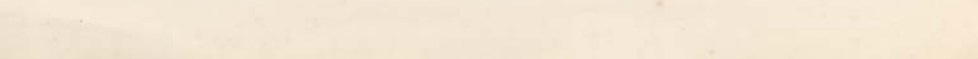
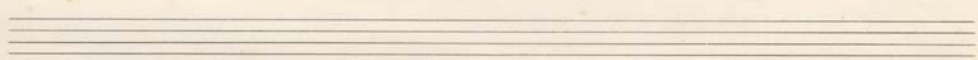
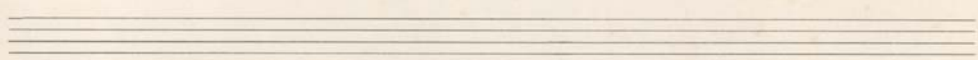
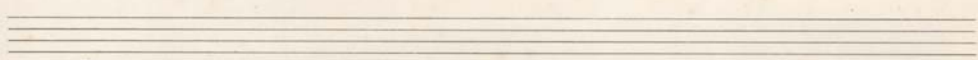
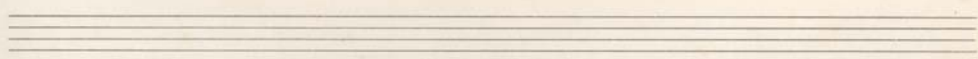
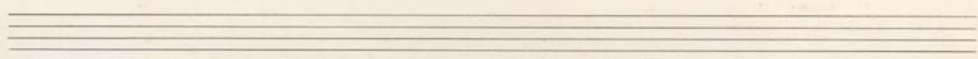
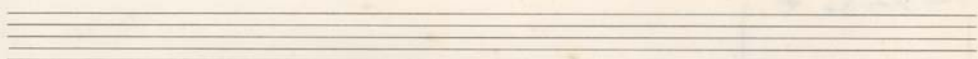
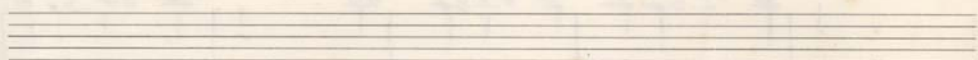
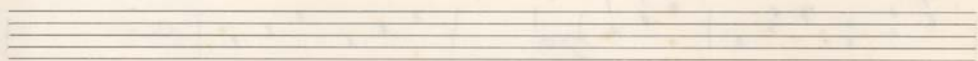
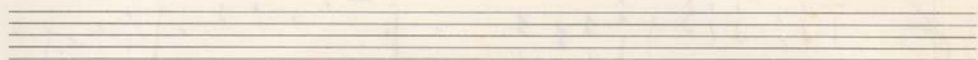
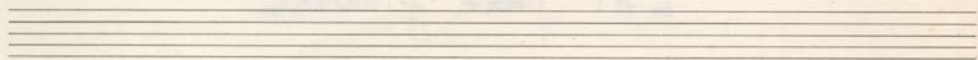
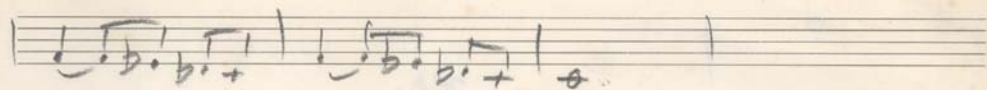
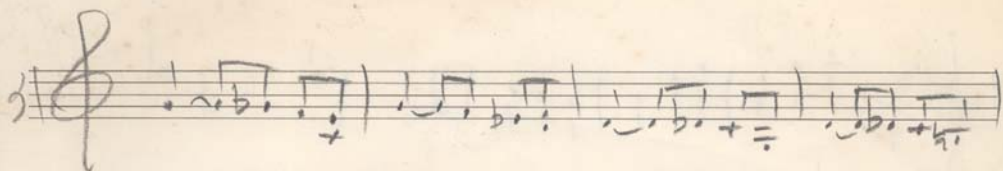
Empty musical staff.

Empty musical staff.

Empty musical staff.

Empty musical staff.

Empty musical staff.

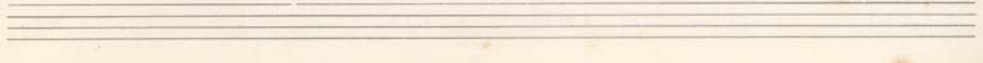
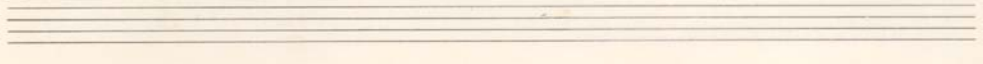
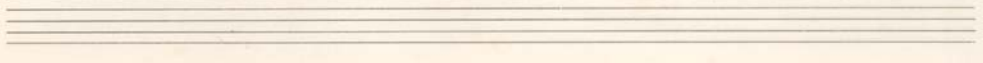
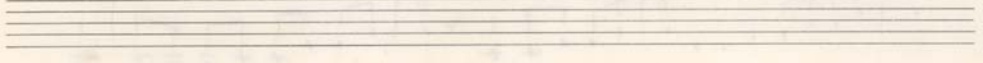
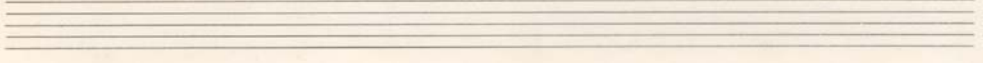
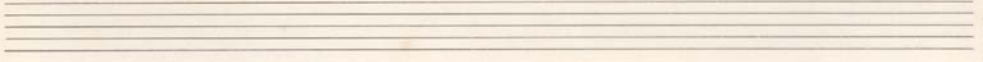
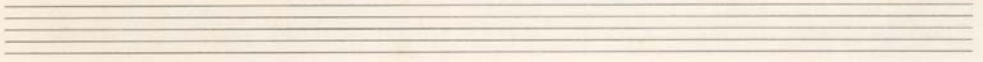
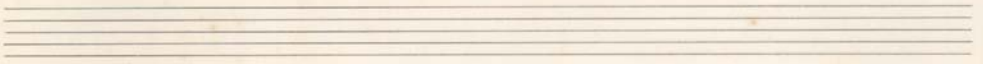
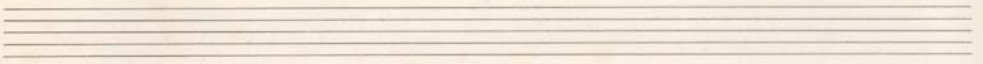
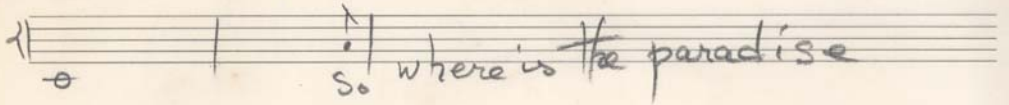
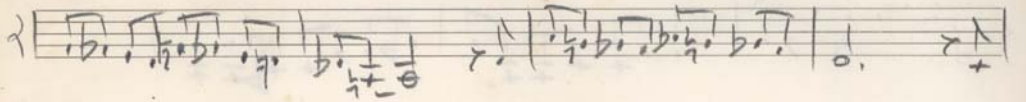
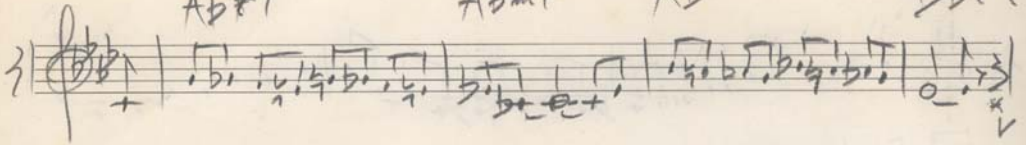


Ab#+

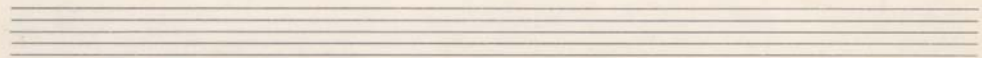
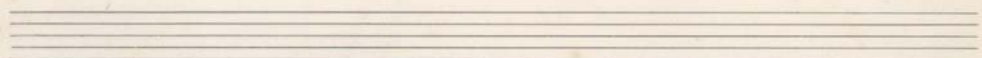
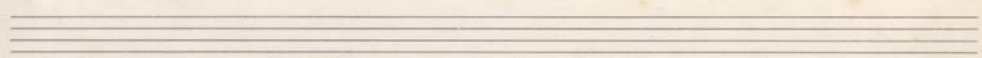
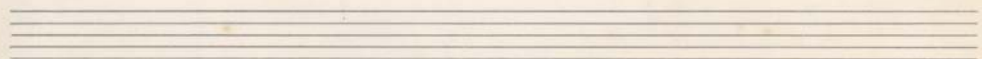
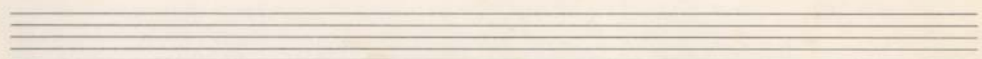
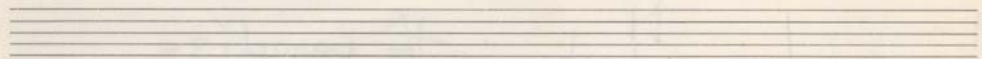
Abm7

Ab

D $\flat$ 7 $\flat$ 9



Handwritten musical notation on two staves. The top staff begins with a treble clef and a key signature of one flat (B-flat). The music consists of several measures of eighth and sixteenth notes, some with stems pointing down. The bottom staff begins with a bass clef and contains similar rhythmic notation, including some notes with stems pointing up. There are some faint markings and a circled '5' in the first measure of the bottom staff.



Handwritten musical notation on a single staff. The notation includes eighth and sixteenth notes, some with stems pointing down, and a final measure with a whole note and a fermata. There are some faint markings and a circled '5' in the first measure.

