

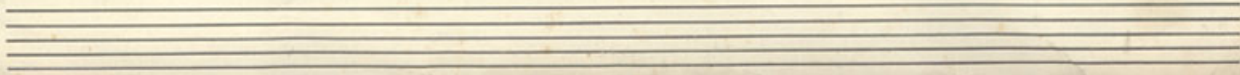
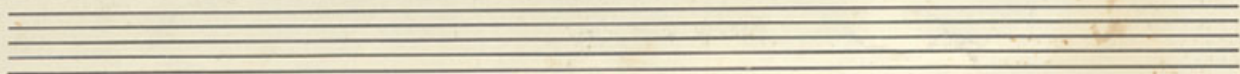
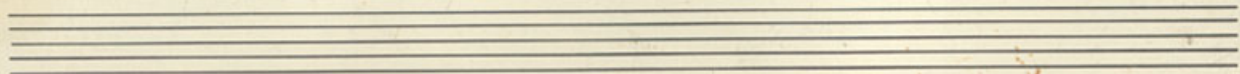
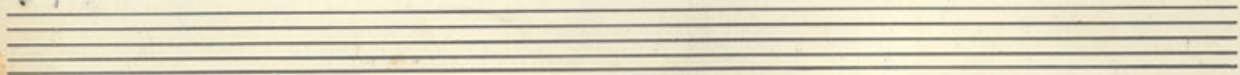
Chanson

Tam Jobi

Introd.

Handwritten musical score for guitar on three staves. The first staff is in treble clef, the second in bass clef, and the third in bass clef. The music consists of a series of chords and melodic lines. Above the staves are various guitar chord notations: D7, G7(11), G7(9), Gm7, C7, Gm7, C7(9), D7(9), and G7(11). The score ends with a double bar line and a flourish.

C C7M C7 C6 C#5 D7(9) G7(11)13



Voz

Chord symbols and notes visible in the score:

- Staff 1 (Voice): G7(13), C6, Em, A7(13) Cm7M
- Staff 2 (Guitar): Dm7, G7m, Dm7, G7(b9), Cm7, Fm7, Cm7, F7
- Staff 3 (Guitar): E7M, B7/F#, E7M, B7/G#, F7M, C7/G, F7M, B7, E6
- Staff 4 (Guitar): G79(11), G79, C69, Am7, D79, G7(11)13, G79C7M, C6
- Staff 5 (Guitar): C69, Am7, D79, G79(11)13, Gm7, C479, F7M
- Staff 6 (Guitar): Fm7, Fm6, C7M, Ab7(b9), G7(b9), C69, F#7(#11)

Chord symbols and notes visible in the staff:

- Chord symbols: C69, Am7, D79, G7(11)13, D7, C7M6(9)

C67M(9)

D6(#4)7

a quarta aparece antes da 7²

Chansong

Handwritten musical notation for 'Chansong'. The score consists of four staves. The first staff is in 5/4 time, with a treble clef and a key signature of one sharp (F#). It features a complex rhythmic pattern with many eighth and sixteenth notes, and includes a common time signature 'C' in the middle. The second staff is in 3/4 time, with a treble clef and a key signature of one sharp (F#). It contains several triplet markings. The third staff is in 3/4 time, with a bass clef and a key signature of one sharp (F#). It also features triplet markings. The fourth staff is in 3/4 time, with a bass clef and a key signature of one sharp (F#). The notation includes various note values, rests, and articulation marks.

Eight empty musical staves, each consisting of five horizontal lines, arranged vertically for writing.