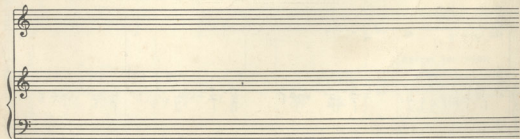
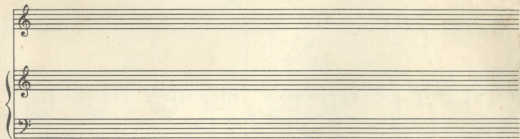
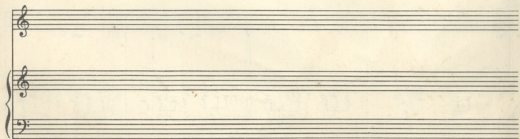
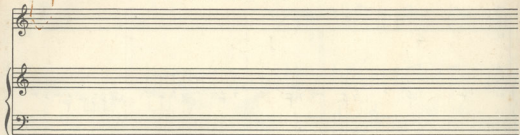


CAMINHO DE PEDRA



Handwritten musical score system 1. It consists of three staves: a treble clef staff at the top, a grand staff (treble and bass clefs) in the middle, and a bass clef staff at the bottom. The top staff contains rests. The grand staff contains a melodic line with notes and rests, and a piano accompaniment with chords and eighth notes. The bass staff contains a simple bass line with quarter notes. Dynamics markings include *f*, *mf*, and *pp*.

Handwritten musical score system 2. It consists of three staves: a treble clef staff at the top, a grand staff in the middle, and a bass clef staff at the bottom. The top staff contains a melodic line. The grand staff contains piano accompaniment with chords and eighth notes. The bass staff contains a simple bass line. A marking "SIMILE" is present in the middle staff. Dynamics markings include *f*, *mf*, and *pp*.

Handwritten musical score system 3. It consists of three staves: a treble clef staff at the top, a grand staff in the middle, and a bass clef staff at the bottom. The top staff contains a melodic line. The grand staff contains piano accompaniment with chords and eighth notes. The bass staff contains a simple bass line. A marking "cat" is present above the top staff. Dynamics markings include *f*, *mf*, and *pp*.

Handwritten musical score system 4. It consists of three staves: a treble clef staff at the top, a grand staff in the middle, and a bass clef staff at the bottom. The top staff contains rests. The grand staff contains piano accompaniment with chords and eighth notes. The bass staff contains a simple bass line. A marking "to" is present at the end of the system. Dynamics markings include *f*, *mf*, and *pp*.

12 =  $\text{♩}$

Handwritten musical score for the first system. It consists of a vocal line on a single staff and a piano accompaniment on a grand staff (treble and bass clefs). The tempo is marked '12 = quarter note'. The music begins with a whole rest, followed by a series of eighth and sixteenth notes in the vocal line. The piano accompaniment features chords and moving lines in both hands.

Handwritten musical score for the second system. The vocal line continues with eighth and sixteenth notes. The piano accompaniment includes chords and moving lines, with some notes marked with accents.

Handwritten musical score for the third system. The vocal line continues. The piano accompaniment includes chords and moving lines. A handwritten instruction 'to And' with a circled 'f' is written above the piano part.

Handwritten musical score for the fourth system. The vocal line continues. The piano accompaniment includes chords and moving lines. A handwritten instruction 'REPEAT AND FADE' is written above the piano part. The system ends with a double bar line and repeat dots.