

Handwritten musical notation on a five-line staff. It includes a treble clef, a key signature of one sharp (F#), and a time signature of 4/4. The notation consists of several measures of music with notes and rests. Above the staff, there are handwritten annotations: "2 violas" and "2 cellos" with arrows pointing to specific notes. At the top center, there is a handwritten word "Caminho" with lines pointing to notes in the first measure.

Caminho de Pedra

Letra: Vinicius de Moraes

Musica: Antonio Carlos Jobim

(C. Final)

Repetindo

Canto

Vocalize

até reunir

1.ª Flauta (copia) sozinho

2.ª Elizete solo

3.ª As duas juntas rep. até reunir

Caminto a la Piedra

Poesia de V. de Mena
Musica de A.C. Jobin

The image shows a handwritten musical score on a page with ten staves. The first three staves contain notation for the first system. The top staff is a treble clef with a 2/4 time signature. The middle staff is a treble clef with a 2/4 time signature, containing two chords with fingerings: the first chord has fingers 1, 2, 3 on strings 1, 2, 3 and 4 on string 4; the second chord has fingers 1, 2, 3 on strings 1, 2, 3 and 4 on string 4. The bottom staff is a bass clef with a 2/4 time signature, containing a single note on the 4th line (F4) with a '+' sign below it. The first system is divided into two measures by a vertical bar line. The remaining seven staves are empty.

Seven empty musical staves on the page, each consisting of five horizontal lines.

Gravado - 1958. Euzébio Cruz e José - Porto Alegre, Rio Grande do Sul

Mus. A.C. Jobim
Letra. Vinícius de Moraes

Cópia

1

Handwritten musical score for guitar and piano. The top staff is for guitar, and the bottom staff is for piano. The music is in 4/4 time with a key signature of one sharp (F#). The guitar part features a complex rhythmic pattern with many beamed notes and accents. The piano part consists of chords and some melodic lines.

2ª comp. ritard.

CB. Pizz

flus

all. e vidas

Handwritten musical score for guitar and piano. The top staff is for guitar, and the bottom staff is for piano. The music is in 4/4 time with a key signature of one sharp (F#). The guitar part features a complex rhythmic pattern with many beamed notes and accents. The piano part consists of chords and some melodic lines.

Santa Elizete

Handwritten musical score for guitar and piano. The top staff is for guitar, and the bottom staff is for piano. The music is in 4/4 time with a key signature of one sharp (F#). The guitar part features a complex rhythmic pattern with many beamed notes and accents. The piano part consists of chords and some melodic lines.

Flauta

Handwritten musical score for guitar and piano. The top staff is for guitar, and the bottom staff is for piano. The music is in 4/4 time with a key signature of one sharp (F#). The guitar part features a complex rhythmic pattern with many beamed notes and accents. The piano part consists of chords and some melodic lines.

II

C#m

D7

C#m F#m G# C#m F#m G# C#m E7+ km6 E7 km6

E7 km E

Entrada Carlos José

3

x

Handwritten musical notation for the first system, consisting of two staves. The top staff contains a series of rhythmic patterns, including a triplet of eighth notes and a group of sixteenth notes. The bottom staff contains a few notes and rests. A '2' is written at the end of the system, possibly indicating a second ending or a measure count.

Handwritten musical notation for the second system, consisting of two staves. The top staff features complex rhythmic patterns, including a triplet of eighth notes and a group of sixteenth notes. The bottom staff contains a few notes and rests. A '3' is written above the top staff, possibly indicating a triplet or a measure count.

Handwritten musical notation for the third system, consisting of two staves. The top staff features complex rhythmic patterns, including a triplet of eighth notes and a group of sixteenth notes. The bottom staff contains a few notes and rests. A '3' is written above the top staff, possibly indicating a triplet or a measure count.

Handwritten musical notation for the fourth system, featuring a single staff with a treble clef, a 2/4 time signature, and the word "Repetindo" written above the staff. The notation shows a series of notes and rests, ending with a double bar line and repeat dots.

Handwritten musical notation for the fifth system, featuring two staves. The top staff contains the words "1ª Flauta" and "2ª Clarinet" written below the staff. The bottom staff contains the words "3ª as duas partes repetidas de novo" written below the staff.

Pavia Branca

A.C. Jobim e
Vinícius de Moraes

(10)

Handwritten musical score for the first system of 'Pavia Branca'. It consists of three staves: a vocal line in treble clef with a 3/4 time signature, and two piano accompaniment staves in bass clef. The music is written in a simple, clear hand.

Handwritten musical score for the second system of 'Pavia Branca'. It continues the three-staff format. The piano accompaniment includes a section with a 'v.' (vibrato) marking and a 'cadenza' section with a double bar line and repeat signs.

S. canto Elizete

Handwritten musical score for the third system, titled 'S. canto Elizete'. It features a vocal line in treble clef and two piano accompaniment staves in bass clef. The piano part includes a section with a double bar line and a 'cadenza' section.

Handwritten musical score for the fourth system. It consists of a single vocal line in treble clef and two empty piano accompaniment staves in bass clef. The system ends with a double bar line and a repeat sign.

Antônio Carlos Jobim

8^a abaxo

(2)

Violino

Violino

8^a abaxo

ca

Da. 8. 20. 0.

pp vln

flauto glis

Repetindo até o fim

① Chega de Saudade
(Violinos 2ª e 3ª ou Sax Tenor neste está)

H.C.J.
Vinícius de M.
para Elizeth Cardoso

1 Trombone

eff Trompa

allos

(b) *lenta (copias)*

Canta

Handwritten musical notation for the first system. The top staff uses a treble clef and contains a melodic line with eighth and sixteenth notes, including a flat sign (b). The bottom staff uses a bass clef and contains a bass line with chords and rests, including a flat sign (b).

Handwritten musical notation for the second system. The top staff uses a treble clef and contains a melodic line with eighth and sixteenth notes, including a flat sign (b). The bottom staff uses a bass clef and contains a bass line with chords and rests, including a flat sign (b).

Handwritten musical notation for the third system. The top staff uses a treble clef and contains a melodic line with eighth and sixteenth notes, including a flat sign (b). The bottom staff uses a bass clef and contains a bass line with chords and rests, including a flat sign (b).

Handwritten musical notation for the fourth system. The top staff uses a treble clef and contains a melodic line with eighth and sixteenth notes, including a sharp sign (#). The bottom staff uses a bass clef and contains a bass line with chords and rests, including a sharp sign (#).

The first system of handwritten musical notation consists of three staves. The top staff is in treble clef and contains a melodic line with notes and rests, including some accidentals. The middle staff is in alto clef and contains a bass line with notes and rests. The bottom staff is in bass clef and contains a bass line with notes and rests. The notation is somewhat sketchy and includes various symbols like slurs and bar lines.

The second system of handwritten musical notation consists of two staves. The top staff is in treble clef and contains a melodic line with notes and rests, including some accidentals. The bottom staff is in bass clef and contains a bass line with notes and rests. The notation is somewhat sketchy and includes various symbols like slurs and bar lines.

The third system of handwritten musical notation consists of two staves. The top staff is in treble clef and contains a melodic line with notes and rests, including some accidentals. The bottom staff is in bass clef and contains a bass line with notes and rests. The notation is somewhat sketchy and includes various symbols like slurs and bar lines.

The fourth system of handwritten musical notation consists of two staves. The top staff is in treble clef and contains a melodic line with notes and rests, including some accidentals. The bottom staff is in bass clef and contains a bass line with notes and rests. The notation is somewhat sketchy and includes various symbols like slurs and bar lines.

Handwritten musical notation on a three-staff system. The top staff contains a melodic line with various note values and rests. The middle and bottom staves are empty, with vertical bar lines extending from the top staff.

Handwritten musical notation on a three-staff system. The top staff contains a melodic line with various note values and rests. The middle and bottom staves are empty, with vertical bar lines extending from the top staff.

A single empty musical staff consisting of five horizontal lines.

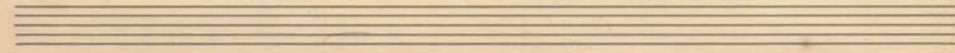
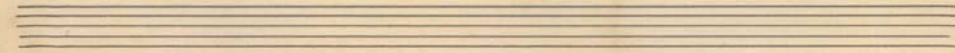
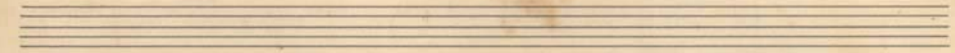
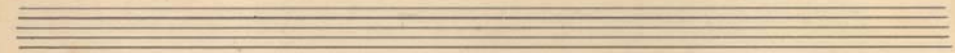
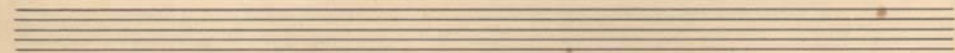
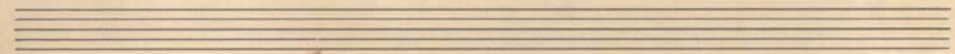
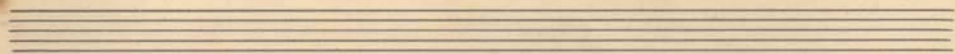
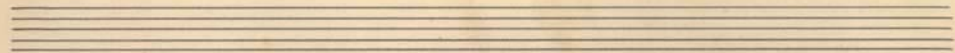
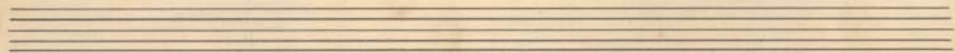
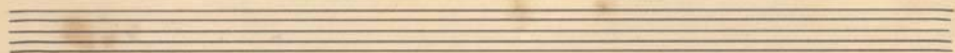
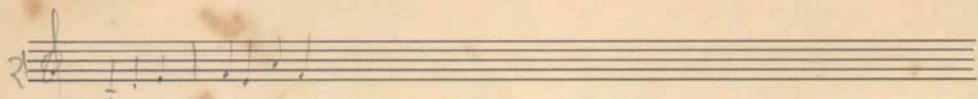
A single empty musical staff consisting of five horizontal lines.

A single empty musical staff consisting of five horizontal lines.

A single empty musical staff consisting of five horizontal lines.

A single empty musical staff consisting of five horizontal lines.

A single empty musical staff consisting of five horizontal lines.



1ª parte

para cello

Handwritten musical notation on a single staff. It begins with a treble clef and a 3/4 time signature. The first measure contains a triplet of eighth notes. The second measure has a whole note. The third measure contains a triplet of eighth notes. The fourth measure is a whole rest. The fifth measure contains a whole note with the word "não" written above it. The sixth measure contains a whole note with "tam" written below it. The seventh measure contains a whole note with "Bm" written below it. The eighth measure contains a triplet of eighth notes. The ninth measure contains a triplet of eighth notes.

Handwritten musical notation on a single staff. It begins with a treble clef and a 3/4 time signature. The first measure contains a triplet of eighth notes. The second measure contains a triplet of eighth notes. The third measure is a whole rest. The fourth measure contains a whole note with "não" written above it. The fifth measure contains a whole note with "Em" written below it. The sixth measure contains a triplet of eighth notes. The seventh measure contains a triplet of eighth notes. The eighth measure contains a triplet of eighth notes. The ninth measure contains a triplet of eighth notes.

Handwritten musical notation on a single staff. It begins with a treble clef and a 3/4 time signature. The first measure contains a triplet of eighth notes. The second measure contains a triplet of eighth notes. The third measure contains a triplet of eighth notes. The fourth measure contains a triplet of eighth notes. The fifth measure contains a triplet of eighth notes. The sixth measure contains a triplet of eighth notes. The seventh measure contains a triplet of eighth notes. The eighth measure contains a triplet of eighth notes. The ninth measure contains a triplet of eighth notes.

Handwritten musical notation on a single staff. It begins with a treble clef and a 3/4 time signature. The first measure is a whole rest. The second measure contains a whole note with "Bm" written below it. The third measure contains a triplet of eighth notes. The fourth measure contains a triplet of eighth notes. The fifth measure contains a triplet of eighth notes. The sixth measure contains a triplet of eighth notes. The seventh measure contains a triplet of eighth notes. The eighth measure contains a triplet of eighth notes. The ninth measure contains a triplet of eighth notes.

Handwritten musical notation on a single staff. It begins with a treble clef and a 3/4 time signature. The first measure contains a triplet of eighth notes. The second measure contains a triplet of eighth notes. The third measure contains a triplet of eighth notes. The fourth measure contains a triplet of eighth notes. The fifth measure contains a triplet of eighth notes. The sixth measure contains a triplet of eighth notes. The seventh measure contains a triplet of eighth notes. The eighth measure contains a triplet of eighth notes. The ninth measure contains a triplet of eighth notes.

Handwritten musical notation on a single staff. It begins with a treble clef and a 3/4 time signature. The first measure is a whole rest. The second measure contains a triplet of eighth notes. The third measure contains a triplet of eighth notes. The fourth measure contains a triplet of eighth notes. The fifth measure contains a triplet of eighth notes. The sixth measure contains a triplet of eighth notes. The seventh measure contains a triplet of eighth notes. The eighth measure contains a triplet of eighth notes. The ninth measure contains a triplet of eighth notes.

Handwritten musical notation on a single staff. It begins with a treble clef and a 3/4 time signature. The first measure contains a whole note with "E7" written below it. The second measure contains a whole note with "Bm7" written below it. The third measure contains a whole note with "E7" written below it. The fourth measure contains a whole note with "Bm7" written below it. The fifth measure contains a whole note with "Am" written below it. The sixth measure contains a triplet of eighth notes. The seventh measure contains a triplet of eighth notes. The eighth measure contains a triplet of eighth notes. The ninth measure contains a triplet of eighth notes.

Handwritten musical notation on a single staff. It begins with a treble clef and a 3/4 time signature. The first measure contains a whole note with "Em7" written below it. The second measure contains a triplet of eighth notes. The third measure contains a triplet of eighth notes. The fourth measure contains a triplet of eighth notes. The fifth measure contains a triplet of eighth notes. The sixth measure contains a triplet of eighth notes. The seventh measure contains a triplet of eighth notes. The eighth measure contains a triplet of eighth notes. The ninth measure contains a triplet of eighth notes.

etc

gli Altri

Four empty musical staves, each consisting of five lines, arranged vertically at the bottom of the page.

Serenata do Adeus

Chega de Saudade

Eu não existo sem Você

Mêdo de Amar
Luciana

Praia Branca
Caminha de Pedra

Outra Vez
As praias Desertas
Modinha
Canção do Amor Demais
Estrada Branca

Canta Leanta

Handwritten musical notation for the first system of 'Canta Leanta'. It features a single staff with a treble clef and a key signature of one flat. The notation includes several measures of music with various note values and rests. There are small '+' signs and some symbols below the notes, possibly indicating fingerings or performance instructions. The system is enclosed in a large bracket on the left side.

Handwritten musical notation for the second system of 'Canta Leanta'. It continues the single staff with treble clef and one flat key signature. The notation shows further development of the musical piece with similar note values and rests as the first system. It also includes small '+' signs and symbols below the notes. The system is enclosed in a large bracket on the left side.

Cessa
Ritana

Handwritten musical notation for the third system, labeled 'Cessa Ritana'. It features a single staff with a treble clef and a key signature of one flat. The notation includes several measures of music with various note values and rests. There are small '+' signs and some symbols below the notes, possibly indicating fingerings or performance instructions. The system is enclosed in a large bracket on the left side.

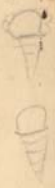
Handwritten musical notation for the fourth system. It features a single staff with a treble clef and a key signature of one flat. The notation includes several measures of music with various note values and rests. There are small '+' signs and some symbols below the notes, possibly indicating fingerings or performance instructions. The system is enclosed in a large bracket on the left side.

250
750
300
A. 300

Handwritten scribbles at the top right of the page.

Handwritten musical score on ten staves. The notation is highly scribbled and includes various symbols, clefs, and notes. The word "Pianetti" is written in the lower middle section. There are also some large, illegible scribbles and symbols throughout the score.

Vertical markings on the left side of the page, possibly indicating measures or sections.



Handwritten numbers 7, 3, 2, 14 in the right margin.

Handwritten number 18 in a box at the bottom right.

1 ob
1 cl
1 fag. p.
1 Viola
1 Violon
1 Vib.
1 Basso
1 CB

1 fl
1 Violon

1 Trompa
1 CB