

Flo Luis (Luz) un abrazo d- Tamca

1<sup>o</sup> vez D. Ana

2<sup>o</sup> vez Tam

3<sup>o</sup> vez Sdelede

4<sup>o</sup> vez S. Antonio

CHORO MODERATO  
- Violino Solo -

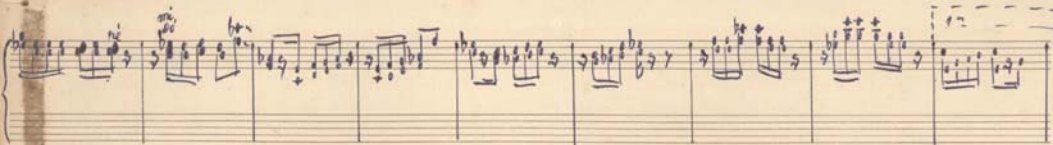
The first system of handwritten musical notation for a Violino Solo piece. It begins with a treble clef and a 2/4 time signature. The music consists of a series of eighth and sixteenth notes, with some rests. A circled number '3' is written above the final measure of the system. The notation is written in ink on aged paper.

The second system of handwritten musical notation. It continues the melodic line from the first system, featuring a mix of eighth and sixteenth notes. The key signature has one sharp (F#). The notation is dense and characteristic of Brazilian choro style.

The third system of handwritten musical notation. It shows a continuation of the piece with various rhythmic patterns. A circled number '3' is present above the first measure. The notation includes many beamed notes and rests.

The fourth system of handwritten musical notation. The melodic line continues with intricate rhythmic figures. The notation is consistent with the previous systems, showing a high level of technical skill.

The fifth and final system of handwritten musical notation. It concludes the piece with a series of rhythmic patterns. Above the first two measures, there are markings that appear to be '1a vez' and '2a vez' with arrows, indicating first and second endings. The notation ends with a double bar line.



*Travelling*

Piano	- 600,00	Org -	1.000,00
Fanfa	- 600,00	Copias	- 260,00
Flaut	- 600,00		
Bat	- 600,00		
Quit	- 600,00	3.600,00	
Cl	- 600,00	280,00	
Maestro	- 880,00	1.260,00	
		<u>5.740,00</u>	

{ Muie de vio. agu  
 Teh. Média

Karpido. Wilson T. - 502 + 57586  
 Paulo Campes

579586

VIGINO SOLO

FOX - MODERATO

Handwritten musical notation on a single staff. It begins with a treble clef and a key signature of one flat (B-flat). The tempo is marked "MODERATO". The notation includes various note values, rests, and dynamic markings such as "Horn", "nat.", and "Pizz". A circled "5." is written above the staff in the third measure.

Handwritten musical notation on a grand staff (treble and bass clefs). It features complex rhythmic patterns, including sixteenth and thirty-second notes, and rests. Dynamic markings like "p" and "f" are present.

Handwritten musical notation on a grand staff. It continues the piece with various note values and rests. Dynamic markings such as "p" and "f" are used throughout.

Handwritten musical notation on a grand staff. It includes a section marked "Crio" and "Pizz.". The notation features a mix of note values and rests.

Handwritten musical notation on a grand staff. It concludes the piece with various note values, rests, and dynamic markings like "Horn" and "Pizz.". The notation is dense with rhythmic detail.

Frank Dink

CHORO CANÇÃO

Violino Solo

The first system of handwritten musical notation for 'Choro Canção' consists of two staves. The upper staff is in treble clef with a 2/4 time signature. It begins with a key signature of one flat (B-flat) and contains a series of eighth and sixteenth notes, some beamed together, with various accidentals (sharps and flats) and dynamic markings. The lower staff is in bass clef and contains a few notes, including a whole note chord at the end of the system.

The second system of handwritten musical notation continues the piece. It features a treble clef staff with a key signature of two flats (B-flat and E-flat). The notation includes a variety of rhythmic patterns, such as eighth and sixteenth notes, and rests. The lower staff continues with bass clef notation, including a whole note chord at the end of the system.

The third system of handwritten musical notation continues the piece. It features a treble clef staff with a key signature of two flats (B-flat and E-flat). The notation includes a variety of rhythmic patterns, such as eighth and sixteenth notes, and rests. The lower staff continues with bass clef notation, including a whole note chord at the end of the system.

Francisco

Angela - Tarda

3 V.

2 Vla  
4 Cello

1  $\frac{1}{2}$  |  
1 guit. →

1 Pina  
1 Basso

1-3  
V  
2-4  
V