

flauta

Maiara - samba

Flavia Cavalcanti

Handwritten musical notation for flute, first staff. The key signature is two flats (Bb, Eb) and the time signature is 4/4. The staff contains several measures of music, including a triplet of eighth notes and a triplet of sixteenth notes. There are various fingerings and accents indicated above the notes.

Handwritten musical notation for flute, second staff. It continues the piece with more complex rhythmic patterns, including triplets and slurs. Fingerings and accents are clearly marked.

Handwritten musical notation for flute, third staff. This section includes first and second endings, indicated by 'I' and 'II' above the staff. The notation is dense with notes and slurs.

Handwritten musical notation for flute, fourth staff. It features a section with a first ending marked 'I' and a second ending marked 'II'. The notation includes slurs and various note values.

Handwritten musical notation for flute, fifth staff. This staff contains more complex rhythmic patterns, including triplets and slurs. It ends with a first ending marked 'Ho' and a second ending marked 'S'.

Empty musical staff.

Empty musical staff.

Empty musical staff.

Empty musical staff.

Empty musical staff.

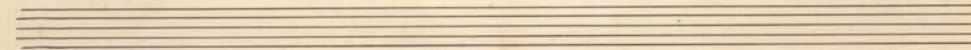
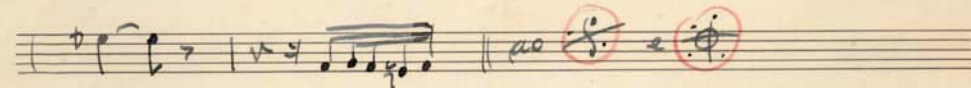
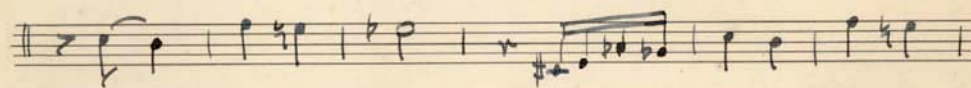
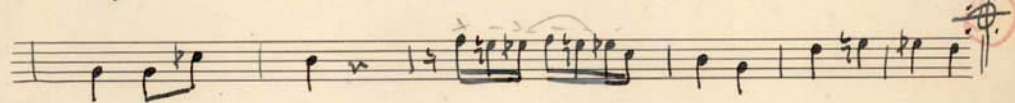
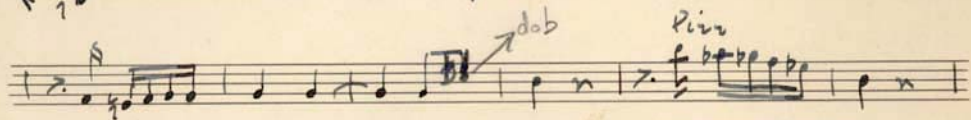
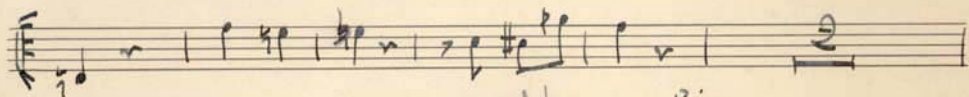
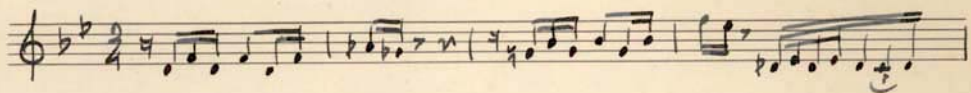
Empty musical staff.

Empty musical staff.

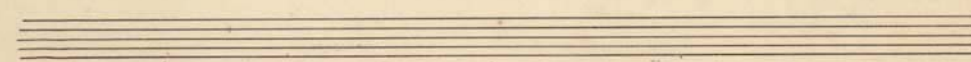
Violino A

Noanias

Santa



Pizz

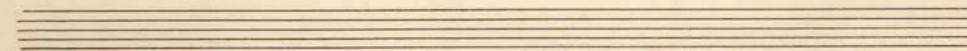
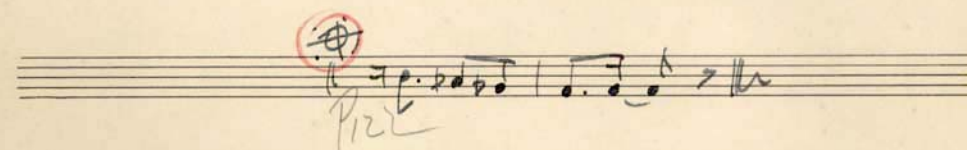
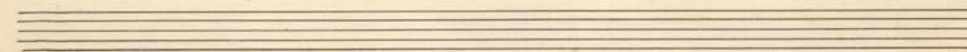
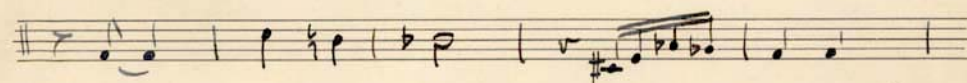
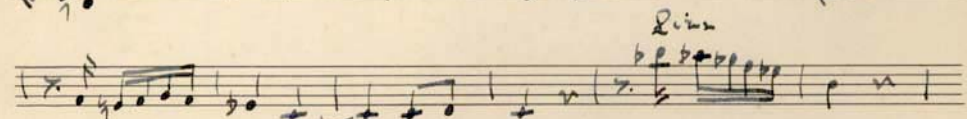
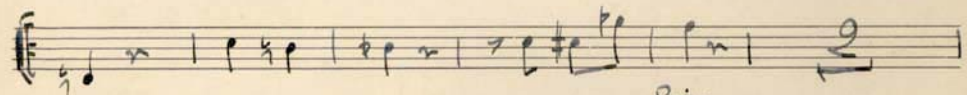
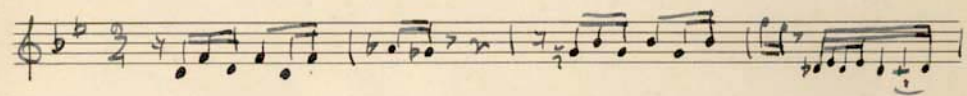


Violino B

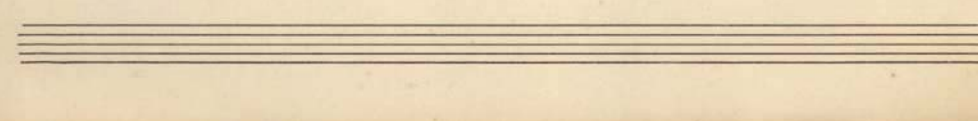
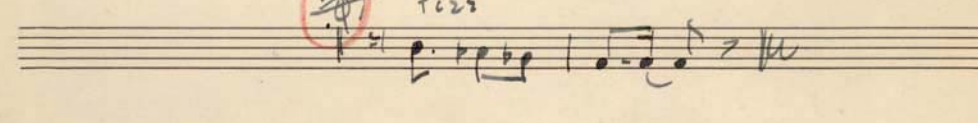
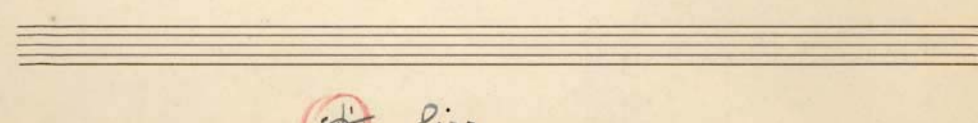
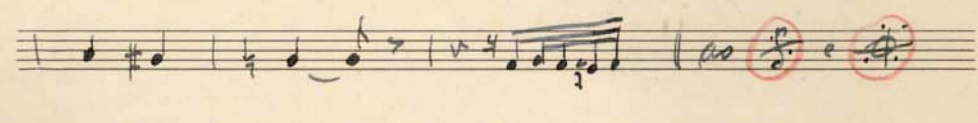
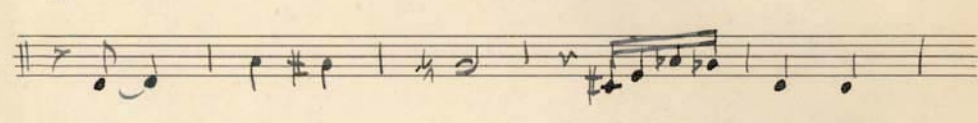
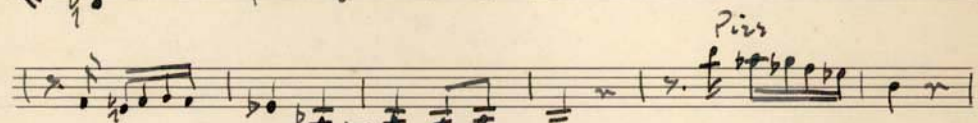
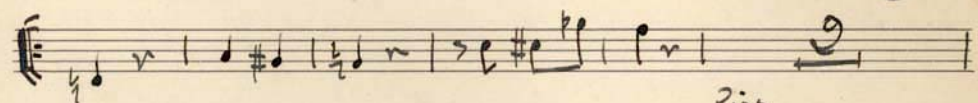
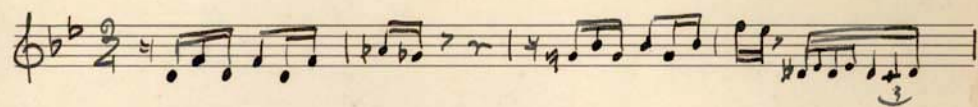
Manias

Santa

Violino e *Manias* *Santa*



Violino D *Mauis* Samba



Baixo *Marias* Santa

Handwritten musical score for 'Baixo Marias Santa'. The score is written on ten staves. The first staff is in bass clef with a key signature of one flat and a 2/4 time signature. The music consists of eighth and sixteenth notes, with some triplets. There are several annotations: a circled 'S' with a cross through it on the fifth staff, another circled 'S' with a cross through it on the sixth staff, and a circled 'S' with a cross through it on the seventh staff. Roman numerals '2v.', 'IV.', and 'IV.' are written above some measures. The score ends with a double bar line and a final flourish.

Flordeon

Marias - Samba

Flavio Cavalcanti

Canta Lucio Alves

Piano

Manias

Santa

Conteius

Violino A

"

"

"

Viola

Baixo

Piano

Flavio Cavalcanti

Mrs. Antonio Carlos Jobim

Handwritten musical notation, first system. Treble clef, key signature of two flats (Bb, Eb), 2/4 time signature. Chords: Bb7 + Gm7, C#m7, F#7, Em7, Em7, F7 5+.

Handwritten musical notation, second system. Bass clef. Chords: Bb7 + Gm7, Dm7, C#m7, Em7, F7, F#7 5+, Bb7 +.

Handwritten musical notation, third system. Bass clef. Chords: Dm7, C#m7, Em7, F7, Fm7, Fm6, Fm7, Bb7.

Handwritten musical notation, fourth system. Bass clef. Chords: Eb7 +, Ab7, Gm7, Gm6, Gm7, C9, Em7.

Handwritten musical notation, fifth system. Treble clef. Chords: F7, F5+, F7, F5+, Bb7 + Gm7, Dm7, C#m7, Em7. Includes a section marked "Solo" with a double bar line and a key signature change to one flat (Bb).

Handwritten musical notation on a grand staff. The left hand part contains the following chords: F7, F7, Fb7+, F7, Fm7, Fm6, Fm7, B7, Eb7+.

The right hand part contains a melodic line with a circled 'S' above the first measure. Above the staff, there are markings: $\frac{3}{4}$, *2 av.*, and a circled 'S'.

Handwritten musical notation on a grand staff. The left hand part contains the following chords: Ab7, Bb7+ Gm7, Dm7 C#m7, Em7 F7, Bb7+ Gm7.

The right hand part contains a melodic line with a circled 'S' above the fourth measure.

Handwritten musical notation on a grand staff. The left hand part contains the following chords: Dm7 C#m7, Em7, F7, F5+, Bb7+ Bb6, Dm7 C#m7.

The right hand part contains a melodic line with the word Solo written above the first measure.

Handwritten musical notation on a grand staff. The left hand part contains the following chords: Em7, F7, and a circled 'S' above the third measure.

The right hand part contains a complex chordal texture with a circled 'S' above the first measure.