

1^o Alto

Nova ilusão

Samba

f. só 2ª vez

Handwritten musical score for 1st Alto, titled "Nova ilusão" (Samba). The score consists of six staves of music in G major (one sharp) and 2/4 time. The first staff begins with a treble clef, a key signature of one sharp (F#), and a 2/4 time signature. The music features various rhythmic patterns, including eighth and sixteenth notes, and rests. There are several annotations: a red circle around the first measure of the first staff, a red bracket under the first two measures of the second staff, a red circle around the first measure of the fourth staff, and a red circle around the final measure of the fifth staff. The word "Aois" is written at the end of the fifth staff.

A series of empty musical staves at the bottom of the page, with a red circle around the first measure of the first staff.

30 Alto

tona ilusão

f. 2^a vez

Sauha

Handwritten musical score for Alto, measures 1-10. The score is in G major (one sharp) and 2/4 time. It features various rhythmic patterns including eighth and sixteenth notes, rests, and dynamic markings like 'f.' and 'p.'. There are several red circles highlighting specific notes: the first note of the first measure, a note in the fourth measure, and the final note of the tenth measure.

Handwritten musical score for Alto, measures 11-14. The score continues in G major and 2/4 time. It includes a red circle around the first note of the eleventh measure. The piece concludes with a double bar line at the end of the fourteenth measure.

2º tour

Nova Ilusão

Samba

1ª (1ª vez)

Handwritten musical score for the first system of 'Nova Ilusão'. It consists of five staves of music in G major (one sharp) and 2/4 time. The notation includes various rhythmic values such as eighth and sixteenth notes, rests, and dynamic markings like 'p' (piano) and 'f' (forte). There are several red annotations: a circled '1ª' above the first staff, a red bracket under the first two measures of the second staff, a circled 'f' above the fourth measure of the fifth staff, and a circled '505' at the end of the fifth staff.

Handwritten musical score for the second system of 'Nova Ilusão'. It consists of one staff of music in G major and 2/4 time. The notation includes eighth and sixteenth notes. There is a circled '1ª' at the beginning of the staff.

4^o Tenor

Nova Ilusão

Samba

p só 2ª vez

Handwritten musical score for 4th Tenor, titled "Nova Ilusão" (Samba). The score consists of five staves of music. The first staff begins with a circled "p" and the instruction "só 2ª vez". The music features various rhythmic patterns and dynamics.

A single staff of handwritten musical notation, starting with a circled treble clef and a key signature of one sharp (F#). The notation includes a whole note followed by a half note and a quarter note.

Baritone

Novo ilusão

(3)

Samba

Handwritten musical notation for the first system. It consists of three staves. The top staff is in treble clef with a key signature of two sharps (F# and C#) and a 2/4 time signature. It contains a series of notes with accents and rests. A circled 'f' is written above the second measure. The middle staff is in bass clef with the same key signature and time signature, containing a complex rhythmic pattern with many beamed notes. A circled 'f' is written above the final measure. The bottom staff is in bass clef with the same key signature and time signature, containing a few notes and rests. A circled 'f' is written above the final measure.

Handwritten musical notation for the second system. It consists of one staff in treble clef with a key signature of two sharps (F# and C#) and a 2/4 time signature. It contains a series of notes with accents and rests. A circled 'f' is written above the first measure. The system ends with a double bar line.

1^o Trompeta

Nova Ilusão

3

Tamba

Trumpete

Nova ilusão

Samba

3

Soubasse

fora ilusis

Soubasse
p. 2

20 troubune

Nova Lusã

Saxofone

Handwritten musical score for saxophone, consisting of five staves of music. The notation includes various notes, rests, and dynamic markings. A circled 'f' is present on the second staff, and a circled 'p' is on the fourth staff. The music is written in a key with one flat and a 2/4 time signature.

Ad. f.

A single staff of handwritten musical notation, starting with a circled treble clef. The notation includes various notes and rests.

3^o Trompeta

Nova Ilusão

N.º 3

Samba

Handwritten musical notation for the 3rd Trumpet part, measures 1 through 15. The music is in 2/4 time with a key signature of one sharp (F#). The notation includes various rhythmic values, accidentals, and dynamic markings. Red circles highlight specific notes: the first note in measure 1, the note in measure 2, and the final note in measure 15.

Five sets of empty musical staves, each consisting of five lines, provided for further notation.

Handwritten musical notation for the 3rd Trumpet part, measures 16 through 20. The music continues in 2/4 time with a key signature of one sharp. Red circles highlight the first note in measure 16 and the final note in measure 20.

f

3

2 Violins

Nova Lusio

Paula

p

f só 2a vez

Toca sempre

Arco

Arco

mf

3

3o Violino

Nova Ilusão

Paula

4^o Violino

3

Nova Lusais

Saxha

p²

toca 3^a 2^a vez

4 5 6 2

Pia

Allegro

19

[17 + 2 (Viol.)]

arco.

v p

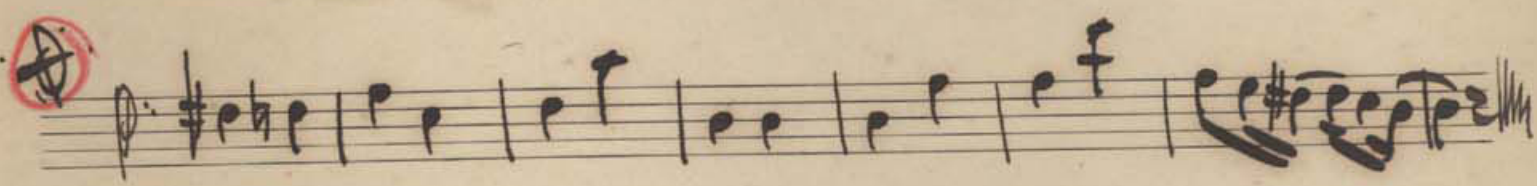
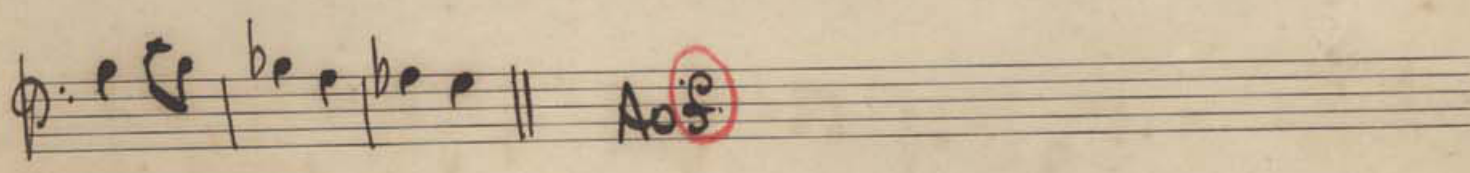
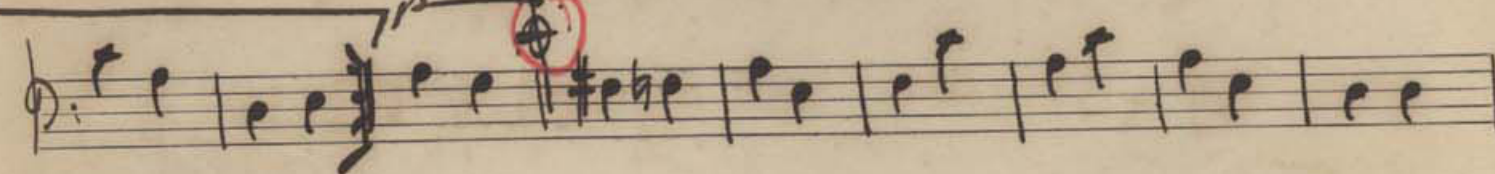
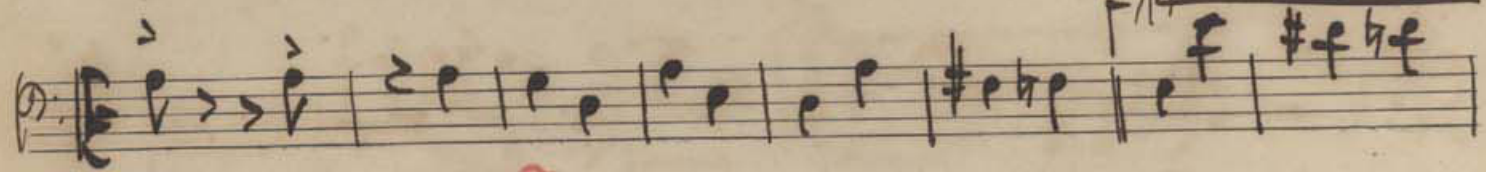
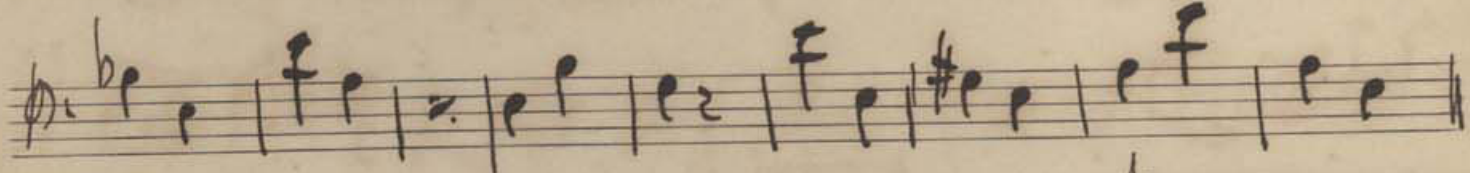
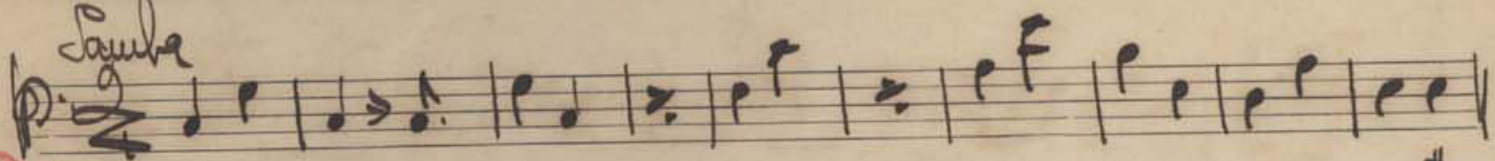
Contrabaixo

3

Novo Lusitão

Sauha

f.



Guitarra

Nova Lusais

Samba

Handwritten guitar chord notation for 'Nova Lusais'. The notation is written on two staves. The first staff shows a sequence of chords: 10, f, C, G, C9, F7+, E7, A7, and A3. The second staff shows a sequence of chords: 6, 4, 19, and Aof. There are red circles around the 'f', '19', and 'Aof' chords. The word 'Samba' is written above the first staff.

Handwritten guitar chord notation on a single staff. It shows a chord circled in red, followed by a double bar line and a chord with a 'p' marking above it.

Piano

3

Nova Ilusão

Piano

(3)

8.

Handwritten musical notation for the first system. The top staff is in treble clef with a 2/4 time signature. A bracket labeled "10" spans the first two measures. The notes are C, C, Gm7, and C9-.

Handwritten musical notation for the second system. The top staff contains chords F7+, E7, and Fm. A bracket labeled "13" spans the last two measures, followed by a double bar line and a bracket labeled "6".

Handwritten musical notation for the third system. The top staff shows Roman numerals I and II with a circled cross symbol. A bracket labeled "19" spans the last two measures, which end with a circled cross and a slash.

Handwritten musical notation for the fourth system. The top staff shows a circled cross, a bracket labeled "7", and a circled cross with a sharp sign. A bracket labeled "8." spans the last two measures, which end with a circled cross and a sharp sign.

