

# FOI A NOITE

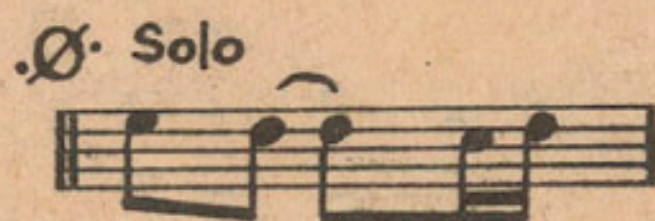
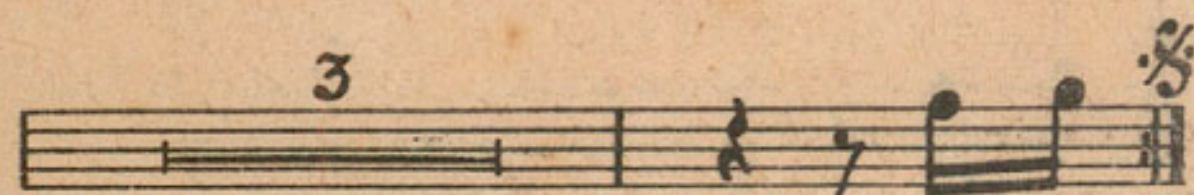
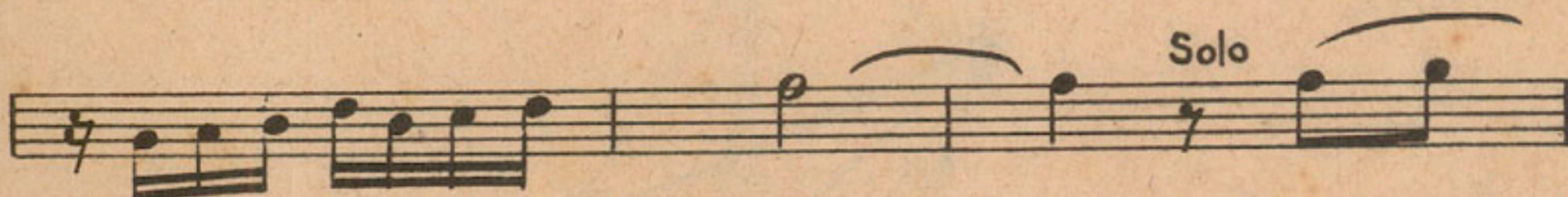
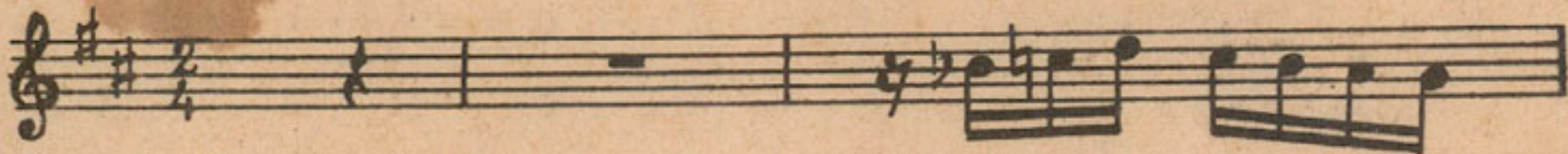
## SAMBA-CANÇÃO

de ANTONIO CARLOS JOBIM

e NEWTON MENDONÇA

1. Piston

Intr.



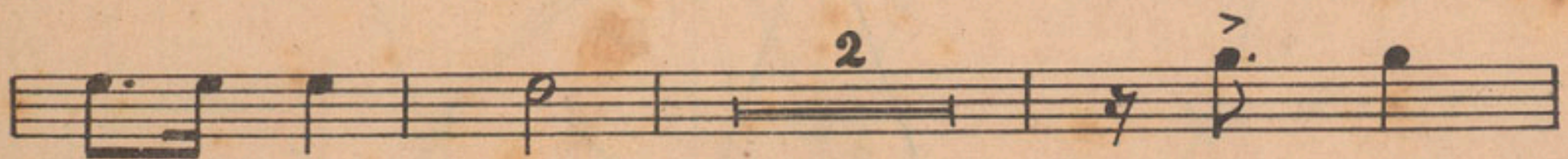
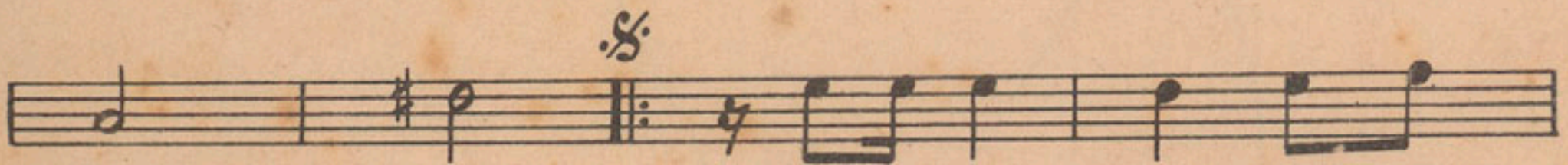
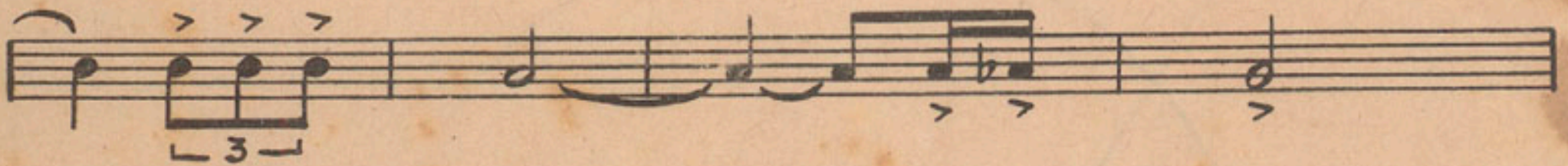


# FOI A NOITE

## SAMBA-CANÇÃO

de ANTONIO CARLOS JOBIN  
e NEWTON MENDONÇA

2.º Sax-Tenor



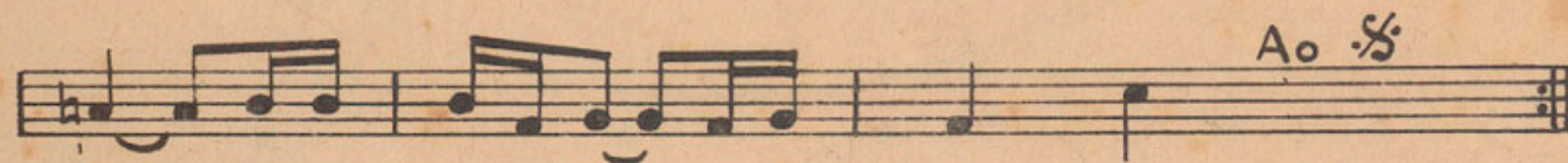
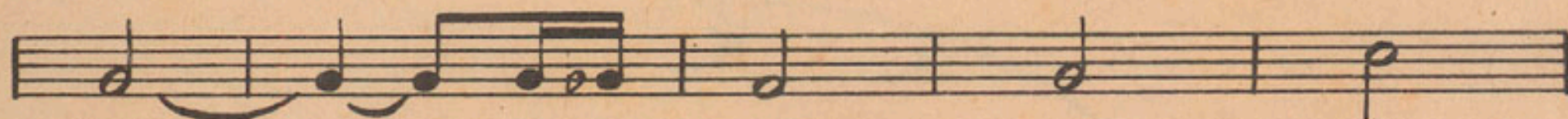


# FOI A NOITE

## SAMBA-CANÇÃO

de ANTONIO CARLOS JOBIN  
e NEWTON MENDONÇA

3. Sax-Alto





# FOI A NOITE

## SAMBA-CANÇÃO

Trombone

de ANTONIO CARLOS JOBIN  
e NEWTON MENDONÇA

The musical score for Trombone consists of seven staves of music. The first staff begins with a bass clef and a 2/4 time signature. The second staff contains a first ending bracket labeled '6'. The third staff features a second ending bracket labeled '2' and includes a triplet of eighth notes. The fourth staff starts with a triplet of eighth notes labeled '3'. The fifth staff has a first ending bracket labeled '4' and ends with a repeat sign. The sixth staff begins with a fermata. The seventh staff concludes the piece with a final note.