

- ME CHAMA -

POMBOVE

Handwritten musical notation for Pombove, consisting of five staves. The notation includes various rhythmic values, accidentals, and phrasing slurs. The first staff begins with a treble clef and a common time signature. The music features a mix of eighth and sixteenth notes, often beamed together, and includes dynamic markings such as *f* and *p*. There are also some triplets and phrasing slurs throughout the piece.

Solo Guit

Handwritten musical notation for Solo Guit, consisting of five staves. The notation includes various rhythmic values, accidentals, and phrasing slurs. The first staff begins with a treble clef and a common time signature. The music features a mix of eighth and sixteenth notes, often beamed together, and includes dynamic markings such as *f* and *p*. There are also some triplets and phrasing slurs throughout the piece. The notation is dense and expressive, with many slurs and accents.



- ME CHAMA -

Trompete

Handwritten musical notation for Trompete, measures 1-5. The notation is on a single staff with a treble clef, a key signature of one sharp (F#), and a 4/4 time signature. The music consists of eighth and quarter notes, some beamed together, and rests. There are dynamic markings such as *f* and *mp*. A fermata is placed over a note in the fifth measure.

Handwritten musical notation for Sol flut, measures 6-8. The notation is on a single staff with a treble clef, a key signature of one sharp (F#), and a 4/4 time signature. The music consists of eighth and quarter notes, some beamed together, and rests. There are dynamic markings such as *f* and *mp*. A fermata is placed over a note in the eighth measure.

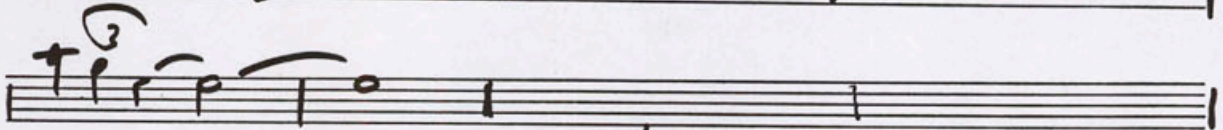
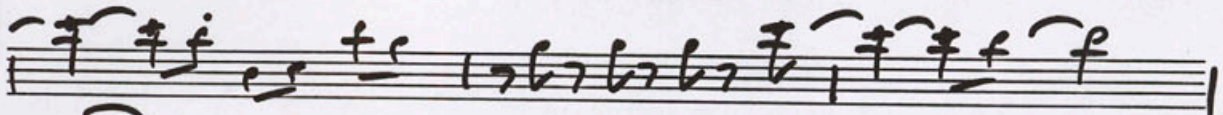
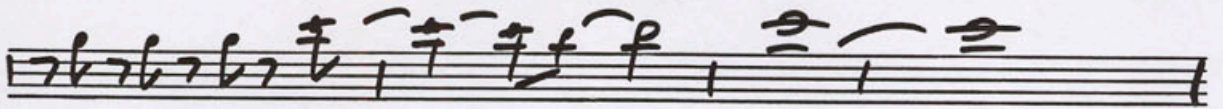
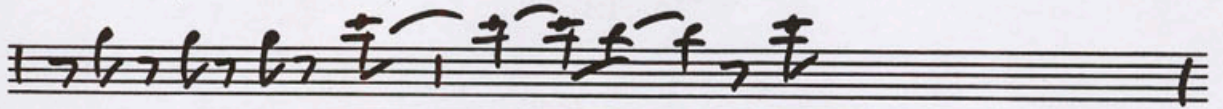
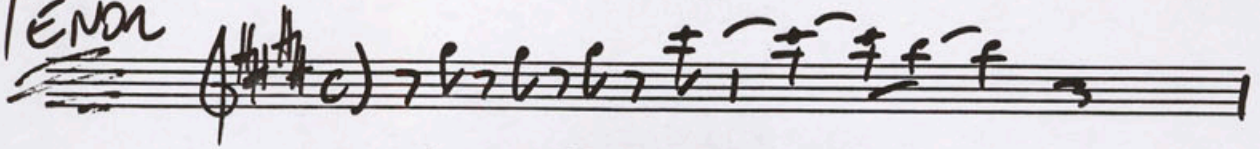
Handwritten musical notation, measures 9-10. The notation is on a single staff with a treble clef, a key signature of one sharp (F#), and a 4/4 time signature. The music consists of eighth and quarter notes, some beamed together, and rests. There are dynamic markings such as *f* and *mp*. A fermata is placed over a note in the tenth measure.

Four empty musical staves, each consisting of five lines.

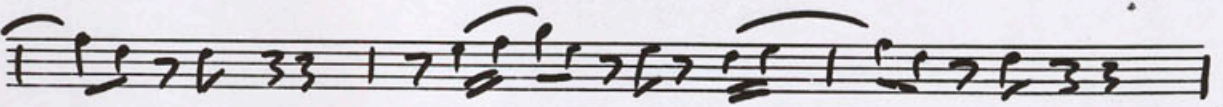
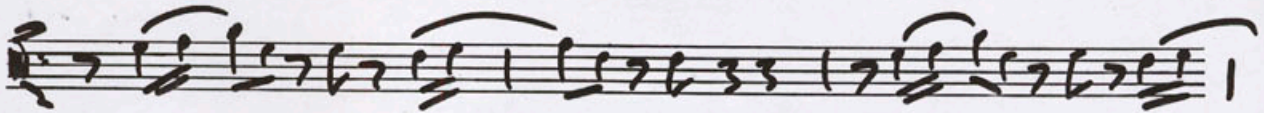
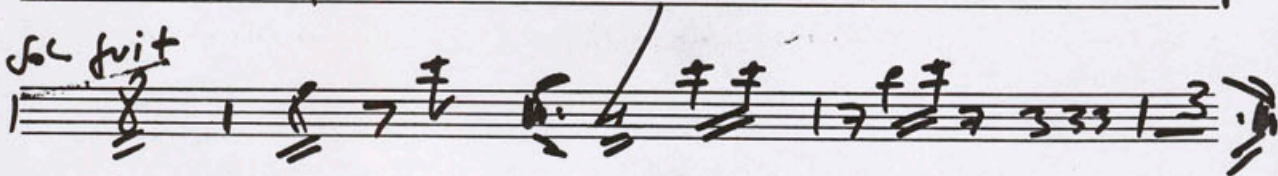


- ME CHAMA -

TENOR



de fait



T. 1. 4/4

