

I FLAUTA

O SAMBA DA MINHA TERRA

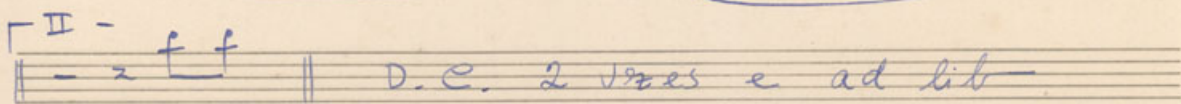
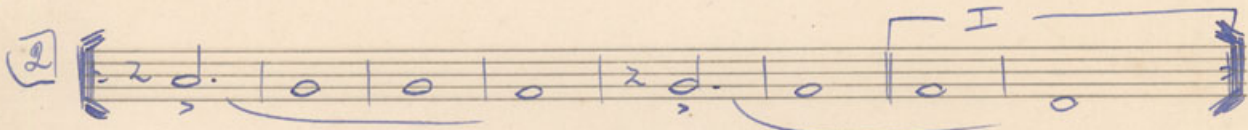
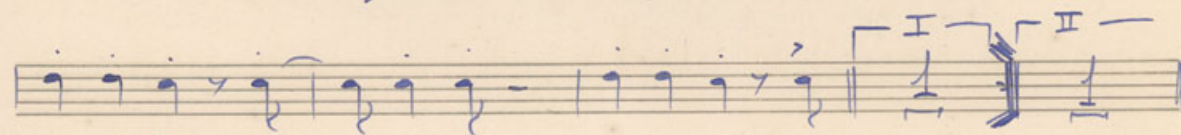
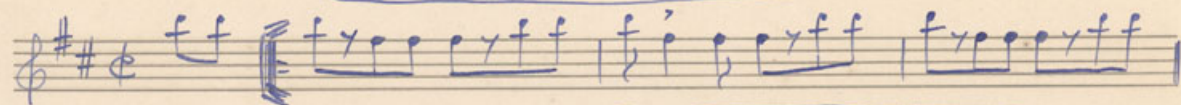
PARA ACABAR REPETE AD LIB

I e II VEZ NÃO TOCA

# O SAMBA DA MINHA TERRA

II Flauta

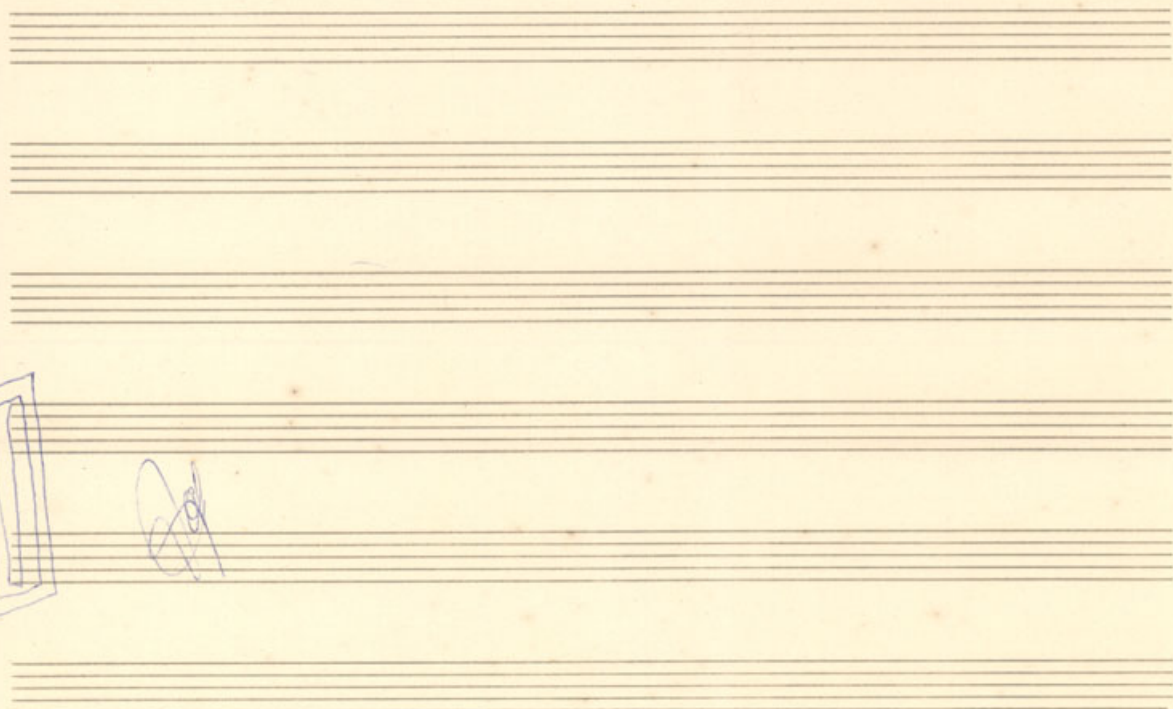
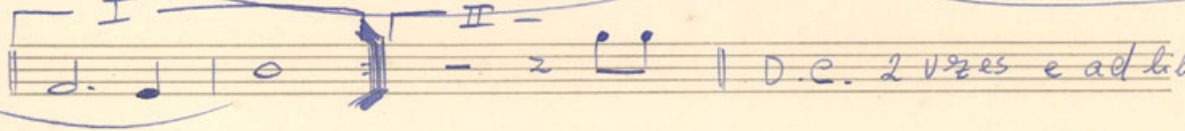
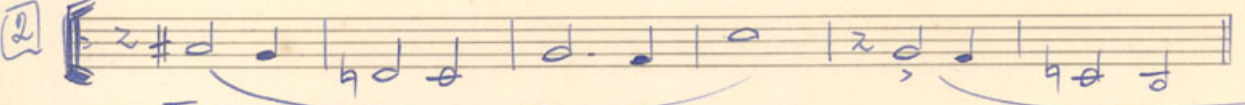
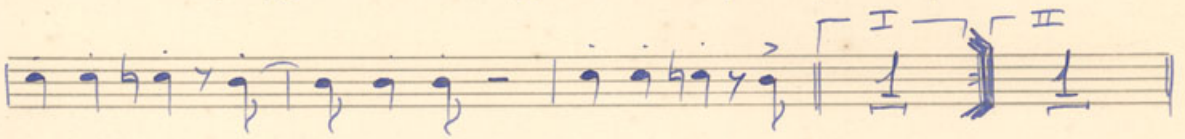
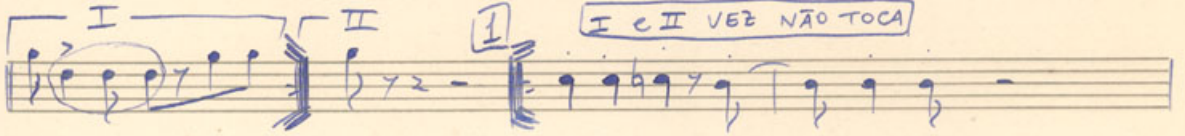
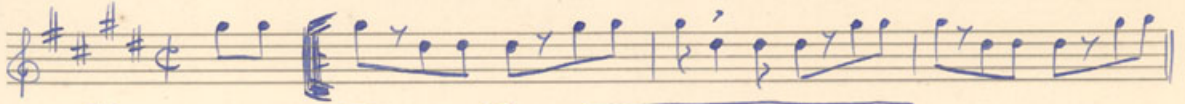
PARA ACABAR REPETE AD LIB



O SAMBA DA MINHA TERRA

I Clar.

PARA ACABAR REPETE AD LIB



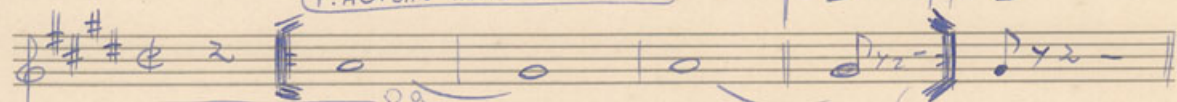
LA-5512-18  
FABRIL MÚSICA UFMG



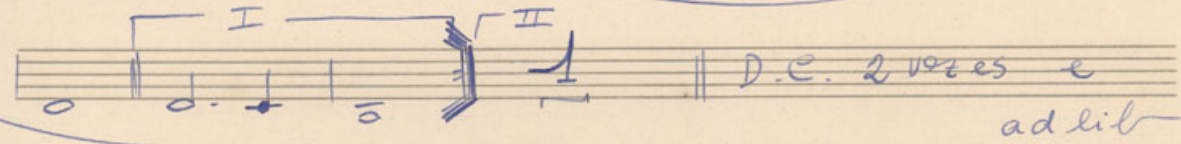
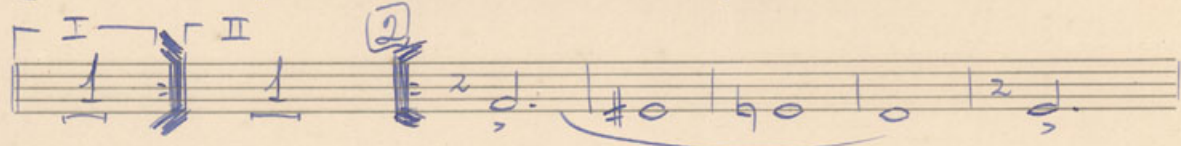
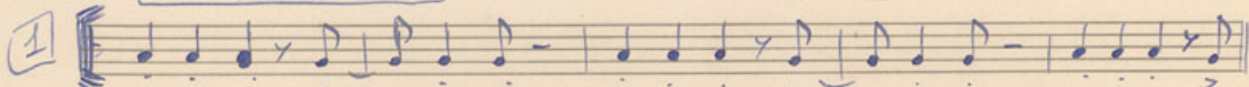
# O SAMBA DA MINHA TERRA

II Clar.

P. ACABAR REPETE AD LIB.



I e II VEZ NÃO TOCA



# O SAMBA DA MINHA TERRA

FAGOTE

P. ACABAR REPETE AD LIB

I. PR. VEZ NÃO TOCA

# O SAMBA DA MINHA TERRA

Guitakka

P. ACABAR REPETE AD LIB.

Musical notation for the first staff, showing a key signature of one sharp (F#) and a common time signature (C). The notes are: A9 (with a 6 below), D7+ (with a 6 below), A9 (with a 6 below), D7+ (with a 6 below), and P y z (with a 6 below). Brackets labeled I and II are above the notes.

Musical notation for the second staff, starting with a circled '1'. The notes are: Ew7, A9-, D7+, Bw7, Ew7, A9-, D7+, Bw7.

Musical notation for the third staff, starting with a circled '2'. The notes are: Ew7, A9-, D7+, Bw7, D7+, F#w7, B9-.

Musical notation for the fourth staff. The notes are: Ew7, A9, Ew7 (with a 5 below), A9-, D7+, Bw7.

Musical notation for the fifth staff. The notes are: D6, D. e. 2 VEZES e ad lib.

○ SAMBA DA MINHA TERRA

BAIXO

P. ACABAR REPETE AD LIB.

Musical notation on a staff with a treble clef, key signature of one sharp (F#), and 2/4 time signature. The first measure contains a whole rest. The subsequent notes are: quarter note F#4, quarter note G4, quarter note A4, quarter note B4, quarter note C5, quarter note B4, quarter note A4, quarter note G4, quarter note F#4. A bracket labeled 'I' spans the last four notes.

Musical notation on a staff. The first measure contains a whole rest. The second measure has a circled '1' above it. The notes are: quarter note F#4, quarter note G4, quarter note A4, quarter note B4, quarter note C5, quarter note B4, quarter note A4, quarter note G4, quarter note F#4.

Musical notation on a staff. The first measure has a bracket labeled 'I' above it. The second measure has a bracket labeled 'II' above it. The third measure has a circled '2' above it. The notes are: quarter note F#4, quarter note G4, quarter note A4, quarter note B4, quarter note C5, quarter note B4, quarter note A4, quarter note G4, quarter note F#4.

Musical notation on a staff. The first measure has a bracket labeled 'I' above it. The notes are: quarter note F#4, quarter note G4, quarter note A4, quarter note B4, quarter note C5, quarter note B4, quarter note A4, quarter note G4, quarter note F#4.

Musical notation on a staff. The first measure has a bracket labeled 'II' above it. The notes are: quarter note F#4, quarter note G4, quarter note A4, quarter note B4, quarter note C5, quarter note B4, quarter note A4, quarter note G4, quarter note F#4. The staff ends with the text "D.C. 2 vezes e ad lib".

SAMBA DA MINHA TERRA

BATERIA

P. ACABAR REPETE AD LIB.

Handwritten musical notation for the first staff, featuring a bass clef, a 2/4 time signature, and a key signature of one flat. The notation includes a measure with a fermata and the text "SAMBA AD LIB" above it, followed by two measures of rhythmic notation with first and second endings marked "I" and "II".

Handwritten musical notation for the second staff, starting with a circled "1" in a box. It includes the word "segue" above the first measure, a fermata, and rhythmic notation with first and second endings marked "I" and "II".

Handwritten musical notation for the third staff, starting with a circled "2" in a box. It includes a fermata, rhythmic notation with first and second endings marked "I" and "II", and concludes with the instruction "D.C. 2 VEZES e ad lib." written vertically.